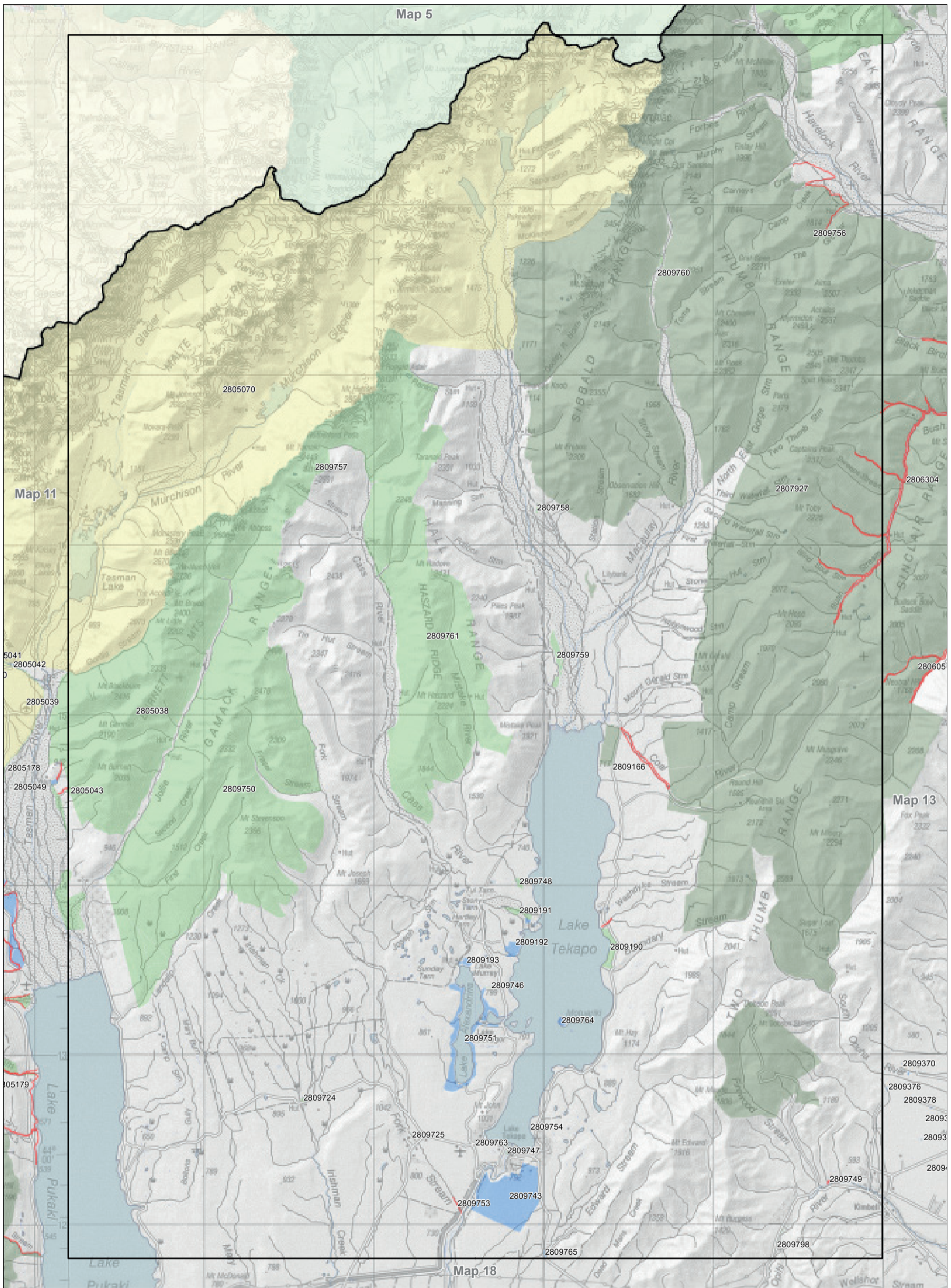


Inventory of public conservation land and waters  
 Canterbury  
 Map table 7.12

NaPALIS ID	Protected Area Name	Area (ha)	Legal Description
2805038	Mt Cook Station Conservation Area	8696.03	Stewardship Area - s.25 Conservation Act 1987
2805043	Mount Cook Station Marginal Strips	7.50	Moveable Marginal Strip - s.24(1) & (2) Conservation Act 1987
2805070	Aoraki Mount Cook National Park	72291.01	National Park - s.4 National Parks Act 1980
2807927	Te Kahui Kaupeka Conservation Park	93103.29	Conservation Park - s.19 Conservation Act 1987
2809166	Richmond Marginal Strips	21.68	Moveable Marginal Strip - s.24(1) & (2) Conservation Act 1987
2809190	Richmond Conservation Area	91.98	Stewardship Area - s.25 Conservation Act 1987
2809191	Cass River Delta Conservation Area	43.22	Stewardship Area - s.25 Conservation Act 1987
2809192	Cass River Delta Government Purpose Reserve Wildlife Management	52.34	Government Purpose Reserve - s.22 Reserves Act 1977
2809193	Lake Alexandrina Scenic Reserve	23.58	Scenic Reserve - s.19(1)(a) Reserves Act 1977
2809724	Conservation Area Irishman Creek	4.80	Stewardship Area - s.25 Conservation Act 1987
2809725	Conservation Area Tekapo Military Area	0.12	Stewardship Area - s.25 Conservation Act 1987
2809743	Lake Tekapo Scientific Reserve	1010.33	Scientific Reserve - s.21 Reserves Act 1977
2809746	Conservation Area Lake Alexandrina	2.45	Stewardship Area - s.25 Conservation Act 1987
2809747	Conservation Area Tekapo Township	1.49	Stewardship Area - s.25 Conservation Act 1987
2809748	Micks Lagoon Conservation Area	19.31	Stewardship Area - s.25 Conservation Act 1987
2809749	Silverstream Marginal Strip	2.12	Fixed Marginal Strip - s.24(3) Conservation Act 1987
2809750	Braemar Conservation Area	16125.03	Stewardship Area - s.25 Conservation Act 1987
2809751	Scenic Reserve Lake Alexandrina	339.73	Scenic Reserve - s.19(1)(a) Reserves Act 1977
2809753	Fork Stream Marginal Strip	2.56	Fixed Marginal Strip - s.24(3) Conservation Act 1987
2809754	Lake Tekapo Plantation Reserve	0.60	Local Purpose Reserve - s.23 Reserves Act 1977
2809756	Havelock River Marginal Strip	19.89	Moveable Marginal Strip - s.24(1) & (2) Conservation Act 1987
2809757	Liebig Range/Upper Jollie/ Cass Conservation Area	5802.55	Stewardship Area - s.25 Conservation Act 1987
2809758	Sibbalds Island Conservation Area	5.09	Stewardship Area - s.25 Conservation Act 1987
2809759	Godley Riverbed Conservation Area	95.76	Stewardship Area - s.25 Conservation Act 1987
2809760	Godley Macaulay Conservation Area	16.31	Stewardship Area - s.25 Conservation Act 1987
2809761	Godley Peaks Conservation Area	9126.93	Stewardship Area - s.25 Conservation Act 1987
2809763	Conservation Area Lake Tekapo	0.76	Stewardship Area - s.25 Conservation Act 1987
2809764	Motuariki Island Recreation Reserve	17.70	Recreation Reserve - s.17 Reserves Act 1977
2809765	Local Purpose Reserve Public Utility Sawdon	2.76	Local Purpose Reserve - s.23 Reserves Act 1977
2809798	Conservation Area Airies	2.28	Stewardship Area - s.25 Conservation Act 1987

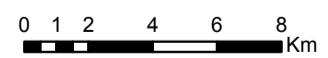


Map 7.12 Inventory of public conservation land and waters

Conservation Management Strategy  
Canterbury (Waitaha)

**Map 12 of 23**

Conservation unit data is current as of 31/10/2015







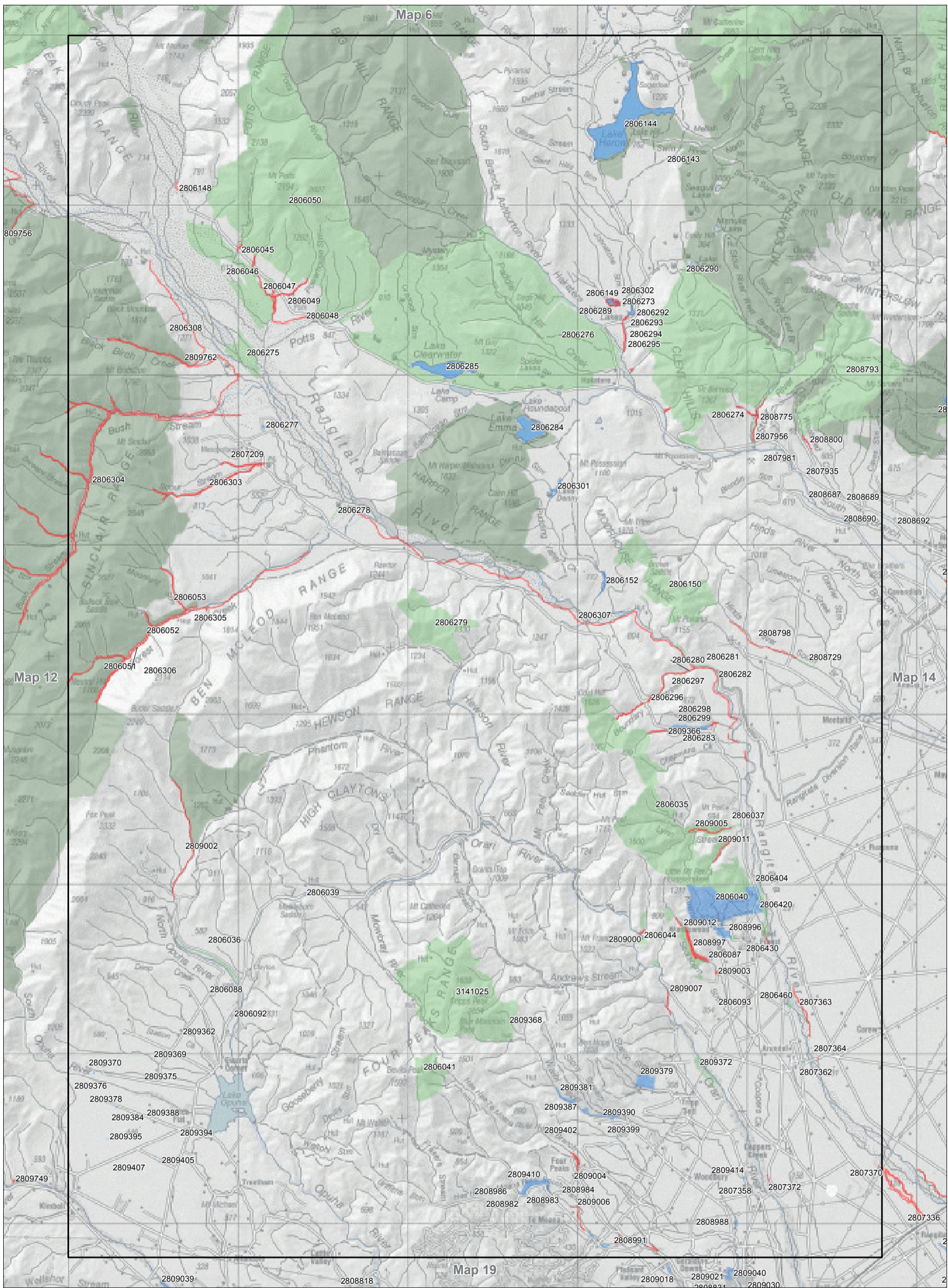
**Inventory of public conservation land and waters  
Canterbury  
Map table 7.13**

NaPALIS ID	Protected Area Name	Area (ha)	Legal Description
2806035	Mt Peel/Waikari Hills Conservation Area	3279.94	Stewardship Area - s.25 Conservation Act 1987
2806036	Conservation Area North Opuha Riverbed	60.24	Stewardship Area - s.25 Conservation Act 1987
2806037	Conservation Area Lynn Stream	5.03	Stewardship Area - s.25 Conservation Act 1987
2806039	Gravel Reserve Lochaber Road	2.00	Local Purpose Reserve - s.23 Reserves Act 1977
2806040	Peel Forest Park Scenic Reserve	747.37	Scenic Reserve - s.19(1)(a) Reserves Act 1977
2806041	Four Peaks Range Conservation Area Tops	372.40	Stewardship Area - s.25 Conservation Act 1987
2806044	The Gorge Conservation Area	200.30	Stewardship Area - s.25 Conservation Act 1987
2806045	Rangitata River Tributary Marginal Strip	2.05	Fixed Marginal Strip - s.24(3) Conservation Act 1987
2806046	Rangitata River Tributary Marginal Strip	2.97	Fixed Marginal Strip - s.24(3) Conservation Act 1987
2806047	Rangitata River Marginal Strip	6.20	Fixed Marginal Strip - s.24(3) Conservation Act 1987
2806048	Potts River Marginal Strip	1.81	Fixed Marginal Strip - s.24(3) Conservation Act 1987
2806049	Powerhouse Stream Marginal Strip	25.87	Fixed Marginal Strip - s.24(3) Conservation Act 1987
2806050	Mt Potts Conservation Area	9221.42	Stewardship Area - s.25 Conservation Act 1987
2806051	Neutral Creek Marginal Strip	22.29	Fixed Marginal Strip - s.24(3) Conservation Act 1987
2806052	Marginal Strip	6.21	Fixed Marginal Strip - s.24(3) Conservation Act 1987
2806053	Moonlight Stream Marginal Strip	21.19	Fixed Marginal Strip - s.24(3) Conservation Act 1987
2806087	Gravel Reserve Kowhai	1.55	Local Purpose Reserve - s.23 Reserves Act 1977
2806088	Gravel Reserve Plantation Road	0.48	Local Purpose Reserve - s.23 Reserves Act 1977
2806092	Gravel Reserve Clayton Road	2.11	Local Purpose Reserve - s.23 Reserves Act 1977
2806093	Conservation Area Downsend	0.51	Stewardship Area - s.25 Conservation Act 1987
2806143	Hakaterere Conservation Park	59627.14	Conservation Park - s.19 Conservation Act 1987
2806144	Lake Heron Nature Reserve	695.96	Nature Reserve - s.20 Reserves Act 1977
2806148	Clyde River Marginal Strip	1.24	Fixed Marginal Strip - s.24(3) Conservation Act 1987
2806149	Maori Lakes Marginal Strip	6.60	Fixed Marginal Strip - s.24(3) Conservation Act 1987
2806150	Tenehaun Conservation Area	1136.61	Stewardship Area - s.25 Conservation Act 1987
2806152	Tenehaun Scenic Reserve	23.68	Scenic Reserve - s.19(1)(a) Reserves Act 1977
2806273	Maori Lakes Nature Reserve	30.81	Nature Reserve - s.20 Reserves Act 1977
2806274	Barrosa Marginal Strips	7.42	Moveable Marginal Strip - s.24(1) & (2) Conservation Act 1987
2806275	Conservation Area Upper Rangitata Riverbed	258.46	Stewardship Area - s.25 Conservation Act 1987
2806276	Hakaterere Conservation Area	14303.79	Stewardship Area - s.25 Conservation Act 1987
2806277	Dr Sinclairs Grave Reserve	4.05	Local Purpose Reserve - s.23 Reserves Act 1977
2806278	Conservation Area Forest Creek Margin	11.99	Stewardship Area - s.25 Conservation Act 1987
2806279	Rata Peaks Conservation Area	854.16	Stewardship Area - s.25 Conservation Act 1987
2806280	Conservation Area Boundary Stream	1.12	Stewardship Area - s.25 Conservation Act 1987
2806281	Conservation Area Rangitata Gorge	0.69	Stewardship Area - s.25 Conservation Act 1987
2806282	Conservation Area Rangitata Gorge	2.29	Stewardship Area - s.25 Conservation Act 1987
2806283	Raules Gully Scenic Reserve	59.36	Scenic Reserve - s.19(1)(a) Reserves Act 1977
2806284	Lake Emma Government Purpose Reserve	154.80	Government Purpose Reserve - s.22 Reserves Act 1977
2806285	Lake Clearwater Government Purpose Reserve	205.80	Government Purpose Reserve - s.22 Reserves Act 1977
2806289	Conservation Area Maori Lakes	2.12	Stewardship Area - s.25 Conservation Act 1987
2806290	Conservation Area Lake Emily	0.71	Stewardship Area - s.25 Conservation Act 1987
2806292	Maori Lakes Marginal Strip	0.95	Fixed Marginal Strip - s.24(3) Conservation Act 1987
2806293	Maori Lakes Marginal Strip	0.89	Fixed Marginal Strip - s.24(3) Conservation Act 1987
2806294	Ashburton River Marginal Strip	4.02	Fixed Marginal Strip - s.24(3) Conservation Act 1987
2806295	Ashburton River Marginal Strip	4.11	Fixed Marginal Strip - s.24(3) Conservation Act 1987
2806296	Boundary Stream Marginal Strip	0.60	Fixed Marginal Strip - s.24(3) Conservation Act 1987
2806297	Boundary Stream Marginal Strip	9.47	Fixed Marginal Strip - s.24(3) Conservation Act 1987
2806298	Raules Gully Marginal Strip	1.06	Fixed Marginal Strip - s.24(3) Conservation Act 1987
2806299	Raules Gully Marginal Strip	0.71	Fixed Marginal Strip - s.24(3) Conservation Act 1987
2806301	Lake Denny Scenic Reserve	23.09	Scenic Reserve - s.19(1)(a) Reserves Act 1977
2806302	Gentleman Smith Stream Esplanade Strip	0.25	Local Purpose Reserve - s.23 Reserves Act 1977
2806303	Scour Stream Marginal Strip	32.65	Fixed Marginal Strip - s.24(3) Conservation Act 1987
2806304	Bush Stream Marginal Strip	154.67	Fixed Marginal Strip - s.24(3) Conservation Act 1987
2806305	Forest Creek Marginal Strip	35.19	Fixed Marginal Strip - s.24(3) Conservation Act 1987
2806306	Forest Creek Marginal Strip	20.59	Fixed Marginal Strip - s.24(3) Conservation Act 1987
2806307	Rangitata River Marginal Strip	64.76	Fixed Marginal Strip - s.24(3) Conservation Act 1987
2806308	Rangitata River Marginal Strip	26.93	Fixed Marginal Strip - s.24(3) Conservation Act 1987
2806404	Conservation Area Rangitata Riverbed Cain Flat	7.48	Stewardship Area - s.25 Conservation Act 1987
2806420	Conservation Area Rangitata Riverbed Clarke Flat	66.91	Stewardship Area - s.25 Conservation Act 1987
2806430	Conservation Area Houhere	0.11	Stewardship Area - s.25 Conservation Act 1987
2806460	Conservation Area Rangitata Riverbed Peel View	7.63	Stewardship Area - s.25 Conservation Act 1987
2807209	Marginal Strip	8.84	Fixed Marginal Strip - s.24(3) Conservation Act 1987
2807358	Conservation Area Orari Riverbed Orari Bridge	1.88	Stewardship Area - s.25 Conservation Act 1987
2807362	Conservation Area Arunadel	6.05	Stewardship Area - s.25 Conservation Act 1987
2807363	Rangitata River Marginal Strip	6.97	Fixed Marginal Strip - s.24(3) Conservation Act 1987
2807364	Arunadel Marginal Strip	0.37	Fixed Marginal Strip - s.24(3) Conservation Act 1987
2807370	Rangitata River Marginal Strip	29.13	Moveable Marginal Strip - s.24(1) & (2) Conservation Act 1987
2807372	Orari River Marginal Strip	0.44	Fixed Marginal Strip - s.24(3) Conservation Act 1987
2807935	Local Purpose Reserve Ashburton Gorge Road	0.21	Local Purpose Reserve - s.23 Reserves Act 1977
2807956	Conservation Area Stour river	7.84	Stewardship Area - s.25 Conservation Act 1987
2807981	Conservation Area Barrosa	2.94	Stewardship Area - s.25 Conservation Act 1987
2808687	Local Purpose Reserve Public Utility Ashburton Gor	0.21	Local Purpose Reserve - s.23 Reserves Act 1977
2808689	Local Purpose Reserve Public Utility Ashburton Gor	0.20	Local Purpose Reserve - s.23 Reserves Act 1977
2808690	Local Purpose Reserve Public Utility Ashburton Gor	0.20	Local Purpose Reserve - s.23 Reserves Act 1977
2808729	Conservation Area South Branch Hinds Riverbed	15.97	Stewardship Area - s.25 Conservation Act 1987
2808775	Stour River Marginal Strip	7.70	Fixed Marginal Strip - s.24(3) Conservation Act 1987
2808793	Mount Somers Conservation Area	2840.67	Stewardship Area - s.25 Conservation Act 1987
2808798	South Branch Hinds River Marginal Strip	2.36	Fixed Marginal Strip - s.24(3) Conservation Act 1987
2808800	Woolshed Creek Marginal Strip	1.97	Fixed Marginal Strip - s.24(3) Conservation Act 1987
2808982	Conservation Area Hae Hae Te Moana River South Branch	0.24	Stewardship Area - s.25 Conservation Act 1987
2808983	Conservation Area Hae Hae Te Moana River South Branch	1.42	Stewardship Area - s.25 Conservation Act 1987
2808984	Gravel Reserve Sheep Dip Road	0.40	Local Purpose Reserve - s.23 Reserves Act 1977
2808986	Conservation Area Hae Hae Te Moana River South Branch	1.40	Stewardship Area - s.25 Conservation Act 1987
2808988	Waihi River Conservation Reserve	6.76	Local Purpose Reserve - s.23 Reserves Act 1977
2808991	South Hae Hae Te Moana River Conservation Reserve	21.34	Local Purpose Reserve - s.23 Reserves Act 1977
2808996	Conservation Area Denniston Bush	7.28	Stewardship Area - s.25 Conservation Act 1987
2808997	Blandswood Marginal Strip	35.54	Fixed Marginal Strip - s.24(3) Conservation Act 1987
2809000	The Gorge Marginal Strip	1.85	Moveable Marginal Strip - s.24(1) & (2) Conservation Act 1987
2809002	North Opuha River Marginal Strip	16.64	Fixed Marginal Strip - s.24(3) Conservation Act 1987
2809003	Scotsburn Stream Marginal Strip	1.14	Fixed Marginal Strip - s.24(3) Conservation Act 1987
2809004	Hae Hae Te Moana River North Branch Marginal Strip	4.44	Moveable Marginal Strip - s.24(1) & (2) Conservation Act 1987
2809005	Lynn Stream Marginal Strip	6.30	Moveable Marginal Strip - s.24(1) & (2) Conservation Act 1987
2809006	Hae Hae Te Moana South Branch Marginal Strip	8.53	Moveable Marginal Strip - s.24(1) & (2) Conservation Act 1987
2809007	Orari River Marginal Strip	2.99	Moveable Marginal Strip - s.24(1) & (2) Conservation Act 1987
2809011	Horse Spur River Marginal Strip	4.51	Fixed Marginal Strip - s.24(3) Conservation Act 1987
2809012	Scotsburn Stream Marginal Strip	1.30	Moveable Marginal Strip - s.24(1) & (2) Conservation Act 1987
2809362	Gravel Reserve Plantation Road	0.48	Local Purpose Reserve - s.23 Reserves Act 1977

Inventory of public conservation land and waters  
 Canterbury  
 Map table 7.13

NaPALIS ID	Protected Area Name	Area (ha)	Legal Description
2809366	Mt Peel/Waikari Hills Marginal Strip	12.94	Moveable Marginal Strip - s.24(1) & (2) Conservation Act 1987
2809368	Conservation Area Waihi River	2.61	Stewardship Area - s.25 Conservation Act 1987
2809369	Gravel Reserve Plantation Road	0.43	Local Purpose Reserve - s.23 Reserves Act 1977
2809370	Gravel Reserve Morris Road	2.13	Local Purpose Reserve - s.23 Reserves Act 1977
2809372	Conservation Area Orari Riverbed	55.47	Stewardship Area - s.25 Conservation Act 1987
2809375	Gravel Reserve Morris Road	0.41	Local Purpose Reserve - s.23 Reserves Act 1977
2809376	Gravel Reserve Ashwick Flat Road	0.92	Local Purpose Reserve - s.23 Reserves Act 1977
2809378	Gravel Reserve Ashwick Flat Road	0.84	Local Purpose Reserve - s.23 Reserves Act 1977
2809379	Orari Gorge Scenic Reserve	80.59	Scenic Reserve - s.19(1)(a) Reserves Act 1977
2809381	Waihi Gorge Scenic Reserve	23.33	Scenic Reserve - s.19(1)(a) Reserves Act 1977
2809384	Gravel Reserve Ashwick Flat Road	0.83	Local Purpose Reserve - s.23 Reserves Act 1977
2809387	Waihi Gorge Scenic Reserve	0.29	Scenic Reserve - s.19(1)(a) Reserves Act 1977
2809388	Gravel Reserve Ashwick Flat Road	0.85	Local Purpose Reserve - s.23 Reserves Act 1977
2809390	Waihi Gorge Scenic Reserve	36.99	Scenic Reserve - s.19(1)(a) Reserves Act 1977
2809394	Gravel Reserve Clayton Road	0.95	Local Purpose Reserve - s.23 Reserves Act 1977
2809395	Gravel Reserve Perrys Road	0.83	Local Purpose Reserve - s.23 Reserves Act 1977
2809399	Waihi Gorge Scenic Reserve	2.40	Scenic Reserve - s.19(1)(a) Reserves Act 1977
2809402	Gravel Reserve Scott Road	0.40	Local Purpose Reserve - s.23 Reserves Act 1977
2809405	Gravel Reserve Perrys Road	0.83	Local Purpose Reserve - s.23 Reserves Act 1977
2809407	Gravel Reserve Ashwick	0.96	Local Purpose Reserve - s.23 Reserves Act 1977
2809410	Hae Hae Te Moana Scenic Reserve	76.04	Scenic Reserve - s.19(1)(a) Reserves Act 1977
2809414	Gravel Reserve Tripp Settlement Road	2.09	Local Purpose Reserve - s.23 Reserves Act 1977
2809762	Mesopotamia Marginal Strip	21.69	Fixed Marginal Strip - s.24(3) Conservation Act 1987
3141025	Conservation Area - Blue Mountain - Tenure Review	2744.12	Stewardship Area - s.25 Conservation Act 1987



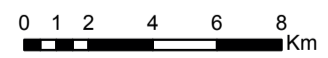


Map 7.13 Inventory of public conservation land and waters

Conservation Management Strategy  
Canterbury (Waitaha)

**Map 13 of 23**

Conservation unit data is current as of 31/10/2015





**Inventory of public conservation land and waters  
Canterbury  
Map table 7.14**

NaPALIS ID	Protected Area Name	Area (ha)	Legal Description
2799309	Rakaia River Marginal Strip	5.16	Moveable Marginal Strip - s.24(1) & (2) Conservation Act 1987
2799311	Rakaia River Marginal Strip	10.09	Moveable Marginal Strip - s.24(1) & (2) Conservation Act 1987
2799324	Local Purpose Reserve Public Utility Glentunnel	2.73	Local Purpose Reserve - s.23 Reserves Act 1977
2799336	Conservation Area Glentunnel	0.33	Stewardship Area - s.25 Conservation Act 1987
2799351	Conservation Area Hororata Riverbed	15.37	Stewardship Area - s.25 Conservation Act 1987
2799354	Cotons Cob Cottage Historic	0.11	Historic Reserve - s.18 Reserves Act 1977
2806354	Local Purpose Reserve Public Utility Barford Road	4.04	Local Purpose Reserve - s.23 Reserves Act 1977
2806434	Local Purpose Reserve Public Utility Ferrimans Roa	2.06	Local Purpose Reserve - s.23 Reserves Act 1977
2806438	Local Purpose Reserve Public Utility Moronan Road	0.81	Local Purpose Reserve - s.23 Reserves Act 1977
2806468	Local Purpose Reserve Utility Hendersons Road	1.48	Local Purpose Reserve - s.23 Reserves Act 1977
2806480	Municipal Reserve Ashburton	0.20	Local Purpose Reserve - s.23 Reserves Act 1977
2807167	Conservation Area Glendore Stream Steventon	0.04	Stewardship Area - s.25 Conservation Act 1987
2807169	Hoods Bush Scenic Reserve	6.27	Scenic Reserve - s.19(1)(a) Reserves Act 1977
2807237	Conservation Area Ashburton River Holmwood	0.26	Stewardship Area - s.25 Conservation Act 1987
2807266	Local Purpose Reserve Public Utility Winslow Road	0.40	Local Purpose Reserve - s.23 Reserves Act 1977
2807289	Local Purpose Reserve Public Utility Annetts Road	0.99	Local Purpose Reserve - s.23 Reserves Act 1977
2807292	Local Purpose Reserve Public Utility Arundel Road	1.03	Local Purpose Reserve - s.23 Reserves Act 1977
2807335	Rangitata River Conservation Reserve	150.02	Local Purpose Reserve - s.23 Reserves Act 1977
2807336	Local Purpose Reserve Public Buildings Rangitata	0.52	Government Purpose Reserve - s.22 Reserves Act 1977
2807342	Rangitata River Conservation Reserve	15.76	Local Purpose Reserve - s.23 Reserves Act 1977
2807350	Conservation Area Hinds Riverbed Riverdale	0.50	Stewardship Area - s.25 Conservation Act 1987
2807359	Conservation Area Pacific Shore Waterton	0.20	Stewardship Area - s.25 Conservation Act 1987
2807365	Rangitata River Marginal Strip	13.14	Fixed Marginal Strip - s.24(3) Conservation Act 1987
2807366	North Branch Ashburton River Marginal Strip	0.87	Fixed Marginal Strip - s.24(3) Conservation Act 1987
2807367	North Branch Ashburton River Marginal Strip	4.48	Fixed Marginal Strip - s.24(3) Conservation Act 1987
2807368	North Branch Ashburton River Marginal Strip	2.14	Fixed Marginal Strip - s.24(3) Conservation Act 1987
2807369	South Branch Ashburton River Marginal Strip	2.13	Moveable Marginal Strip - s.24(1) & (2) Conservation Act 1987
2807371	Hinds River Marginal Strip	1.76	Moveable Marginal Strip - s.24(1) & (2) Conservation Act 1987
2807643	South Malvern Marginal Strip	0.85	Fixed Marginal Strip - s.24(3) Conservation Act 1987
2807644	Hororata Marginal Strip	0.10	Fixed Marginal Strip - s.24(3) Conservation Act 1987
2807649	Selwyn River Marginal Strip	7.77	Moveable Marginal Strip - s.24(1) & (2) Conservation Act 1987
2807668	Selwyn River Marginal Strip	1.28	Moveable Marginal Strip - s.24(1) & (2) Conservation Act 1987
2807669	Hororata River Marginal strip	1.55	Moveable Marginal Strip - s.24(1) & (2) Conservation Act 1987
2807671	Selwyn River Marginal Strip	0.05	Moveable Marginal Strip - s.24(1) & (2) Conservation Act 1987
2807676	Hororata River Marginal Strip	1.00	Moveable Marginal Strip - s.24(1) & (2) Conservation Act 1987
2807936	Stavaley Lime Kilns Conservation Area	36.63	Stewardship Area - s.25 Conservation Act 1987
2807937	Sharplin Falls Scenic Reserve	247.14	Scenic Reserve - s.19(1)(a) Reserves Act 1977
2807967	Pudding Hill Scenic Reserve	35.72	Scenic Reserve - s.19(1)(a) Reserves Act 1977
2807970	Conservation Area North Branch Ashburton River	1.26	Stewardship Area - s.25 Conservation Act 1987
2807973	Alford Scenic Reserve	33.06	Scenic Reserve - s.19(1)(a) Reserves Act 1977
2807976	Mt Alford Scenic Reserve	120.45	Scenic Reserve - s.19(1)(a) Reserves Act 1977
2807979	Marginal Strips - Mt Alford	6.08	Moveable Marginal Strip - s.24(1) & (2) Conservation Act 1987
2808031	Conservation Area Ashburton Riverbed Shannon	3.24	Stewardship Area - s.25 Conservation Act 1987
2808033	Conservation Area Ashburton Riverbed Shannon	22.39	Stewardship Area - s.25 Conservation Act 1987
2808042	Conservation Area Ashburton Riverbed Terrace Dale	10.02	Stewardship Area - s.25 Conservation Act 1987
2808043	Ashburton River Conservation Reserve	21.30	Local Purpose Reserve - s.23 Reserves Act 1977
2808048	Kongutu Recreation Reserve	1.40	Recreation Reserve - s.17 Reserves Act 1977
2808049	Local Purpose Reserve Esplanade Kongutu	0.53	Local Purpose Reserve - s.23 Reserves Act 1977
2808062	Ashburton River Marginal Strip	22.21	Fixed Marginal Strip - s.24(3) Conservation Act 1987
2808068	Ashburton Mouth Esplanade Reserve	0.26	Local Purpose Reserve - s.23 Reserves Act 1977
2808074	Ashburton River Marginal Strip	4.42	Moveable Marginal Strip - s.24(1) & (2) Conservation Act 1987
2808082	Conservation Area Milnes Road Railway	1.70	Stewardship Area - s.25 Conservation Act 1987
2808083	Conservation Area Milnes Road Railway	0.94	Stewardship Area - s.25 Conservation Act 1987
2808109	Conservation Area Rakaia Riverbed Peterhead	21.49	Stewardship Area - s.25 Conservation Act 1987
2808126	Conservation Area Rakaia Riverbed Karambi	67.00	Stewardship Area - s.25 Conservation Act 1987
2808149	Local Purpose Reserve Public Utility Back Track	0.40	Local Purpose Reserve - s.23 Reserves Act 1977
2808150	Local Purpose Reserve Public Utility Back Track	0.40	Local Purpose Reserve - s.23 Reserves Act 1977
2808151	Conservation Area Rakaia Riverbed Corwar	3.47	Stewardship Area - s.25 Conservation Act 1987
2808154	Conservation Area Rakaia Riverbed Balrazie	40.29	Stewardship Area - s.25 Conservation Act 1987
2808163	Conservation Area Ranui	0.13	Stewardship Area - s.25 Conservation Act 1987
2808164	Conservation Area Sherwood	2.43	Stewardship Area - s.25 Conservation Act 1987
2808167	Local Purpose Reserve Public Utility Methven Chert	0.41	Local Purpose Reserve - s.23 Reserves Act 1977
2808169	Local Purpose Reserve Public Utility Cloverlea	0.40	Local Purpose Reserve - s.23 Reserves Act 1977
2808616	Conservation Area Cleardale	0.20	Stewardship Area - s.25 Conservation Act 1987
2808617	Conservation Area Rakaia River Margin Blackford	15.13	Stewardship Area - s.25 Conservation Act 1987
2808619	Gravel Reserve Snowdon	0.40	Local Purpose Reserve - s.23 Reserves Act 1977
2808621	Conservation Area High Peak	4.68	Stewardship Area - s.25 Conservation Act 1987
2808622	Gravel Reserve Coleridge Road	2.17	Local Purpose Reserve - s.23 Reserves Act 1977
2808624	Rockwood Conservation Area	222.02	Stewardship Area - s.25 Conservation Act 1987
2808630	Mount Hutt Conservation Area	7579.71	Stewardship Area - s.25 Conservation Act 1987
2808632	Swift River Marginal Strip	68.92	Fixed Marginal Strip - s.24(3) Conservation Act 1987
2808646	High Peak Road Marginal Strip	0.88	Fixed Marginal Strip - s.24(3) Conservation Act 1987
2808647	High Peak Road Marginal Strip	0.95	Fixed Marginal Strip - s.24(3) Conservation Act 1987
2808648	High Peak Road Marginal Strip	0.53	Fixed Marginal Strip - s.24(3) Conservation Act 1987
2808649	High Peak Road Marginal Strip	0.40	Fixed Marginal Strip - s.24(3) Conservation Act 1987
2808650	Rakaia River Marginal Strip	4.13	Fixed Marginal Strip - s.24(3) Conservation Act 1987
2808651	Rakaia River Marginal Strip	6.79	Fixed Marginal Strip - s.24(3) Conservation Act 1987
2808652	Rakaia River Marginal Strip	2.84	Fixed Marginal Strip - s.24(3) Conservation Act 1987
2808665	Mount Hutt Forest Conservation Area	7.03	Stewardship Area - s.25 Conservation Act 1987
2808692	Local Purpose Reserve Public Utility Ashburton Gor	0.20	Local Purpose Reserve - s.23 Reserves Act 1977
2808699	Local Purpose Reserve Public Utility Tramway Road	0.41	Local Purpose Reserve - s.23 Reserves Act 1977
2808709	Conservation Area Roxburgh	0.31	Stewardship Area - s.25 Conservation Act 1987
2808711	Conservation Area Clearview	0.40	Stewardship Area - s.25 Conservation Act 1987
2808720	Local Purpose Reserve Public Utility Thompsons Tra	2.02	Local Purpose Reserve - s.23 Reserves Act 1977
2808723	Local Purpose Reserve Public Utility Thompsons Tra	2.02	Local Purpose Reserve - s.23 Reserves Act 1977
2808725	Conservation Area Urrall	2.38	Stewardship Area - s.25 Conservation Act 1987
2808738	Conservation Area South Branch Ashburton River Valetta	4.17	Stewardship Area - s.25 Conservation Act 1987
2808751	Marginal Strip - Kensington	5.20	Moveable Marginal Strip - s.24(1) & (2) Conservation Act 1987
2808772	Taylor's Stream Marginal Strip	0.26	Fixed Marginal Strip - s.24(3) Conservation Act 1987
2808773	Bowyers Stream Marginal Strip	6.02	Fixed Marginal Strip - s.24(3) Conservation Act 1987
2808774	Bowyers Stream Marginal Strip	5.62	Fixed Marginal Strip - s.24(3) Conservation Act 1987
2808776	Pudding Hill Stream Marginal Strip	3.22	Fixed Marginal Strip - s.24(3) Conservation Act 1987
2808777	Bowyers Stream Marginal Strip	0.96	Fixed Marginal Strip - s.24(3) Conservation Act 1987
2808778	Bowyers Stream Marginal Strip	1.14	Fixed Marginal Strip - s.24(3) Conservation Act 1987
2808779	Bowyers Stream Marginal Strip	1.18	Fixed Marginal Strip - s.24(3) Conservation Act 1987
2808780	Buccleuch Marginal Strip	5.06	Fixed Marginal Strip - s.24(3) Conservation Act 1987
2808781	South Branch Ashburton River Marginal Strip	0.76	Fixed Marginal Strip - s.24(3) Conservation Act 1987



Inventory of public conservation land and waters  
 Canterbury  
 Map table 7.14

NaPALIS ID	Protected Area Name	Area (ha)	Legal Description
2808782	South Branch Ashburton River Marginal Strip	6.33	Fixed Marginal Strip - s.24(3) Conservation Act 1987
2808783	Ashburton River Marginal Strip	9.90	Fixed Marginal Strip - s.24(3) Conservation Act 1987
2808784	South Branch Ashburton River Marginal Strip	1.60	Fixed Marginal Strip - s.24(3) Conservation Act 1987
2808785	South Branch Ashburton River Marginal Strip	1.90	Fixed Marginal Strip - s.24(3) Conservation Act 1987
2808786	South Branch Ashburton River Marginal Strip	6.66	Fixed Marginal Strip - s.24(3) Conservation Act 1987
2808787	South Branch Ashburton River Marginal Strip	0.66	Fixed Marginal Strip - s.24(3) Conservation Act 1987
2808788	South Branch Ashburton River Marginal Strip	0.86	Fixed Marginal Strip - s.24(3) Conservation Act 1987
2808789	North Branch Ashburton River Marginal Strip	2.99	Fixed Marginal Strip - s.24(3) Conservation Act 1987
2808790	North Branch Ashburton River Marginal Strip	4.19	Fixed Marginal Strip - s.24(3) Conservation Act 1987
2808791	South Branch Ashburton River Marginal Strip	0.75	Moveable Marginal Strip - s.24(1) & (2) Conservation Act 1987
2808794	North Branch Ashburton River Marginal strip	4.90	Moveable Marginal Strip - s.24(1) & (2) Conservation Act 1987
2808797	South Branch Ashburton River Marginal Strip	6.97	Moveable Marginal Strip - s.24(1) & (2) Conservation Act 1987

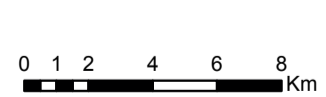


Map 7.14 Inventory of public conservation land and waters

Conservation Management Strategy  
 Canterbury (Waitaha)

**Map 14 of 23**

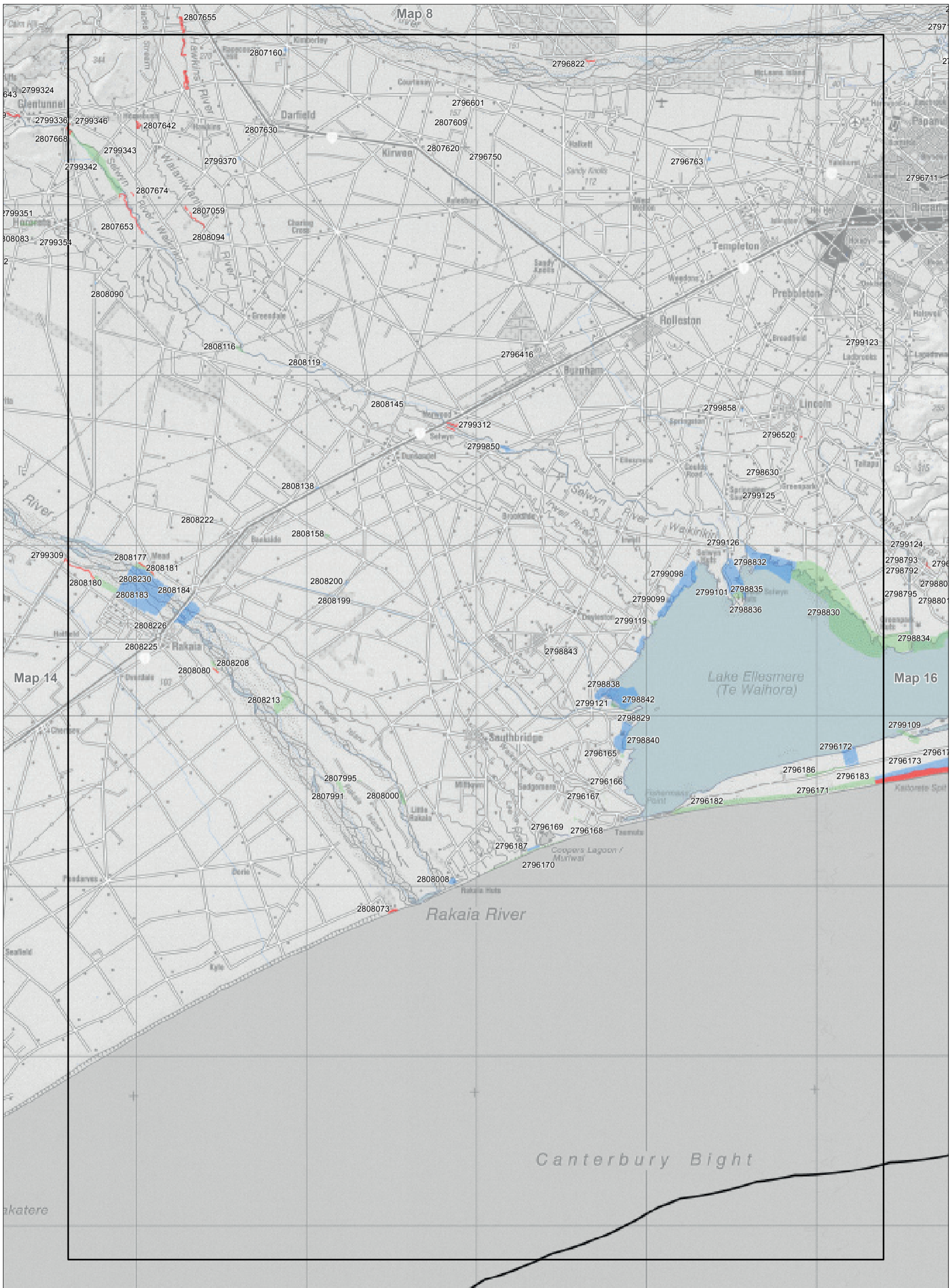
Conservation unit data is current as of 31/10/2015



Inventory of public conservation land and waters  
 Canterbury  
 Map table 7.15

NaPALIS ID	Protected Area Name	Area (ha)	Legal Description
2796165	Conservation Area Lakeside	4.02	Stewardship Area - s.25 Conservation Act 1987
2796166	Conservation Area Waikawai Creek Taumutu	0.23	Stewardship Area - s.25 Conservation Act 1987
2796167	Conservation Area Waikawai Creek Taumutu	2.30	Stewardship Area - s.25 Conservation Act 1987
2796168	Conservation Area Coopers Lagoon	3.71	Stewardship Area - s.25 Conservation Act 1987
2796169	Conservation Area Coopers Lagoon	1.18	Stewardship Area - s.25 Conservation Act 1987
2796170	Conservation Area Pacific Ocean Foreshore Coopers Lagoon	24.99	Stewardship Area - s.25 Conservation Act 1987
2796171	Conservation Area Pacific Ocean Foreshore Kaitorete Spit	147.36	Stewardship Area - s.25 Conservation Act 1987
2796172	Waihora Scientific Reserve	79.89	Scientific Reserve - s.21 Reserves Act 1977
2796182	Conservation Area Kaitorete Spit	186.03	Stewardship Area - s.25 Conservation Act 1987
2796183	Conservation Area Kaitorete Spit	0.46	Stewardship Area - s.25 Conservation Act 1987
2796186	Conservation Area Kaitorete Spit	31.65	Stewardship Area - s.25 Conservation Act 1987
2796187	Coopers Lagoon Government Purpose Reserve Wildlife Management	11.83	Government Purpose Reserve - s.22 Reserves Act 1977
2796416	Transit Of Venus Historic Reserve	0.40	Historic Reserve - s.18 Reserves Act 1977
2796520	LII River Marginal Strip	0.05	Fixed Marginal Strip - s.24(3) Conservation Act 1987
2796601	Gravel Reserve Woolshed Road	0.20	Local Purpose Reserve - s.23 Reserves Act 1977
2796750	Gravel Reserve Station Road	0.20	Local Purpose Reserve - s.23 Reserves Act 1977
2796763	Local Purpose Reserve Chattertons Road	4.05	Local Purpose Reserve - s.23 Reserves Act 1977
2796822	Conservation Area Waimakariri Riverbed Eyrewell Fo	1.30	Fixed Marginal Strip - s.24(3) Conservation Act 1987
2798630	Conservation Area L II River Silverstream	1.17	Stewardship Area - s.25 Conservation Act 1987
2798829	Conservation Purpose Reserve Timber Yard Road	0.66	Local Purpose Reserve - s.23 Reserves Act 1977
2798830	Greenpark Sands Conservation Area	1244.93	Stewardship Area - s.25 Conservation Act 1987
2798832	Yarrs Flat Wildlife Reserve	288.88	Government Purpose Reserve - s.22 Reserves Act 1977
2798835	Selwyn Wildlife Management Reserve	167.35	Government Purpose Reserve - s.22 Reserves Act 1977
2798836	Conservation Area Greenpark Sands Lower Selwyn Hut	1.93	Stewardship Area - s.25 Conservation Act 1987
2798838	Harts Creek Wildlife Management Reserve	232.80	Government Purpose Reserve - s.22 Reserves Act 1977
2798840	Lakeside Wildlife Management Reserve	103.41	Government Purpose Reserve - s.22 Reserves Act 1977
2798842	Conservation Area Landing Yard Point	2.96	Stewardship Area - s.25 Conservation Act 1987
2798843	Leeston Tramway Reserve	6.81	Local Purpose Reserve - s.23 Reserves Act 1977
2799098	Wards Government Purpose Reserve Wildlife Management	108.89	Government Purpose Reserve - s.22 Reserves Act 1977
2799099	Williams Government Purpose Reserve Wildlife Management	87.55	Government Purpose Reserve - s.22 Reserves Act 1977
2799101	Conservation Area Lower Selwyn Huts	1.93	Stewardship Area - s.25 Conservation Act 1987
2799119	Conservation Area Te Waihora Proposed Picnic Area	7.82	Stewardship Area - s.25 Conservation Act 1987
2799121	Conservation Area Te Waihora Harts Creek	6.82	Stewardship Area - s.25 Conservation Act 1987
2799123	Conservation Area Halswell River Leadleys Road	0.33	Stewardship Area - s.25 Conservation Act 1987
2799125	Conservation Area L II River	1.19	Stewardship Area - s.25 Conservation Act 1987
2799126	Conservation Area L II River Silverstream	0.24	Stewardship Area - s.25 Conservation Act 1987
2799312	Selwyn River Marginal Strip	2.52	Moveable Marginal Strip - s.24(1) & (2) Conservation Act 1987
2799342	Water Race Reserve Selwyn River	5.11	Local Purpose Reserve - s.23 Reserves Act 1977
2799343	Conservation Area Selwyn Riverbed Stoneydale	163.11	Stewardship Area - s.25 Conservation Act 1987
2799346	Selwyn River Marginal Strip	0.64	Moveable Marginal Strip - s.24(1) & (2) Conservation Act 1987
2799370	Gravel Reserve Wards Road	2.04	Local Purpose Reserve - s.23 Reserves Act 1977
2799850	Selwyn River Conservation Reserve	16.21	Local Purpose Reserve - s.23 Reserves Act 1977
2799858	Springston Cemetery Reserve	2.07	Local Purpose Reserve - s.23 Reserves Act 1977
2807059	Waianiwanuiwa River Marginal Strip	3.51	Moveable Marginal Strip - s.24(1) & (2) Conservation Act 1987
2807160	Cemetery Kimberley	4.01	Local Purpose Reserve - s.23 Reserves Act 1977
2807609	Gravel Reserve Heighfield Road	0.10	Local Purpose Reserve - s.23 Reserves Act 1977
2807620	Gravel Reserve Highfield Road	0.10	Local Purpose Reserve - s.23 Reserves Act 1977
2807630	Community Buildings Reserve Darfield	0.20	Local Purpose Reserve - s.23 Reserves Act 1977
2807642	Homebush Marginal Strip	3.28	Fixed Marginal Strip - s.24(3) Conservation Act 1987
2807653	Selwyn River Marginal Strip	6.74	Moveable Marginal Strip - s.24(1) & (2) Conservation Act 1987
2807674	Selwyn River Marginal Strip	0.12	Fixed Marginal Strip - s.24(3) Conservation Act 1987
2807991	Conservation Area Rakaia Island	17.47	Stewardship Area - s.25 Conservation Act 1987
2807995	Conservation Area Rakaia Island	2.33	Stewardship Area - s.25 Conservation Act 1987
2808000	Conservation Area Rakaia Riverbed Dobbins Ford	17.35	Stewardship Area - s.25 Conservation Act 1987
2808008	Rakaia Huts Reserve	13.16	Local Purpose Reserve - s.23 Reserves Act 1977
2808073	Rakaia River Mouth Marginal Strip	3.94	Fixed Marginal Strip - s.24(3) Conservation Act 1987
2808080	Rakaia River Marginal Strip	0.88	Moveable Marginal Strip - s.24(1) & (2) Conservation Act 1987
2808090	Gravel Reserve Ardlui Road	1.34	Local Purpose Reserve - s.23 Reserves Act 1977
2808094	Greendale Cemetery Reserve	1.96	Local Purpose Reserve - s.23 Reserves Act 1977
2808116	Conservation Area Selwyn Riverbed Vanliegh	10.36	Stewardship Area - s.25 Conservation Act 1987
2808119	Gravel Reserve Coaltrack Road	4.12	Local Purpose Reserve - s.23 Reserves Act 1977
2808138	Gravel Reserve Sheats Road	2.03	Local Purpose Reserve - s.23 Reserves Act 1977
2808145	Conservation Area Selwyn Riverbed Meadowcroft	0.55	Stewardship Area - s.25 Conservation Act 1987
2808158	Conservation Area Taihoa	5.34	Stewardship Area - s.25 Conservation Act 1987
2808177	Conservation Area Rakaia Riverbed Mead	21.12	Stewardship Area - s.25 Conservation Act 1987
2808180	Conservation Area Rakaia Riverbed Rosebank	56.56	Stewardship Area - s.25 Conservation Act 1987
2808181	Conservation Area Rakaia Riverbed Mead	2.91	Stewardship Area - s.25 Conservation Act 1987
2808183	Government Purpose Reserve Rakaia Riverbed	681.27	Government Purpose Reserve - s.22 Reserves Act 1977
2808184	Gravel Reserve North Rakaia Road	0.49	Local Purpose Reserve - s.23 Reserves Act 1977
2808199	Tramway Reserve Glassbys Road	23.39	Local Purpose Reserve - s.23 Reserves Act 1977
2808200	Bankside Scientific Reserve	2.66	Scientific Reserve - s.21 Reserves Act 1977
2808208	Conservation Area Rakaia Riverbed Acton	9.59	Stewardship Area - s.25 Conservation Act 1987
2808213	Conservation Area Rakaia Riverbed Aberavon	82.11	Stewardship Area - s.25 Conservation Act 1987
2808222	Gravel Reserve Terrace Road	0.41	Local Purpose Reserve - s.23 Reserves Act 1977
2808225	Provincial Government Purpose Reserve Rakaia	0.35	Government Purpose Reserve - s.22 Reserves Act 1977
2808226	Local Purpose Reserve Public Utility Rakaia	0.20	Local Purpose Reserve - s.23 Reserves Act 1977
2808230	Rakaia River Marginal Strip	3.20	Fixed Marginal Strip - s.24(3) Conservation Act 1987





Map 7.15 Inventory of public conservation land and waters

Conservation Management Strategy  
 Canterbury (Waitaha)

**Map 15 of 23**

Conservation unit data is current as of 31/10/2015





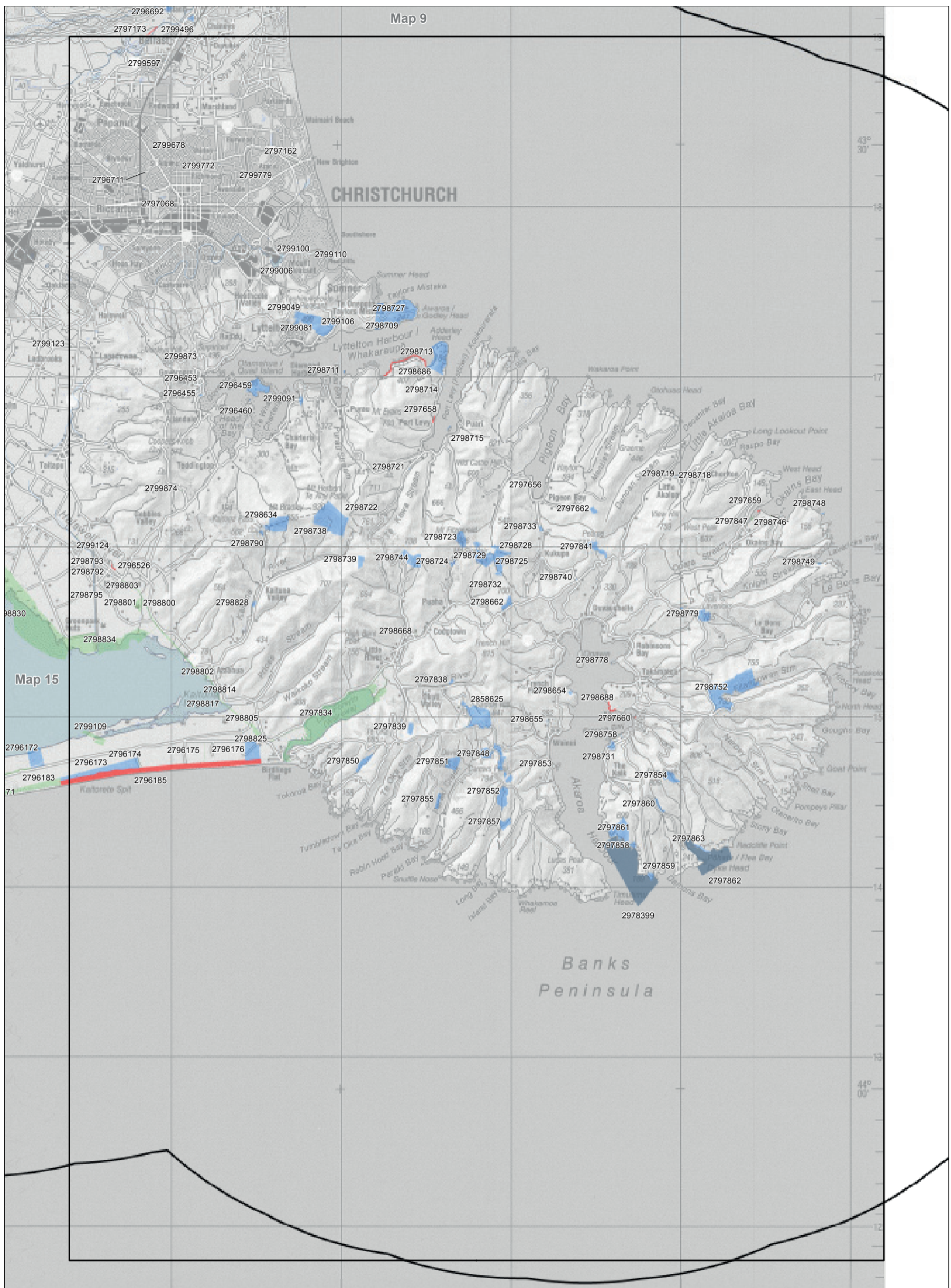
**Inventory of public conservation land and waters  
Canterbury  
Map table 7.16**

NaPALIS ID	Protected Area Name	Area (ha)	Legal Description
2796173	Kaitorete Spit Scientific Reserve	170.57	Scientific Reserve - s.21 Reserves Act 1977
2796174	Conservation Area Kaitorete Spit	1.11	Stewardship Area - s.25 Conservation Act 1987
2796175	Conservation Area Kaitorete Spit	2.55	Stewardship Area - s.25 Conservation Act 1987
2796176	Kaitorete Spit Scientific Reserve	90.95	Scientific Reserve - s.21 Reserves Act 1977
2796185	Kaitorete Spit Conservation Area Marginal Strip	295.73	Fixed Marginal Strip - s.24(3) Conservation Act 1987
2796453	Governors Bay Scenic Reserve	0.00	Scenic Reserve - s.19(1)(a) Reserves Act 1977
2796455	Sage Recreation Reserve	1.62	Recreation Reserve - s.17 Reserves Act 1977
2796459	Quail Island Recreation Reserve	80.39	Recreation Reserve - s.17 Reserves Act 1977
2796460	King Billy Island Scenic Reserve	0.45	Scenic Reserve - s.19(1)(a) Reserves Act 1977
2796526	Halswell River Marginal Strip	0.36	Fixed Marginal Strip - s.24(3) Conservation Act 1987
2796711	Esplanade Reserve Wairarapa Stream Riverbed	0.00	Local Purpose Reserve - s.23 Reserves Act 1977
2797068	Conservation Area Avon River Christchurch City	0.02	Stewardship Area - s.25 Conservation Act 1987
2797162	Conservation Area Avon River Tow Path Bexley	0.66	Stewardship Area - s.25 Conservation Act 1987
2797656	Conservation Area Annandale	0.21	Stewardship Area - s.25 Conservation Act 1987
2797658	Port Levy Marginal Strip	0.74	Fixed Marginal Strip - s.24(3) Conservation Act 1987
2797659	Okains Bay Marginal Strip	0.29	Fixed Marginal Strip - s.24(3) Conservation Act 1987
2797660	Akaroa Marginal Strip	0.03	Fixed Marginal Strip - s.24(3) Conservation Act 1987
2797662	Goodwin Scenic Reserve	11.63	Scenic Reserve - s.19(1)(a) Reserves Act 1977
2797834	Wairewa Conservation Area	651.29	Stewardship Area - s.25 Conservation Act 1987
2797838	Okuti Valley Scenic Reserve	4.50	Scenic Reserve - s.19(1)(a) Reserves Act 1977
2797839	Te Oka Scenic Reserve	19.23	Scenic Reserve - s.19(1)(a) Reserves Act 1977
2797841	Mt Pearce Scenic Reserve	34.66	Scenic Reserve - s.19(1)(a) Reserves Act 1977
2797847	Conservation Area Okains Bay	2.31	Stewardship Area - s.25 Conservation Act 1987
2797848	Peraki Saddle Scenic Reserve	74.28	Scenic Reserve - s.19(1)(a) Reserves Act 1977
2797850	Magnet Bay Scenic Reserve	33.22	Scenic Reserve - s.19(1)(a) Reserves Act 1977
2797851	Devils Gap Scenic Reserve	49.09	Scenic Reserve - s.19(1)(a) Reserves Act 1977
2797852	Carews Peak Scenic Reserve	79.64	Scenic Reserve - s.19(1)(a) Reserves Act 1977
2797853	Conservation Area Cape Three Points	0.12	Stewardship Area - s.25 Conservation Act 1987
2797854	Armstrong Scenic Reserve	36.64	Scenic Reserve - s.19(1)(a) Reserves Act 1977
2797855	Peraki Bay Scenic Reserve	18.82	Scenic Reserve - s.19(1)(a) Reserves Act 1977
2797857	Long Bay Scenic Reserve	28.98	Scenic Reserve - s.19(1)(a) Reserves Act 1977
2797858	Dan Rogers Nature Reserve	8.02	Nature Reserve - s.20 Reserves Act 1977
2797859	Akaroa Head Scenic Reserve	12.38	Scenic Reserve - s.19(1)(a) Reserves Act 1977
2797860	Tutakakahikura Scenic Reserve	11.40	Scenic Reserve - s.19(1)(a) Reserves Act 1977
2797861	Palm Gully Scenic Reserve	110.56	Scenic Reserve - s.19(1)(a) Reserves Act 1977
2797862	Pohatu Marine Reserve	233.94	Marine Reserve - s.3 Marine Reserves Act 1971
2797863	Pohatu Government Purpose Reserve Wildlife Refuge	13.13	Government Purpose Reserve - s.22 Reserves Act 1977
2798634	Sign Of The Packhorse Scenic Reserve	100.78	Scenic Reserve - s.19(1)(a) Reserves Act 1977
2798654	Petit Carenage Recreation Reserve	4.18	Recreation Reserve - s.17 Reserves Act 1977
2798655	Wainui Scenic Reserve	0.81	Scenic Reserve - s.19(1)(a) Reserves Act 1977
2798662	Montgomery Park Scenic Reserve	23.46	Scenic Reserve - s.19(1)(a) Reserves Act 1977
2798668	Conservation Area Little River Cemetery	0.81	Stewardship Area - s.25 Conservation Act 1987
2798686	Camp Bay Marginal Strip	7.24	Fixed Marginal Strip - s.24(3) Conservation Act 1987
2798688	Akaroa Harbour Marginal Strip	2.04	Fixed Marginal Strip - s.24(3) Conservation Act 1987
2798709	Godley Head Farm Park Reserve	198.39	Government Purpose Reserve - s.22 Reserves Act 1977
2798711	Ripapa Island Historic Reserve	1.23	Historic Reserve - s.18 Reserves Act 1977
2798713	Adderley Head Scenic Reserve	146.84	Scenic Reserve - s.19(1)(a) Reserves Act 1977
2798714	Pukerauaruhe Island Recreation Reserve	0.45	Recreation Reserve - s.17 Reserves Act 1977
2798715	Horomaka Island Recreation Reserve	1.49	Recreation Reserve - s.17 Reserves Act 1977
2798718	Little Akaloa Scenic Reserve	0.43	Scenic Reserve - s.19(1)(a) Reserves Act 1977
2798719	Cemetery Reserve - Little Akaloa	0.21	Local Purpose Reserve - s.23 Reserves Act 1977
2798721	Port Levy Recreation Reserve	0.71	Recreation Reserve - s.17 Reserves Act 1977
2798722	Conservation Area Western Valley	0.43	Stewardship Area - s.25 Conservation Act 1987
2798723	Mt Fitzgerald Scenic Reserve	44.01	Scenic Reserve - s.19(1)(a) Reserves Act 1977
2798724	Morice Settlement Scenic Reserve	5.94	Scenic Reserve - s.19(1)(a) Reserves Act 1977
2798725	Mt Sinclair Scenic Reserve	141.56	Scenic Reserve - s.19(1)(a) Reserves Act 1977
2798727	Godley Head Farm Park Reserve	72.11	Government Purpose Reserve - s.22 Reserves Act 1977
2798728	Glenralloch Scenic Reserve	6.67	Scenic Reserve - s.19(1)(a) Reserves Act 1977
2798729	Waghorn Scenic Reserve	10.00	Scenic Reserve - s.19(1)(a) Reserves Act 1977
2798731	Historic Reserve Takapuneke	13.66	Historic Reserve - s.18 Reserves Act 1977
2798732	Whatarangi Scenic Reserve	4.36	Scenic Reserve - s.19(1)(a) Reserves Act 1977
2798733	Hay Scenic Reserve	5.92	Scenic Reserve - s.19(1)(a) Reserves Act 1977
2798738	Mt Herbert Scenic Reserve	241.78	Scenic Reserve - s.19(1)(a) Reserves Act 1977
2798739	Kaituna Spur Scenic Reserve	23.00	Scenic Reserve - s.19(1)(a) Reserves Act 1977
2798740	Gravel Reserve Pigeon Bay Road	0.54	Local Purpose Reserve - s.23 Reserves Act 1977
2798744	Waipuna Saddle Scenic Reserve	71.62	Scenic Reserve - s.19(1)(a) Reserves Act 1977
2798746	Conservation Area Okains Bay	0.28	Stewardship Area - s.25 Conservation Act 1987
2798748	Te puke-ki-wiataha	1.54	Historic Reserve - s.18 Reserves Act 1977
2798749	Cemetery Reserve Lavericks Bay	2.23	Local Purpose Reserve - s.23 Reserves Act 1977
2798752	Ellangowan Scenic Reserve	314.03	Scenic Reserve - s.19(1)(a) Reserves Act 1977
2798758	Cemetery Reserve Akaroa	0.62	Local Purpose Reserve - s.23 Reserves Act 1977
2798778	Hammond Point Recreation Reserve	0.84	Recreation Reserve - s.17 Reserves Act 1977
2798779	Otepatotu Scenic Reserve	39.49	Scenic Reserve - s.19(1)(a) Reserves Act 1977
2798790	Sign Of The Packhorse Scenic Reserve	4.76	Scenic Reserve - s.19(1)(a) Reserves Act 1977
2798792	Conservation Area Halswell River Canal Motukarara Raceway	0.05	Stewardship Area - s.25 Conservation Act 1987
2798793	Conservation Area Halswell River Canal Motukarara Raceway	0.05	Stewardship Area - s.25 Conservation Act 1987
2798795	Conservation Area Halswell River Canal Motukarara Raceway	0.13	Stewardship Area - s.25 Conservation Act 1987
2798800	Conservation Area McQueens Lagoon	19.57	Stewardship Area - s.25 Conservation Act 1987
2798801	Conservation Area - McQueens Lagoon	4.94	Stewardship Area - s.25 Conservation Act 1987
2798802	Conservation Area Motukarara Railtrail	130.68	Stewardship Area - s.25 Conservation Act 1987
2798803	Motukarara Nursery Reserve	0.31	Government Purpose Reserve - s.22 Reserves Act 1977
2798805	Conservation Area Motukarara Railtrail	3.26	Stewardship Area - s.25 Conservation Act 1987
2798814	Conservation Area Motukarara Railtrail Aorangi	2.97	Stewardship Area - s.25 Conservation Act 1987
2798817	Conservation Area Kaituna Lagoon	0.20	Stewardship Area - s.25 Conservation Act 1987
2798825	Conservation Area Omahanui	0.73	Stewardship Area - s.25 Conservation Act 1987
2798828	Kaituna Valley Scenic Reserve	6.03	Scenic Reserve - s.19(1)(a) Reserves Act 1977
2798834	Conservation Area Lakelands Wildlife Reserve	212.40	Stewardship Area - s.25 Conservation Act 1987
2799006	Recreation Reserve Mount Pleasant	0.13	Recreation Reserve - s.17 Reserves Act 1977
2799049	Lytelton Scenic Reserve	27.45	Scenic Reserve - s.19(1)(a) Reserves Act 1977
2799081	Buckleys Bay Scenic Reserve	9.47	Scenic Reserve - s.19(1)(a) Reserves Act 1977
2799091	Hunter Native Forest Scenic Reserve	8.29	Scenic Reserve - s.19(1)(a) Reserves Act 1977
2799100	Conservation Area McCormacks Bay	0.28	Stewardship Area - s.25 Conservation Act 1987
2799106	Tauhinukorokio Scenic Reserve	119.11	Scenic Reserve - s.19(1)(a) Reserves Act 1977
2799109	Conservation Area Kaitorete Spit	39.34	Stewardship Area - s.25 Conservation Act 1987
2799110	Conservation Area RedCliffs School	0.34	Stewardship Area - s.25 Conservation Act 1987
2799124	Ahuriri Lagoon Conservation Area	0.67	Stewardship Area - s.25 Conservation Act 1987
2799597	Kaputohe Historic Reserve	0.27	Historic Reserve - s.18 Reserves Act 1977



Inventory of public conservation land and waters  
 Canterbury  
 Map table 7.16

NaPALIS ID	Protected Area Name	Area (ha)	Legal Description
2799678	Local Purpose Reserve Kindergarten Mairehau	0.10	Local Purpose Reserve - s.23 Reserves Act 1977
2799772	Local Purpose Reserve Kindergarten Dallington	0.14	Local Purpose Reserve - s.23 Reserves Act 1977
2799779	Education (pre-school) Reserve Aranui	0.10	Local Purpose Reserve - s.23 Reserves Act 1977
2799873	Conservation Area Dyers Pass Road Governors Bay	0.03	Stewardship Area - s.25 Conservation Act 1987
2799874	Conservation Area Summit Road Gebbies Pass	0.52	Stewardship Area - s.25 Conservation Act 1987
2858625	Saddle Hill Scenic Reserve	148.07	Scenic Reserve - s.19(1)(a) Reserves Act 1977
2978399	Akaroa Marine Reserve	512.41	Marine Reserve - s.3 Marine Reserves Act 1971

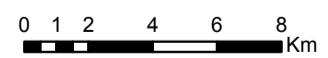


Map 7.16 Inventory of public conservation land and waters

Conservation Management Strategy  
Canterbury (Waitaha)

**Map 16 of 23**

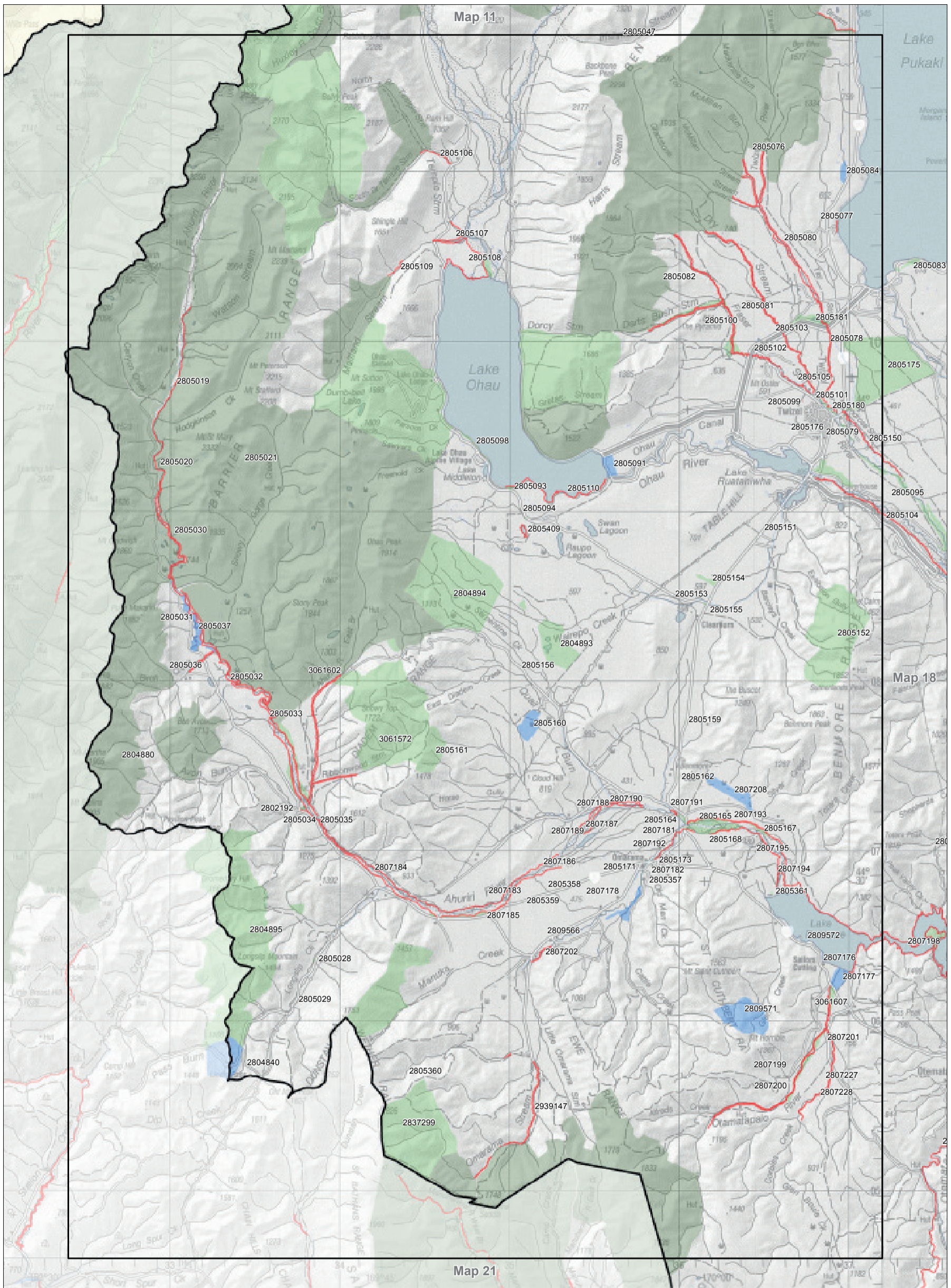
Conservation unit data is current as of 31/10/2015



**Inventory of public conservation land and waters  
Canterbury  
Map table 7.17**

NaPALIS ID	Protected Area Name	Area (ha)	Legal Description
2802192	Avon Burn Marginal Strip	0.74	Moveable Marginal Strip - s.24(1) & (2) Conservation Act 1987
2804840	Lindis Pass Scenic Reserve	399.61	Scenic Reserve - s.19(1)(a) Reserves Act 1977
2804880	Hawea Conservation Park	105493.70	Conservation Park - s.19 Conservation Act 1987
2804893	Quailburn Conservation Area	401.70	Stewardship Area - s.25 Conservation Act 1987
2804894	Ahuriri Conservation Area	2124.11	Stewardship Area - s.25 Conservation Act 1987
2804895	Lindis Conservation Area	4062.03	Stewardship Area - s.25 Conservation Act 1987
2805019	Ahuriri River Marginal Strip	20.16	Fixed Marginal Strip - s.24(3) Conservation Act 1987
2805020	Ahuriri River Marginal Strip	2.17	Fixed Marginal Strip - s.24(3) Conservation Act 1987
2805021	Ahuriri Conservation Park	43107.19	Conservation Park - s.19 Conservation Act 1987
2805028	Conservation Area Longslip Creek	2.16	Stewardship Area - s.25 Conservation Act 1987
2805029	Conservation Area McLays Creek	0.54	Stewardship Area - s.25 Conservation Act 1987
2805030	Ahuriri River Marginal Strip	18.48	Fixed Marginal Strip - s.24(3) Conservation Act 1987
2805031	Ahuriri River Marginal Strip	8.41	Fixed Marginal Strip - s.24(3) Conservation Act 1987
2805032	Ben Avon Marginal Strip	79.70	Fixed Marginal Strip - s.24(3) Conservation Act 1987
2805033	Ahuriri River Marginal Strip	51.15	Fixed Marginal Strip - s.24(3) Conservation Act 1987
2805034	Ahuriri River Marginal Strip	0.62	Fixed Marginal Strip - s.24(3) Conservation Act 1987
2805035	Ahuriri River Marginal Strip	4.50	Fixed Marginal Strip - s.24(3) Conservation Act 1987
2805036	Birch Creek Marginal Strips	8.27	Moveable Marginal Strip - s.24(1) & (2) Conservation Act 1987
2805037	Ben Avon Scenic Reserve	124.04	Scenic Reserve - s.19(1)(a) Reserves Act 1977
2805076	Twizel River Marginal Strip	41.03	Moveable Marginal Strip - s.24(1) & (2) Conservation Act 1987
2805077	Lake Pukaki Marginal Strip	1.37	Moveable Marginal Strip - s.24(1) & (2) Conservation Act 1987
2805078	Twizel River Marginal Strip	22.67	Fixed Marginal Strip - s.24(3) Conservation Act 1987
2805079	Conservation Area Twizel Township	0.63	Stewardship Area - s.25 Conservation Act 1987
2805080	Twizel River Marginal Strip	20.06	Moveable Marginal Strip - s.24(1) & (2) Conservation Act 1987
2805081	Dry Stream Marginal Strip	27.54	Moveable Marginal Strip - s.24(1) & (2) Conservation Act 1987
2805082	Fraser Stream Marginal Strip	21.56	Moveable Marginal Strip - s.24(1) & (2) Conservation Act 1987
2805084	Pukaki Scientific Reserve	35.69	Scientific Reserve - s.21 Reserves Act 1977
2805091	Ohau Terminal Moraine Scenic Reserve	74.69	Scenic Reserve - s.19(1)(a) Reserves Act 1977
2805093	Conservation Area Lake Ohau South	6.98	Stewardship Area - s.25 Conservation Act 1987
2805094	Conservation Area Red Lagoon	0.93	Stewardship Area - s.25 Conservation Act 1987
2805098	Conservation Area Lake Ohau West	20.67	Stewardship Area - s.25 Conservation Act 1987
2805099	Fraser Stream Marginal Strip	2.29	Moveable Marginal Strip - s.24(1) & (2) Conservation Act 1987
2805100	Darts Bush Stream Marginal Strip	26.93	Fixed Marginal Strip - s.24(3) Conservation Act 1987
2805101	Dry Stream Marginal Strip (Moveable)	4.04	Moveable Marginal Strip - s.24(1) & (2) Conservation Act 1987
2805102	Fraser Stream Marginal Strip	20.57	Fixed Marginal Strip - s.24(3) Conservation Act 1987
2805103	Dry Stream Marginal Strip	32.21	Fixed Marginal Strip - s.24(3) Conservation Act 1987
2805105	Twizel River Marginal Strip (Movable)	7.30	Moveable Marginal Strip - s.24(1) & (2) Conservation Act 1987
2805106	Huxley Sub 3 Marginal Strip	4.65	Fixed Marginal Strip - s.24(3) Conservation Act 1987
2805107	Hopkins River Marginal Strip	6.22	Fixed Marginal Strip - s.24(3) Conservation Act 1987
2805108	Hopkins River / Lake Ohau Marginal Strip	18.20	Fixed Marginal Strip - s.24(3) Conservation Act 1987
2805109	Ohau Recreation Area Marginal Strip	2.90	Fixed Marginal Strip - s.24(3) Conservation Act 1987
2805110	Lake Ohau Marginal Strip	20.53	Fixed Marginal Strip - s.24(3) Conservation Act 1987
2805151	Conservation Area Twizel Township	0.87	Stewardship Area - s.25 Conservation Act 1987
2805152	Glenbrook Conservation Area	1463.85	Stewardship Area - s.25 Conservation Act 1987
2805153	Conservation Area Benmore	1.98	Stewardship Area - s.25 Conservation Act 1987
2805154	Spring Creek Conservation Area	36.38	Stewardship Area - s.25 Conservation Act 1987
2805155	Conservation Area Benmore	0.87	Stewardship Area - s.25 Conservation Act 1987
2805156	Conservation Area Serpentine Creek	0.81	Stewardship Area - s.25 Conservation Act 1987
2805159	Conservation Area The Glens	0.89	Stewardship Area - s.25 Conservation Act 1987
2805160	Bendhu Scientific Reserve	156.36	Scientific Reserve - s.21 Reserves Act 1977
2805161	Ben Dhu Conservation Area	264.31	Stewardship Area - s.25 Conservation Act 1987
2805162	Conservation Area Willowburn	0.80	Stewardship Area - s.25 Conservation Act 1987
2805164	Lower Ahuriri Riverbed Conservation Area True Left	10.47	Stewardship Area - s.25 Conservation Act 1987
2805165	Lower Ahuriri Riverbed Conservation Area True Left	73.84	Stewardship Area - s.25 Conservation Act 1987
2805167	Lower Ahuriri Riverbed Conservation Area True Left	20.26	Stewardship Area - s.25 Conservation Act 1987
2805168	Lower Ahuriri Riverbed Conservation Area True Right	95.99	Stewardship Area - s.25 Conservation Act 1987
2805171	Conservation Area Omarama Township	0.40	Stewardship Area - s.25 Conservation Act 1987
2805173	Conservation Area Omarama Township	0.15	Stewardship Area - s.25 Conservation Act 1987
2805176	Conservation Area Twizel Area Office	0.16	Stewardship Area - s.25 Conservation Act 1987
2805180	Omahau Downs Conservation Area	14.62	Stewardship Area - s.25 Conservation Act 1987
2805181	Lake Poaka Conservation Area	72.00	Stewardship Area - s.25 Conservation Act 1987
2805357	Conservation Area Water Race Omarama Township	3.40	Stewardship Area - s.25 Conservation Act 1987
2805358	Conservation Area Omarama Lindis Pass Road	0.40	Stewardship Area - s.25 Conservation Act 1987
2805359	Conservation Area Omarama Lindis Pass Road	0.40	Stewardship Area - s.25 Conservation Act 1987
2805360	Conservation Area Killermont	1142.32	Stewardship Area - s.25 Conservation Act 1987
2805361	Conservation Area Head of Lake Benmore	1.77	Stewardship Area - s.25 Conservation Act 1987
2805409	Raupo Lagoon Marginal Strip	4.08	Fixed Marginal Strip - s.24(3) Conservation Act 1987
2807176	Conservation Area Sailors Cutting	0.28	Stewardship Area - s.25 Conservation Act 1987
2807177	Otamatapaio Recreation Reserve	84.32	Recreation Reserve - s.17 Reserves Act 1977
2807178	Conservation Area Omarama Refuse Dump	0.94	Stewardship Area - s.25 Conservation Act 1987
2807181	Lower Ahuriri Riverbed Conservation Area	1.08	Stewardship Area - s.25 Conservation Act 1987
2807182	Conservation Area Omarama River strip	0.97	Stewardship Area - s.25 Conservation Act 1987
2807183	Ahuriri River Marginal Strip	21.89	Fixed Marginal Strip - s.24(3) Conservation Act 1987
2807184	Ahuriri River Marginal Strip	37.71	Fixed Marginal Strip - s.24(3) Conservation Act 1987
2807185	Ahuriri River Marginal Strip	15.09	Fixed Marginal Strip - s.24(3) Conservation Act 1987
2807186	Ahuriri River Marginal Strip	4.47	Fixed Marginal Strip - s.24(3) Conservation Act 1987
2807187	Ahuriri River Marginal Strip	2.46	Fixed Marginal Strip - s.24(3) Conservation Act 1987
2807188	Ahuriri River Marginal Strip	8.10	Fixed Marginal Strip - s.24(3) Conservation Act 1987
2807189	Ahuriri River Marginal Strip	1.53	Fixed Marginal Strip - s.24(3) Conservation Act 1987
2807190	Ahuriri River Marginal Strip	8.22	Fixed Marginal Strip - s.24(3) Conservation Act 1987
2807191	Ahuriri River Marginal Strip	2.77	Fixed Marginal Strip - s.24(3) Conservation Act 1987
2807192	Omarama Marginal Strip	5.28	Fixed Marginal Strip - s.24(3) Conservation Act 1987
2807193	Ahuriri River Marginal Strip	28.03	Fixed Marginal Strip - s.24(3) Conservation Act 1987
2807194	Ahuriri River Marginal Strip	8.05	Fixed Marginal Strip - s.24(3) Conservation Act 1987
2807195	Ahuriri River Marginal Strip	20.19	Fixed Marginal Strip - s.24(3) Conservation Act 1987
2807199	Otamatapaio Marginal Strip	36.18	Fixed Marginal Strip - s.24(3) Conservation Act 1987
2807200	Otamatapaio Marginal Strip	24.66	Moveable Marginal Strip - s.24(1) & (2) Conservation Act 1987
2807201	Sailors Cutting Marginal Strip	5.06	Fixed Marginal Strip - s.24(3) Conservation Act 1987
2807202	Tara Hills Research Station Marginal Strip	4.62	Fixed Marginal Strip - s.24(3) Conservation Act 1987
2807208	Ben Omar Wetland Government Purpose Reserve	171.02	Government Purpose Reserve - s.22 Reserves Act 1977
2807227	Corbies Creek Marginal Strip	16.29	Fixed Marginal Strip - s.24(3) Conservation Act 1987
2807228	Corbies Creek Marginal Strip	11.19	Fixed Marginal Strip - s.24(3) Conservation Act 1987
2809566	Berwen Road Soil Conservation Reserve	0.06	Local Purpose Reserve - s.23 Reserves Act 1977
2809571	Otamatapaio Scenic Reserve	448.78	Scenic Reserve - s.19(1)(a) Reserves Act 1977
2809572	Recreation Reserve Otamatapaio	4.82	Recreation Reserve - s.17 Reserves Act 1977
2837299	Dunstan Peaks	1618.58	Stewardship Area - s.25 Conservation Act 1987
2939147	Omarama Stream & Tributaries Marginal Strip	35.79	Moveable Marginal Strip - s.24(1) & (2) Conservation Act 1987
3061572	Ribbonwood Conservation Area	2454.38	Stewardship Area - s.25 Conservation Act 1987
3061602	Ribbonwood Tenure Review Marginal Strips	47.41	Moveable Marginal Strip - s.24(1) & (2) Conservation Act 1987
3061607	Bog Roy Conservation Area	158.06	Stewardship Area - s.25 Conservation Act 1987



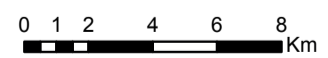


Map 7.17 Inventory of public conservation land and waters

Conservation Management Strategy  
Canterbury (Waitaha)

**Map 17 of 23**

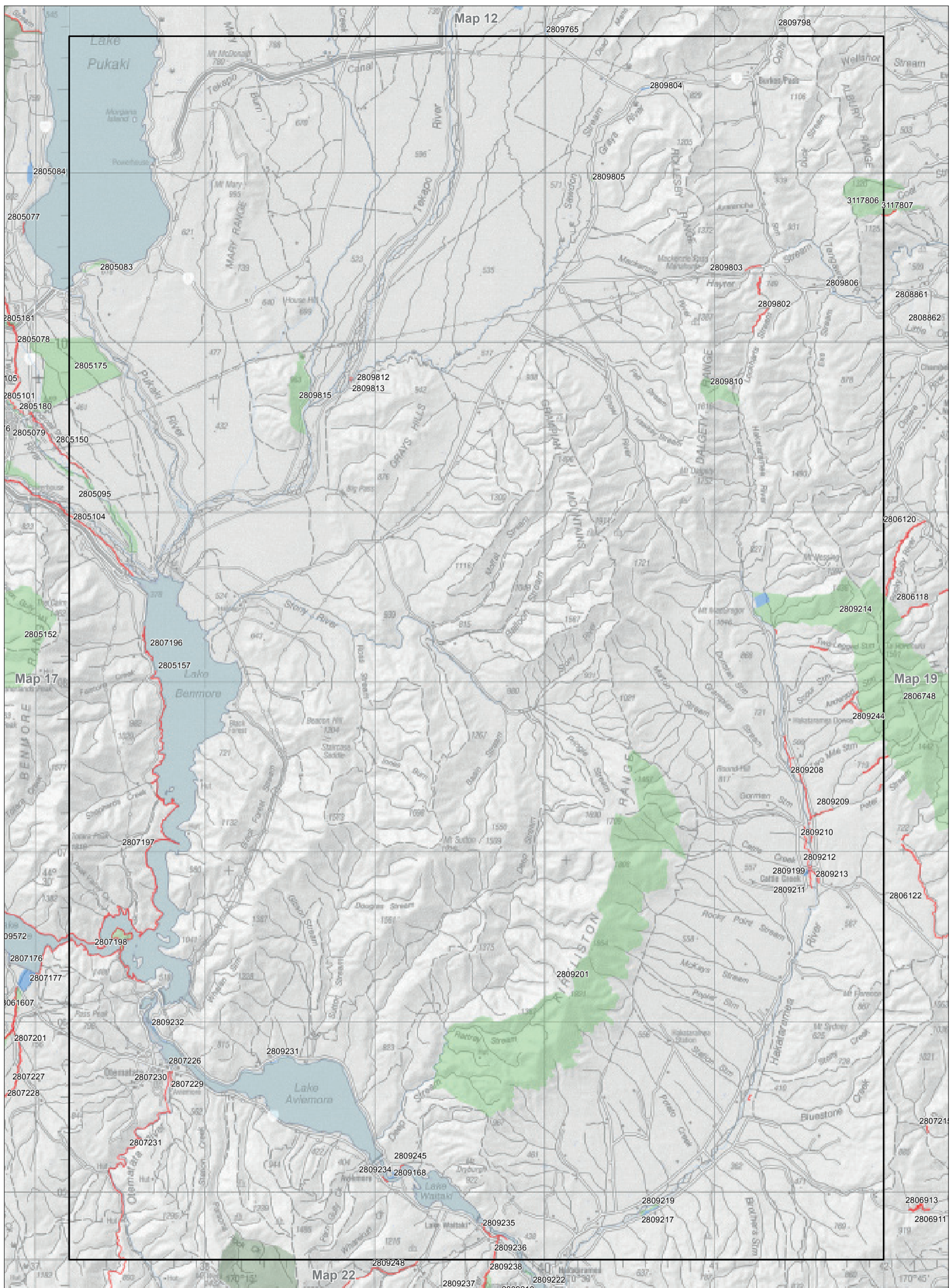
Conservation unit data is current as of 31/10/2015



Inventory of public conservation land and waters  
 Canterbury  
 Map table 7.18

NaPALIS ID	Protected Area Name	Area (ha)	Legal Description
2805083	Lake Pukaki Terminal Moraine Conservation Area	31.50	Stewardship Area - s.25 Conservation Act 1987
2805095	Lake Ruataniwha Conservation Area	334.34	Stewardship Area - s.25 Conservation Act 1987
2805104	Ohau River Marginal Strip	39.03	Fixed Marginal Strip - s.24(3) Conservation Act 1987
2805150	Bendrose Stream Marginal Strip	13.18	Moveable Marginal Strip - s.24(1) & (2) Conservation Act 1987
2805157	Conservation Area Camp Creek	0.64	Stewardship Area - s.25 Conservation Act 1987
2805175	Ben Ohau Conservation Area	1361.00	Stewardship Area - s.25 Conservation Act 1987
2807196	Lake Benmore Marginal Strip	6.14	Fixed Marginal Strip - s.24(3) Conservation Act 1987
2807197	Lake Benmore Marginal Strip	113.06	Fixed Marginal Strip - s.24(3) Conservation Act 1987
2807198	Lake Benmore Marginal Strip	36.22	Fixed Marginal Strip - s.24(3) Conservation Act 1987
2807226	Conservation Area Otamatata River Riparian Strip	0.13	Stewardship Area - s.25 Conservation Act 1987
2807229	Otematata River Marginal Strip	3.72	Fixed Marginal Strip - s.24(3) Conservation Act 1987
2807230	Otematata River Marginal Strip	2.00	Fixed Marginal Strip - s.24(3) Conservation Act 1987
2807231	Otematata River Marginal Strip	23.46	Fixed Marginal Strip - s.24(3) Conservation Act 1987
2809168	Fishermans Bend Camping Ground	11.43	Recreation Reserve - s.17 Reserves Act 1977
2809199	Cattle Creek Recreation Reserve	8.85	Recreation Reserve - s.17 Reserves Act 1977
2809201	Kirkliston Range Conservation Area	8165.17	Stewardship Area - s.25 Conservation Act 1987
2809208	Hakataramea River Marginal Strip	13.08	Fixed Marginal Strip - s.24(3) Conservation Act 1987
2809209	Peter Stream Marginal Strip	2.43	Fixed Marginal Strip - s.24(3) Conservation Act 1987
2809210	Hakataramea River Marginal Strip	8.73	Fixed Marginal Strip - s.24(3) Conservation Act 1987
2809211	Cattle Creek Marginal Strip	2.85	Fixed Marginal Strip - s.24(3) Conservation Act 1987
2809212	Hakataramea River Marginal Strip	0.35	Fixed Marginal Strip - s.24(3) Conservation Act 1987
2809213	Hakataramea River Marginal Strip	2.61	Fixed Marginal Strip - s.24(3) Conservation Act 1987
2809214	Ahanui Conservation Area	404.64	Stewardship Area - s.25 Conservation Act 1987
2809217	Conservation Area Lower Hakataramea Riverbed	19.20	Stewardship Area - s.25 Conservation Act 1987
2809219	Hakataramea River Conservation Reserve	10.64	Local Purpose Reserve - s.23 Reserves Act 1977
2809231	Te Akatarawa Camping Ground	3.69	Recreation Reserve - s.17 Reserves Act 1977
2809232	Briar Gully Camping Ground	8.30	Recreation Reserve - s.17 Reserves Act 1977
2809234	Aviemore Marginal Strip	0.82	Fixed Marginal Strip - s.24(3) Conservation Act 1987
2809235	Lake Waitaki Marginal Strip	6.67	Fixed Marginal Strip - s.24(3) Conservation Act 1987
2809236	Awakino River Marginal Strip	3.09	Fixed Marginal Strip - s.24(3) Conservation Act 1987
2809244	Hakataramea River Marginal Strip	25.29	Moveable Marginal Strip - s.24(1) & (2) Conservation Act 1987
2809245	Lake Waitaki Marginal Strip	0.61	Fixed Marginal Strip - s.24(3) Conservation Act 1987
2809802	Lockharts Stream Marginal Strip	9.83	Moveable Marginal Strip - s.24(1) & (2) Conservation Act 1987
2809803	Hayter Stream Marginal Strip	2.07	Moveable Marginal Strip - s.24(1) & (2) Conservation Act 1987
2809804	Burke Pass Scenic Reserve	13.52	Scenic Reserve - s.19(1)(a) Reserves Act 1977
2809805	Conservation Area Glenrock	5.43	Stewardship Area - s.25 Conservation Act 1987
2809806	Local Purpose Reserve Public Utility Wairewa	1.09	Local Purpose Reserve - s.23 Reserves Act 1977
2809810	Mount Dalgety Conservation Area	231.63	Stewardship Area - s.25 Conservation Act 1987
2809812	Tekapo River Marginal Strip	0.30	Fixed Marginal Strip - s.24(3) Conservation Act 1987
2809813	Tekapo River Marginal Strip	0.23	Fixed Marginal Strip - s.24(3) Conservation Act 1987
2809815	Simons Hill Conservation Area	373.25	Stewardship Area - s.25 Conservation Act 1987
3117806	Conservation Area - "Chetwynd"	609.65	Stewardship Area - s.25 Conservation Act 1987





Map 7.18 Inventory of public conservation land and waters

Conservation Management Strategy  
Canterbury (Waitaha)

**Map 18 of 23**

Conservation unit data is current as of 31/10/2015







**Inventory of public conservation land and waters  
Canterbury  
Map table 7.19**

NaPALIS ID	Protected Area Name	Area (ha)	Legal Description
2799315	Dalkeith Area Stopped Road	1.95	Stewardship Area - s.25 Conservation Act 1987
2806018	Conservation Area Otaio Riverbed	5.85	Stewardship Area - s.25 Conservation Act 1987
2806021	Conservation Area Otaio Rivermouth	0.34	Stewardship Area - s.25 Conservation Act 1987
2806022	River Conservation Reserve Otaio Rivermouth	3.70	Local Purpose Reserve - s.23 Reserves Act 1977
2806023	Otaio Rifle Range Reserve	6.96	Local Purpose Reserve - s.23 Reserves Act 1977
2806024	Otaio Cemetery Reserve	3.90	Local Purpose Reserve - s.23 Reserves Act 1977
2806029	Jeanie Collier Grave Site Reserve	0.04	Historic Reserve - s.18 Reserves Act 1977
2806054	Conservation Area Motukai Ka	2.93	Stewardship Area - s.25 Conservation Act 1987
2806055	Pareora River Conservation Reserve	19.36	Local Purpose Reserve - s.23 Reserves Act 1977
2806060	Conservation Area Pareora Riverbed	10.40	Stewardship Area - s.25 Conservation Act 1987
2806061	Conservation Area Pareora Riverbed	4.73	Stewardship Area - s.25 Conservation Act 1987
2806063	Conservation Area Pareora Riverbed	0.66	Stewardship Area - s.25 Conservation Act 1987
2806065	Conservation Area Pareora Riverbed	9.28	Stewardship Area - s.25 Conservation Act 1987
2806067	Pareora River Marginal Strip	0.76	Fixed Marginal Strip - s.24(3) Conservation Act 1987
2806068	Matata Scenic Reserve	131.83	Scenic Reserve - s.19(1)(a) Reserves Act 1977
2806069	Conservation Area Transferred Road Mount Nimrod	0.37	Stewardship Area - s.25 Conservation Act 1987
2806070	Conservation Area Transferred Road Mount Nimrod	1.01	Stewardship Area - s.25 Conservation Act 1987
2806071	Mt Nimrod Scenic Reserve	141.43	Scenic Reserve - s.19(1)(a) Reserves Act 1977
2806072	Gravel Reserve Elders Road	0.21	Local Purpose Reserve - s.23 Reserves Act 1977
2806073	Gravel Reserve Elders Road	0.43	Local Purpose Reserve - s.23 Reserves Act 1977
2806077	Gravel Reserve Middle Yards Road	0.40	Local Purpose Reserve - s.23 Reserves Act 1977
2806078	Gravel Reserve Middle Yards Road	0.40	Local Purpose Reserve - s.23 Reserves Act 1977
2806081	Conservation Area Pareora Rivermouth	65.76	Stewardship Area - s.25 Conservation Act 1987
2806082	River Protection Reserve Pareora River	1.05	Local Purpose Reserve - s.23 Reserves Act 1977
2806084	Conservation Area Otaio Riverbed	3.49	Stewardship Area - s.25 Conservation Act 1987
2806085	Gravel Reserve Blue Cliffs Road	3.15	Local Purpose Reserve - s.23 Reserves Act 1977
2806086	Otaio Gorge Scenic Reserve	12.57	Scenic Reserve - s.19(1)(a) Reserves Act 1977
2806111	Rock River Marginal Strip	0.92	Moveable Marginal Strip - s.24(1) & (2) Conservation Act 1987
2806112	Pareora River Marginal Strip	2.99	Moveable Marginal Strip - s.24(1) & (2) Conservation Act 1987
2806114	Elder Stream Marginal Strip	1.02	Fixed Marginal Strip - s.24(3) Conservation Act 1987
2806118	Pareora River Marginal Strip	11.27	Moveable Marginal Strip - s.24(1) & (2) Conservation Act 1987
2806120	Rocky Gully Marginal Strip	25.41	Moveable Marginal Strip - s.24(1) & (2) Conservation Act 1987
2806122	Waihao River North Branch Marginal Strip	28.82	Moveable Marginal Strip - s.24(1) & (2) Conservation Act 1987
2806635	Makikihi River Marginal Strip	21.72	Fixed Marginal Strip - s.24(3) Conservation Act 1987
2806641	Waihao River Marginal Strip	3.49	Fixed Marginal Strip - s.24(3) Conservation Act 1987
2806642	North Waihao River Marginal strip	8.56	Fixed Marginal Strip - s.24(3) Conservation Act 1987
2806643	North Waihao River Marginal Strip	24.13	Fixed Marginal Strip - s.24(3) Conservation Act 1987
2806644	North Waihao River Marginal Strip	2.55	Fixed Marginal Strip - s.24(3) Conservation Act 1987
2806645	North Waihao River Marginal Strip	3.43	Fixed Marginal Strip - s.24(3) Conservation Act 1987
2806653	Hunters Hills Marginal Strips	29.65	Moveable Marginal Strip - s.24(1) & (2) Conservation Act 1987
2806708	North Waihao Bush Conservation Area	557.07	Stewardship Area - s.25 Conservation Act 1987
2806709	Conservation Area Wainono Lagoon Foreshore	63.12	Stewardship Area - s.25 Conservation Act 1987
2806710	Wainono Lagoon Conservation Area	387.33	Stewardship Area - s.25 Conservation Act 1987
2806713	Ellis Road Government Purpose Reserve	1.59	Government Purpose Reserve - s.22 Reserves Act 1977
2806714	Mount Studholme Conservation Area	4944.27	Stewardship Area - s.25 Conservation Act 1987
2806715	Hook Bush Conservation Area	1033.98	Stewardship Area - s.25 Conservation Act 1987
2806716	Gunns Bush Conservation Area	225.50	Stewardship Area - s.25 Conservation Act 1987
2806717	Kelceys Bush Conservation Area	120.86	Stewardship Area - s.25 Conservation Act 1987
2806720	General Government Buildings Reserve Makikihi	0.10	Local Purpose Reserve - s.23 Reserves Act 1977
2806721	Conservation Area Makikihi Rivermouth	4.23	Stewardship Area - s.25 Conservation Act 1987
2806735	Conservation Area Transferred Road Mount Nimrod	1.14	Stewardship Area - s.25 Conservation Act 1987
2806736	Conservation Area Transferred Road Mount Nimrod	0.28	Stewardship Area - s.25 Conservation Act 1987
2806737	Normanby Wetland Wildlife Management Reserve	2.19	Government Purpose Reserve - s.22 Reserves Act 1977
2806738	Local Purpose Reserve Public Utility Pareora River	8.61	Local Purpose Reserve - s.23 Reserves Act 1977
2806739	Pareora River Conservation Reserve	16.76	Local Purpose Reserve - s.23 Reserves Act 1977
2806740	River Protection Reserve Pareora River	3.19	Local Purpose Reserve - s.23 Reserves Act 1977
2806741	Pareora River Conservation Reserve	14.69	Local Purpose Reserve - s.23 Reserves Act 1977
2806743	Pareora River Protection Reserve	13.56	Local Purpose Reserve - s.23 Reserves Act 1977
2806744	Pareora River Protection Reserve	6.95	Local Purpose Reserve - s.23 Reserves Act 1977
2806747	Conservation Area Otaio Beach Walkway	0.57	Stewardship Area - s.25 Conservation Act 1987
2806748	Hunter Hills Conservation Area	7982.49	Stewardship Area - s.25 Conservation Act 1987
2806752	Pareora River Marginal Strip	2.28	Fixed Marginal Strip - s.24(3) Conservation Act 1987
2806753	Otaio River Marginal Strip	4.59	Fixed Marginal Strip - s.24(3) Conservation Act 1987
2806754	Otaio River Marginal Strip	6.54	Fixed Marginal Strip - s.24(3) Conservation Act 1987
2806755	Timaru Harbour Marginal Strip	0.10	Fixed Marginal Strip - s.24(3) Conservation Act 1987
2806756	Otaio River Marginal Strip	1.18	Fixed Marginal Strip - s.24(3) Conservation Act 1987
2806758	Makikihi River Marginal Strip	3.40	Fixed Marginal Strip - s.24(3) Conservation Act 1987
2806759	Pareora River Bank Marginal Strip	3.49	Fixed Marginal Strip - s.24(3) Conservation Act 1987
2806763	Washdyke Lagoon Government Purpose Reserve Wildlife Management	0.51	Government Purpose Reserve - s.22 Reserves Act 1977
2806910	Hook River Marginal Strip	0.54	Moveable Marginal Strip - s.24(1) & (2) Conservation Act 1987
2806911	Meyers Stream Marginal strip	11.71	Fixed Marginal Strip - s.24(3) Conservation Act 1987
2806913	Meyers Creek Marginal Strip	2.95	Moveable Marginal Strip - s.24(1) & (2) Conservation Act 1987
2806917	Waimate Creek Esplanade Reserve	0.01	Local Purpose Reserve - s.23 Reserves Act 1977
2807215	Waihao River Marginal Strip	1.07	Moveable Marginal Strip - s.24(1) & (2) Conservation Act 1987
2807410	Gravel Reserve Orari	2.02	Local Purpose Reserve - s.23 Reserves Act 1977
2807416	Gravel Reserve Chalmers Road	1.89	Local Purpose Reserve - s.23 Reserves Act 1977
2807440	Gravel Reserve Te Awa Road	1.91	Local Purpose Reserve - s.23 Reserves Act 1977
2807448	Conservation Area Orakipaoa Creekbed Orakipaoa	1.26	Stewardship Area - s.25 Conservation Act 1987
2807561	River Conservation Reserve Temuka River	2.48	Local Purpose Reserve - s.23 Reserves Act 1977
2807567	Temuka Marginal Strip	0.45	Moveable Marginal Strip - s.24(1) & (2) Conservation Act 1987
2807568	Opihi River Marginal Strip	3.76	Moveable Marginal Strip - s.24(1) & (2) Conservation Act 1987
2807571	Hae Hae Te Moana River Marginal Strip	0.75	Fixed Marginal Strip - s.24(3) Conservation Act 1987
2807572	Temuka Marginal Strip	1.92	Fixed Marginal Strip - s.24(3) Conservation Act 1987
2807574	Orari River Marginal Strip	0.70	Fixed Marginal Strip - s.24(3) Conservation Act 1987
2807575	Dobie Stream Marginal Strip	0.77	Moveable Marginal Strip - s.24(1) & (2) Conservation Act 1987
2807576	Conservation Area Arowhenua	0.09	Stewardship Area - s.25 Conservation Act 1987
2807578	Waihi River Marginal Strip	0.28	Moveable Marginal Strip - s.24(1) & (2) Conservation Act 1987
2807581	Orakipapo River Marginal Strip	0.23	Fixed Marginal Strip - s.24(3) Conservation Act 1987
2807933	Local Purpose Reserve Public Gardens Temuka	0.49	Local Purpose Reserve - s.23 Reserves Act 1977
2808410	Washdyke lagoon Wildlife Sanctuary Reserve	250.44	Government Purpose Reserve - s.22 Reserves Act 1977
2808813	Mawaro Creek Marginal Strip	0.06	Fixed Marginal Strip - s.24(3) Conservation Act 1987
2808814	Conservation Area Opihi Riverbed	13.57	Stewardship Area - s.25 Conservation Act 1987
2808818	Conservation Area McMasters Road	0.29	Stewardship Area - s.25 Conservation Act 1987
2808820	Hae Hae Te Moana River Conservation Reserve	43.71	Local Purpose Reserve - s.23 Reserves Act 1977
2808822	Gravel Reserve Te Moana Road	2.19	Local Purpose Reserve - s.23 Reserves Act 1977
2808828	Local Purpose Reserve Public Utility Winscombe	0.41	Local Purpose Reserve - s.23 Reserves Act 1977
2808829	Pioneer Park Conservation Area	125.06	Stewardship Area - s.25 Conservation Act 1987

Inventory of public conservation land and waters  
 Canterbury  
 Map table 7.19

NaPALIS ID	Protected Area Name	Area (ha)	Legal Description
2808830	Gravel Reserve Middle Valley Road	4.90	Local Purpose Reserve - s.23 Reserves Act 1977
2808831	Geraldine Community Buildings Reserve	0.08	Local Purpose Reserve - s.23 Reserves Act 1977
2808835	Gravel Reserve O'Neils Road	0.43	Local Purpose Reserve - s.23 Reserves Act 1977
2808836	Gravel Reserve Rapuwai Road	0.41	Local Purpose Reserve - s.23 Reserves Act 1977
2808837	Hae Hae Te Moana River Conservation Reserve	16.26	Local Purpose Reserve - s.23 Reserves Act 1977
2808839	Conservation Area Raincliff Stream	34.32	Stewardship Area - s.25 Conservation Act 1987
2808842	Gravel Reserve Graham Road	0.40	Local Purpose Reserve - s.23 Reserves Act 1977
2808843	Gravel Reserve Cricklewood Road	0.39	Local Purpose Reserve - s.23 Reserves Act 1977
2808844	Opihi River Marginal Strip	6.49	Moveable Marginal Strip - s.24(1) & (2) Conservation Act 1987
2808847	Conservation Area Kakahu River	0.18	Stewardship Area - s.25 Conservation Act 1987
2808848	Conservation Area Hae Hae Te Moana Riverbed	9.91	Stewardship Area - s.25 Conservation Act 1987
2808850	Conservation Area Opihi Riverbed	3.63	Stewardship Area - s.25 Conservation Act 1987
2808854	Conservation Area Opihi River Island	48.25	Stewardship Area - s.25 Conservation Act 1987
2808856	Gravel Reserve Connors Road	0.44	Local Purpose Reserve - s.23 Reserves Act 1977
2808857	Gravel Reserve Pahau Downs Road	0.44	Local Purpose Reserve - s.23 Reserves Act 1977
2808861	Gravel Reserve Limestone Valley Road	0.41	Local Purpose Reserve - s.23 Reserves Act 1977
2808862	Local Purpose Reserve Public Utility Glencraig	1.86	Local Purpose Reserve - s.23 Reserves Act 1977
2808863	Gravel Reserve Camp Valley Road	0.39	Local Purpose Reserve - s.23 Reserves Act 1977
2808864	Gravel Reserve Camp Valley Road	0.43	Local Purpose Reserve - s.23 Reserves Act 1977
2808866	Gravel Reserve Chamberlain Road	0.83	Local Purpose Reserve - s.23 Reserves Act 1977
2808867	Conservation Area Albury	4.39	Stewardship Area - s.25 Conservation Act 1987
2808868	Conservation Area Albury	0.23	Stewardship Area - s.25 Conservation Act 1987
2808869	Tengawai River Marginal Strip	0.10	Moveable Marginal Strip - s.24(1) & (2) Conservation Act 1987
2808870	Conservation Area Albury	0.18	Stewardship Area - s.25 Conservation Act 1987
2808887	Opihi River Marginal Strip	1.02	Moveable Marginal Strip - s.24(1) & (2) Conservation Act 1987
2808893	Tengawai River Marginal Strip	5.34	Fixed Marginal Strip - s.24(3) Conservation Act 1987
2808894	Opihi River Marginal Strip	2.27	Fixed Marginal Strip - s.24(3) Conservation Act 1987
2808895	German Creek Marginal Strip	3.01	Fixed Marginal Strip - s.24(3) Conservation Act 1987
2808896	Kakahu River Marginal Strip	6.27	Fixed Marginal Strip - s.24(3) Conservation Act 1987
2808907	Marginal Strip - Pareora River	0.47	Fixed Marginal Strip - s.24(3) Conservation Act 1987
2808908	Raincliff Historic Reserve	2.08	Historic Reserve - s.18 Reserves Act 1977
2808914	Conservation Area Chisolms Ford	3.53	Stewardship Area - s.25 Conservation Act 1987
2808915	River Conservation Reserve Opihi River	4.44	Local Purpose Reserve - s.23 Reserves Act 1977
2808916	German Creek Wildlife Management Reserve	4.06	Government Purpose Reserve - s.22 Reserves Act 1977
2808921	Conservation Area Sutherlands	1.46	Stewardship Area - s.25 Conservation Act 1987
2808925	Monavale Historic Reserve	1.89	Historic Reserve - s.18 Reserves Act 1977
2808926	Conservation Area Tengawai Riverbed	0.38	Stewardship Area - s.25 Conservation Act 1987
2808928	Conservation Area Tengawai Riverbed	6.67	Stewardship Area - s.25 Conservation Act 1987
2808931	Conservation Area Cave	8.81	Stewardship Area - s.25 Conservation Act 1987
2808942	Tasman Smith Scenic Reserve	31.55	Scenic Reserve - s.19(1)(a) Reserves Act 1977
2808945	Conservation Area Cave	0.12	Stewardship Area - s.25 Conservation Act 1987
2808948	Kakahu Bush Scenic Reserve	175.24	Scenic Reserve - s.19(1)(a) Reserves Act 1977
2808957	Conservation Area Raincliff Stream	3.40	Stewardship Area - s.25 Conservation Act 1987
2808958	Conservation Area Grafton	2.02	Stewardship Area - s.25 Conservation Act 1987
2808960	Conservation Area Monavale	0.27	Stewardship Area - s.25 Conservation Act 1987
2808961	Conservation Area Heatherleigh	0.70	Stewardship Area - s.25 Conservation Act 1987
2808962	Albury Marginal Strip	0.41	Fixed Marginal Strip - s.24(3) Conservation Act 1987
2808963	Rocky Gully Marginal Strip	0.34	Fixed Marginal Strip - s.24(3) Conservation Act 1987
2808964	Rocky Gully Marginal Strip	0.41	Fixed Marginal Strip - s.24(3) Conservation Act 1987
2808965	Rocky Gully Marginal Strip	0.95	Fixed Marginal Strip - s.24(3) Conservation Act 1987
2808966	Tengawai River Marginal Strip	2.25	Fixed Marginal Strip - s.24(3) Conservation Act 1987
2808967	Pareora River Marginal Strip	1.39	Fixed Marginal Strip - s.24(3) Conservation Act 1987
2808968	Cave Marginal Strip	1.11	Fixed Marginal Strip - s.24(3) Conservation Act 1987
2808969	Cave Marginal Strip	0.29	Fixed Marginal Strip - s.24(3) Conservation Act 1987
2808970	Rosewill Settlement Marginal Strip	12.67	Fixed Marginal Strip - s.24(3) Conservation Act 1987
2808971	Opihi River Marginal Strip	8.60	Fixed Marginal Strip - s.24(3) Conservation Act 1987
2808972	Opawa River Marginal Strip	2.02	Moveable Marginal Strip - s.24(1) & (2) Conservation Act 1987
2808973	Hae Hae Te Moana River Marginal Strip	1.97	Fixed Marginal Strip - s.24(3) Conservation Act 1987
2808974	Hae Hae Te Moana River Marginal Strip	3.50	Fixed Marginal Strip - s.24(3) Conservation Act 1987
2808978	Tengawai River Marginal Strip	0.91	Moveable Marginal Strip - s.24(1) & (2) Conservation Act 1987
2808979	Tengawai River Government Esplanade Reserve	0.11	Local Purpose Reserve - s.23 Reserves Act 1977
2809014	Kakahu River Marginal Strip	4.53	Moveable Marginal Strip - s.24(1) & (2) Conservation Act 1987
2809018	Hae Hae Te Moana River Conservation Reserve	8.23	Local Purpose Reserve - s.23 Reserves Act 1977
2809021	Talbot Forest Scenic Reserve	26.17	Scenic Reserve - s.19(1)(a) Reserves Act 1977
2809030	Conservation Area Waihi Riverbed	0.42	Stewardship Area - s.25 Conservation Act 1987
2809034	Conservation Area Geraldine Township	0.14	Stewardship Area - s.25 Conservation Act 1987
2809037	Raukapuka Area Office Conservation Area	0.71	Stewardship Area - s.25 Conservation Act 1987
2809039	Opihi River Conservation Reserve	16.08	Local Purpose Reserve - s.23 Reserves Act 1977
2809040	Waihi River Marginal Strip	0.01	Fixed Marginal Strip - s.24(3) Conservation Act 1987
3117807	Tramway Stream Marginal Strip (Moveable)	2.12	Moveable Marginal Strip - s.24(1) & (2) Conservation Act 1987



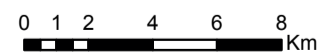


Map 7.19 Inventory of public conservation land and waters

Conservation Management Strategy  
Canterbury (Waitaha)

**Map 19 of 23**

Conservation unit data is current as of 31/10/2015



Inventory of public conservation land and waters  
 Canterbury  
 Map table 7.20

NaPALIS ID	Protected Area Name	Area (ha)	Legal Description
2807387	Lower Rangitata River Conservation Reserve	85.88	Local Purpose Reserve - s.23 Reserves Act 1977
2807388	Rangitata River Conservation Reserve	99.20	Local Purpose Reserve - s.23 Reserves Act 1977
2807393	Plantation Reserve Old Main South Road	2.22	Local Purpose Reserve - s.23 Reserves Act 1977
2807395	Rangitata River Conservation Reserve	54.72	Local Purpose Reserve - s.23 Reserves Act 1977
2807400	Rangitata River Conservation Reserve	12.70	Local Purpose Reserve - s.23 Reserves Act 1977
2807403	Rangitata River Conservation Reserve	7.52	Local Purpose Reserve - s.23 Reserves Act 1977
2807404	Rangitata River Conservation Reserve	15.44	Local Purpose Reserve - s.23 Reserves Act 1977
2807406	Rangitata River Conservation Reserve	186.77	Local Purpose Reserve - s.23 Reserves Act 1977
2807412	Rangitata River Conservation Reserve	6.49	Local Purpose Reserve - s.23 Reserves Act 1977
2807413	Rangitata River Conservation Reserve	18.93	Local Purpose Reserve - s.23 Reserves Act 1977
2807414	Rangitata River Conservation Reserve	182.76	Local Purpose Reserve - s.23 Reserves Act 1977
2807420	Rangitata River Conservation Reserve	16.31	Local Purpose Reserve - s.23 Reserves Act 1977
2807421	Rangitata River Conservation Reserve	71.70	Local Purpose Reserve - s.23 Reserves Act 1977
2807423	Rangitata River Conservation Reserve	9.84	Local Purpose Reserve - s.23 Reserves Act 1977
2807424	Rangitata River Conservation Reserve	13.19	Local Purpose Reserve - s.23 Reserves Act 1977
2807426	Rangitata River Conservation Reserve	68.71	Local Purpose Reserve - s.23 Reserves Act 1977
2807428	Rangitata River Conservation Reserve	38.87	Local Purpose Reserve - s.23 Reserves Act 1977
2807429	Conservation Area Rangitata Riverbed Rangitata Huts	15.95	Stewardship Area - s.25 Conservation Act 1987
2807430	Rangitata River Conservation Reserve	13.71	Local Purpose Reserve - s.23 Reserves Act 1977
2807441	Conservation Area Orari Riverbed Bridgeview	3.78	Stewardship Area - s.25 Conservation Act 1987
2807447	Spider Lagoon Conservation Area	15.46	Stewardship Area - s.25 Conservation Act 1987
2807557	Milford Lagoon Conservation Area	80.01	Stewardship Area - s.25 Conservation Act 1987
2807570	Conservation Area Milford Lagoon	0.39	Stewardship Area - s.25 Conservation Act 1987
2807573	Longbeach Marginal Strip	1.03	Fixed Marginal Strip - s.24(3) Conservation Act 1987
2807580	Rangitata River Marginal Strip	1.27	Fixed Marginal Strip - s.24(3) Conservation Act 1987
2807583	Orari River Marginal Strip	0.35	Fixed Marginal Strip - s.24(3) Conservation Act 1987



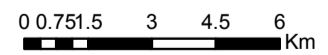


Map 7.20 Inventory of public conservation land and waters

Conservation Management Strategy  
 Canterbury (Waitaha)

**Map 20 of 23**

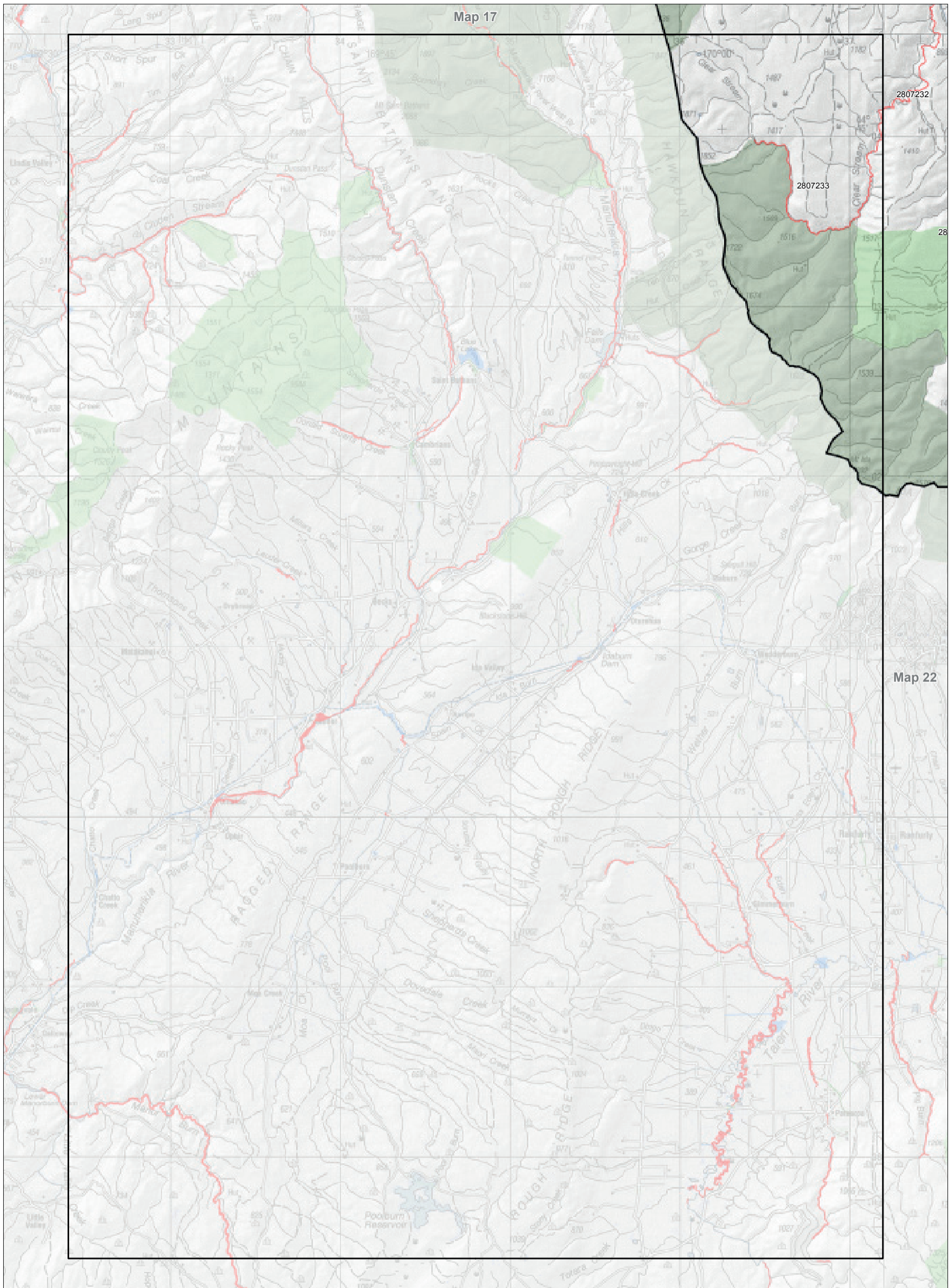
*Conservation unit data is current as of 31/10/2015*





Inventory of public conservation land and waters  
Canterbury  
Map table 7.21

NaPALIS ID	Protected Area Name	Area (ha)	Legal Description
2807233	Clear Stream Marginal Strip	25.87	Fixed Marginal Strip - s.24(3) Conservation Act 1987

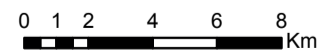


Map 7.21 Inventory of public conservation land and waters

Conservation Management Strategy  
Canterbury (Waitaha)

**Map 21 of 23**

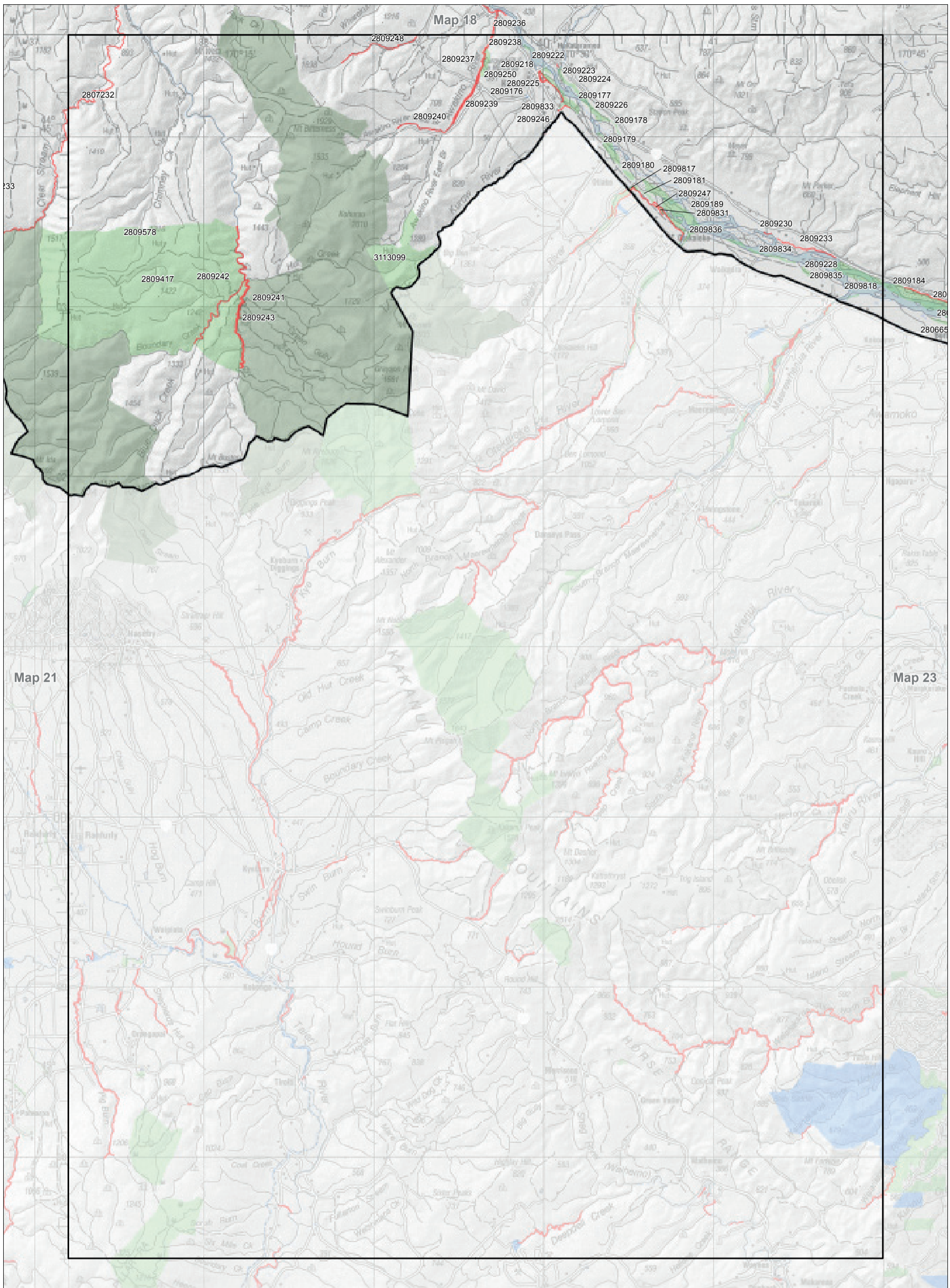
*Conservation unit data is current as of 31/10/2015*



Inventory of public conservation land and waters  
 Canterbury  
 Map table 7.22

NaPALIS ID	Protected Area Name	Area (ha)	Legal Description
2807232	Otematata River Marginal Strip	42.87	Fixed Marginal Strip - s.24(3) Conservation Act 1987
2809176	Kurow Scenic Reserve	1.81	Scenic Reserve - s.19(1)(b) Reserves Act 1977
2809177	Conservation Area Lower Waitaki Riverbed	47.50	Stewardship Area - s.25 Conservation Act 1987
2809178	Conservation Area Waitaki River Bed	8.62	Stewardship Area - s.25 Conservation Act 1987
2809179	Conservation Area Waitaki River Bed	75.11	Stewardship Area - s.25 Conservation Act 1987
2809180	Conservation Area Waitaki River Bed	21.77	Stewardship Area - s.25 Conservation Act 1987
2809181	Conservation Area Waitaki River Bed	17.72	Stewardship Area - s.25 Conservation Act 1987
2809189	Conservation Area Lower Waitaki Riverbed	260.30	Stewardship Area - s.25 Conservation Act 1987
2809218	Lower Waitaki River Marginal Strip	8.52	Moveable Marginal Strip - s.24(1) & (2) Conservation Act 1987
2809222	Conservation Area Lower Waitaki Riverbed	8.99	Stewardship Area - s.25 Conservation Act 1987
2809223	Conservation Area Lower Waitaki Riverbed (Kurow Island)	11.21	Stewardship Area - s.25 Conservation Act 1987
2809224	Conservation Area Lower Hakatamea Riverbed	36.77	Stewardship Area - s.25 Conservation Act 1987
2809225	Conservation Area Lower Waitaki Riverbed	43.86	Stewardship Area - s.25 Conservation Act 1987
2809226	Conservation Area Waitaki River Bed	70.74	Stewardship Area - s.25 Conservation Act 1987
2809228	Conservation Area Waitaki River Bed	14.16	Stewardship Area - s.25 Conservation Act 1987
2809230	Waitaki River Marginal Strip	0.91	Fixed Marginal Strip - s.24(3) Conservation Act 1987
2809233	Waitaki River Marginal Strip	7.48	Fixed Marginal Strip - s.24(3) Conservation Act 1987
2809237	Awakino River Marginal Strip	16.24	Fixed Marginal Strip - s.24(3) Conservation Act 1987
2809238	Awakino River Marginal Strip	7.39	Fixed Marginal Strip - s.24(3) Conservation Act 1987
2809239	Awakino River Marginal Strip	31.12	Fixed Marginal Strip - s.24(3) Conservation Act 1987
2809240	Awakino River Marginal Strip	9.70	Fixed Marginal Strip - s.24(3) Conservation Act 1987
2809241	Mt Buster Marginal Strip	26.75	Fixed Marginal Strip - s.24(3) Conservation Act 1987
2809242	Mt Buster Marginal Strip	23.37	Fixed Marginal Strip - s.24(3) Conservation Act 1987
2809243	Mt Buster Marginal Strip	26.06	Fixed Marginal Strip - s.24(3) Conservation Act 1987
2809246	Kurow Creek Marginal Strip	3.48	Fixed Marginal Strip - s.24(3) Conservation Act 1987
2809247	Waitaki River Marginal Strip	13.76	Fixed Marginal Strip - s.24(3) Conservation Act 1987
2809248	Awahokomo Creek Marginal Strip	10.92	Fixed Marginal Strip - s.24(3) Conservation Act 1987
2809250	Sunny Peaks Conservation Area	51.00	Stewardship Area - s.25 Conservation Act 1987
2809417	Mount Ida Conservation Area (ex Mt Ida Syndicate)	8450.37	Stewardship Area - s.25 Conservation Act 1987
2809578	Oteake Conservation Park	64677.82	Conservation Park - s.19 Conservation Act 1987
2809817	Conservation Area - Otiake River	3.48	Stewardship Area - s.25 Conservation Act 1987
2809818	Conservation Area - Maerewhenua River	7.99	Stewardship Area - s.25 Conservation Act 1987
2809831	Conservation Area - Waitaki River	8.89	Stewardship Area - s.25 Conservation Act 1987
2809833	Conservation Area - Kurow River	0.41	Stewardship Area - s.25 Conservation Act 1987
2809834	Conservation Area - Waitaki River	59.82	Stewardship Area - s.25 Conservation Act 1987
2809835	Conservation Area - Waitaki River	2.35	Stewardship Area - s.25 Conservation Act 1987
2809836	Conservation Area - Waitaki / Otekaieke Rivers	34.48	Stewardship Area - s.25 Conservation Act 1987
3113099	Conservation Area - Oteake Conservation Park (Proposed Addition)	790.92	Stewardship Area - s.25 Conservation Act 1987



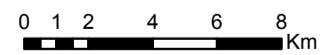


Map 7.22 Inventory of public conservation land and waters

Conservation Management Strategy  
Canterbury (Waitaha)

**Map 22 of 23**

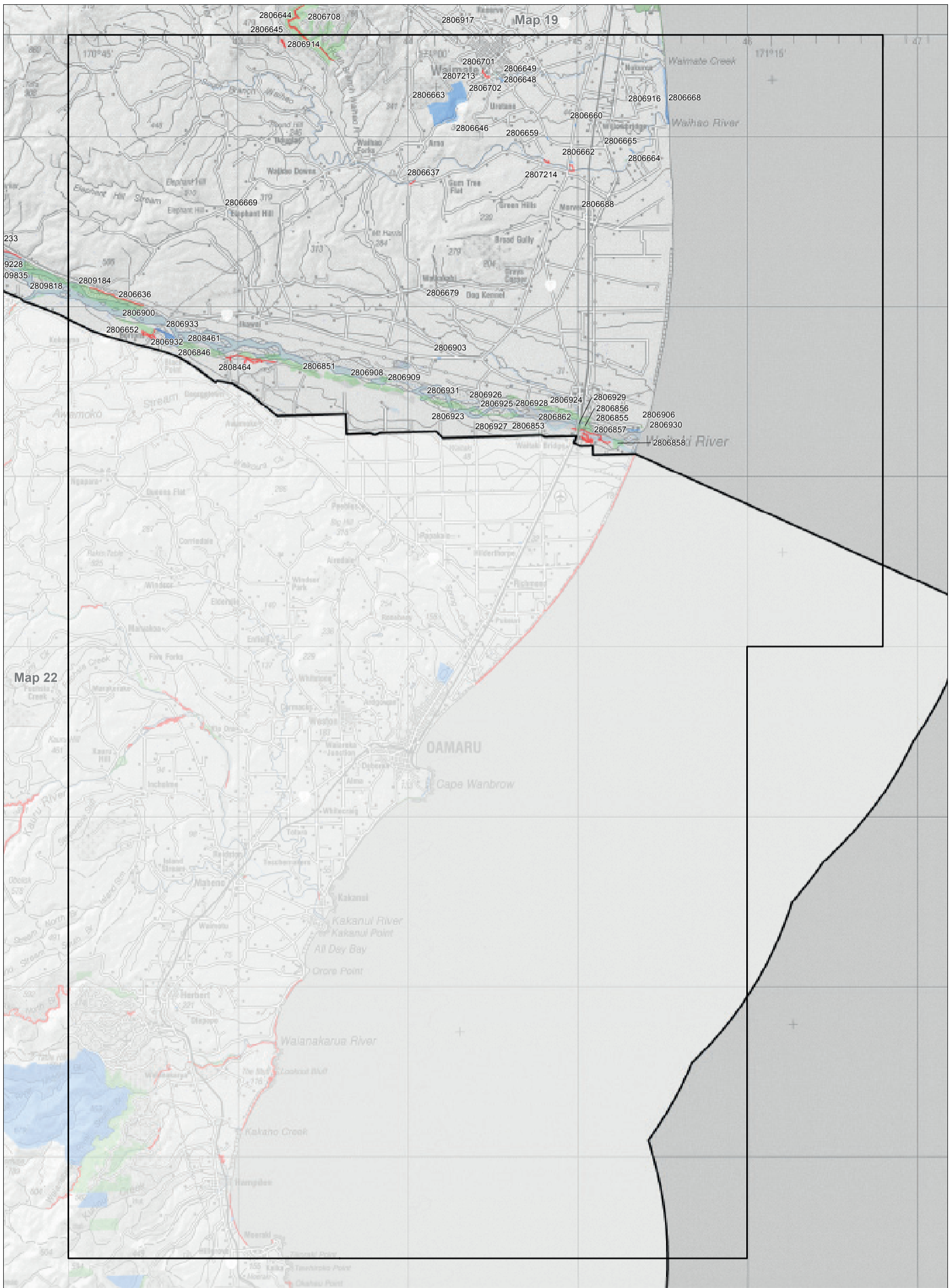
*Conservation unit data is current as of 31/10/2015*



Inventory of public conservation land and waters  
 Canterbury  
 Map table 7.23

NaPALIS ID	Protected Area Name	Area (ha)	Legal Description
2806636	Waitaki River Marginal Strip	6.86	Fixed Marginal Strip - s.24(3) Conservation Act 1987
2806637	Waihao River Marginal Strip	0.77	Fixed Marginal Strip - s.24(3) Conservation Act 1987
2806646	Quarry Reserve Arno	7.86	Local Purpose Reserve - s.23 Reserves Act 1977
2806648	River Conservation Reserve Waimate	3.36	Local Purpose Reserve - s.23 Reserves Act 1977
2806649	River Conservation Reserve Waimate	0.50	Local Purpose Reserve - s.23 Reserves Act 1977
2806652	Conservation Area Waitaki Riverbed	53.81	Stewardship Area - s.25 Conservation Act 1987
2806659	Gravel Reserve Waihao Back Road	2.05	Local Purpose Reserve - s.23 Reserves Act 1977
2806660	Gravel Reserve Main South Road	2.02	Local Purpose Reserve - s.23 Reserves Act 1977
2806662	River Conservation Reserve Waihao River	2.36	Local Purpose Reserve - s.23 Reserves Act 1977
2806663	Studholme Bush Scenic Reserve	281.60	Scenic Reserve - s.19(1)(a) Reserves Act 1977
2806664	Conservation Area Waiho Riverbed	1.41	Stewardship Area - s.25 Conservation Act 1987
2806665	Cruickshanks Pond Government Purpose Reserve Wildlife Management	4.14	Government Purpose Reserve - s.22 Reserves Act 1977
2806668	Waihao Box Government Purpose Reserve Wildlife Management	35.11	Government Purpose Reserve - s.22 Reserves Act 1977
2806669	Recreation Reserve Elephant Hill	0.92	Recreation Reserve - s.17 Reserves Act 1977
2806679	Water Race Reserve Waikakahi	0.84	Local Purpose Reserve - s.23 Reserves Act 1977
2806688	Morven Government Purpose Reserve General Government Buildings	0.17	Government Purpose Reserve - s.22 Reserves Act 1977
2806701	Conservation Area Waimate Creek	1.62	Stewardship Area - s.25 Conservation Act 1987
2806702	River Conservation Reserve Waimate Creek	0.41	Local Purpose Reserve - s.23 Reserves Act 1977
2806846	Conservation Area - Black Point Railway Siding	0.45	Stewardship Area - s.25 Conservation Act 1987
2806851	Conservation Area Waitaki River Wilson Rd	85.92	Stewardship Area - s.25 Conservation Act 1987
2806853	Conservation Area - Steward Road Dairy Factory	0.75	Stewardship Area - s.25 Conservation Act 1987
2806855	Conservation Area - Waitaki Bridge	22.17	Stewardship Area - s.25 Conservation Act 1987
2806856	Conservation Area - Waitaki Bridge	12.37	Stewardship Area - s.25 Conservation Act 1987
2806857	Marginal Strip - Waitaki River	2.69	Fixed Marginal Strip - s.24(3) Conservation Act 1987
2806858	Conservation Area - Waitaki River	27.81	Stewardship Area - s.25 Conservation Act 1987
2806862	Marginal Strip - Waitaki River	0.93	Fixed Marginal Strip - s.24(3) Conservation Act 1987
2806900	Conservation Area - Waitaki Riverbed	4.51	Stewardship Area - s.25 Conservation Act 1987
2806903	Gravel Reserve Ikawai Road	2.01	Local Purpose Reserve - s.23 Reserves Act 1977
2806906	River Conservation Reserve Waitaki River	6.27	Local Purpose Reserve - s.23 Reserves Act 1977
2806908	Conservation Area Waitaki Riverbed	148.91	Stewardship Area - s.25 Conservation Act 1987
2806909	Conservation Area Waitaki Riverbed	21.24	Stewardship Area - s.25 Conservation Act 1987
2806914	Stony Creek Marginal Strip	3.22	Moveable Marginal Strip - s.24(1) & (2) Conservation Act 1987
2806916	Sir Charles Stream Government Esplanade Reserve	0.25	Local Purpose Reserve - s.23 Reserves Act 1977
2806923	Conservation Area Waitaki Riverbed	55.90	Stewardship Area - s.25 Conservation Act 1987
2806924	Conservation Area Waitaki Riverbed	143.11	Stewardship Area - s.25 Conservation Act 1987
2806925	Conservation Area Waitaki Riverbed	15.41	Stewardship Area - s.25 Conservation Act 1987
2806926	Conservation Area Waitaki Riverbed	8.42	Stewardship Area - s.25 Conservation Act 1987
2806927	Conservation Area Waitaki Riverbed	5.04	Stewardship Area - s.25 Conservation Act 1987
2806928	Conservation Area Waitaki Riverbed	15.71	Stewardship Area - s.25 Conservation Act 1987
2806929	Conservation Area Waitaki Riverbed	1.32	Stewardship Area - s.25 Conservation Act 1987
2806930	Conservation Area Waitaki Huts	2.47	Stewardship Area - s.25 Conservation Act 1987
2806931	Waitaki River Bed Crown Land	32.86	Stewardship Area - s.25 Conservation Act 1987
2806932	Waitaki River Marginal Strip	18.80	Moveable Marginal Strip - s.24(1) & (2) Conservation Act 1987
2806933	Black Point Government Purpose Reserve Wildlife Management	54.53	Government Purpose Reserve - s.22 Reserves Act 1977
2807213	Waimate Creek Marginal Strip	2.27	Moveable Marginal Strip - s.24(1) & (2) Conservation Act 1987
2807214	Waihao River Marginal Strip	2.93	Moveable Marginal Strip - s.24(1) & (2) Conservation Act 1987
2808461	Conservation Area - Waitaki River	11.08	Stewardship Area - s.25 Conservation Act 1987
2808464	Conservation Area - Waitaki River	180.39	Stewardship Area - s.25 Conservation Act 1987
2809184	Conservation Area Lower Waitaki Riverbed	431.43	Stewardship Area - s.25 Conservation Act 1987





Map 7.23 Inventory of public conservation land and waters

Conservation Management Strategy  
Canterbury (Waitaha)

**Map 23 of 23**

Conservation unit data is current as of 31/10/2015

