



---

**Orange-fronted parakeet/Kākāriki Karaka**  
**Strategic Work Plan 2020 -2021**

---

**Tasks required for:**

- **Business plan year 2020-21**

## Strategic Work Plan Goal: Prevent extinction

### Desired Outcomes

#### Short-term

- 1) Secure current population
- 2) A secure, genetically robust population of Orange-fronted parakeet/ kākāriki karaka in captivity that is large enough to keep up with the demand for released birds.

#### Medium to long-term

- 1) Increase the number of secure Orange-fronted parakeet/ kākāriki karaka populations on islands and mainland sites
- 2) Change the threat status from Nationally Critical

#### Measures of success

- 1) The principles of Mātauranga Māori are integral to the management decisions and direction of Kākāriki karaka /Orange-fronted parakeet recovery
- 2) Blumine Island population secure from threats
- 3) Work on understanding of the Orange-fronted parakeet/kākāriki karaka population's trend and limiting factors on Blumine Island and the mainland
- 4) Work on Clear understanding of how to effectively manage mainland Orange-fronted parakeet/kākāriki karaka populations from pest threats
- 5) Orange-fronted parakeet/kākāriki karaka in captivity, and sufficient breeding, holding, and release aviaries to support their output

## Introduction

This strategic work plan supersedes the previous strategic document leading Orange-fronted parakeet/kākāriki karaka work programming - the "Orange-fronted parakeet Rescue Strategy November 2017". The goal for Orange-fronted parakeet/kākāriki karaka recovery work has now been changed from:

Rescue strategy Goal: ***"To ensure the survival of the Orange-fronted parakeet, and to establish multiple, self-sustaining sub-populations in the wild "***

To

Strategic work Plan: ***"Prevent extinction"***

This has been changed to reflect the critical survival situation the Orange-fronted parakeet/kākāriki karaka is currently in. The 2019 Recovery Group meeting recommended this change to focus the immediate work programme's direction on protecting and enhancing the genetic diversity of the species which was considered the most important driver to prevent its extinction.

This strategic work plan strategy is a revision of the previous work plan which provided for three work plan scenarios. This revised plan has only one scenario as IVL funding is no longer an option:

1. 2020 – 2021 work programme to be built into future Business Plans

This work plan has been developed around 5 main work streams to achieve the goal:

- a. Optimised monitoring of existing populations and habitats
- b. Adaptive protection of existing populations and habitats
- c. Collect wild eggs for breeding in captivity
- d. Require additional aviary space at Isaac's and other facilities, along with long-term security of aviary space.
- e. Translocations

Each of these five work streams have equal priority. Within each work stream are priorities based on location. A variety of tasks are required in each of these work streams.

In the priority table the operations team will focus on the highest priority site within each work stream unless the task indicates that other sites will need to be addressed.

Each of the work streams requires that a series of work tasks are undertaken. Each task has a required performance measure and audit measure and accountability which will be used by the Recovery Group to track progress on a regular and ongoing basis.

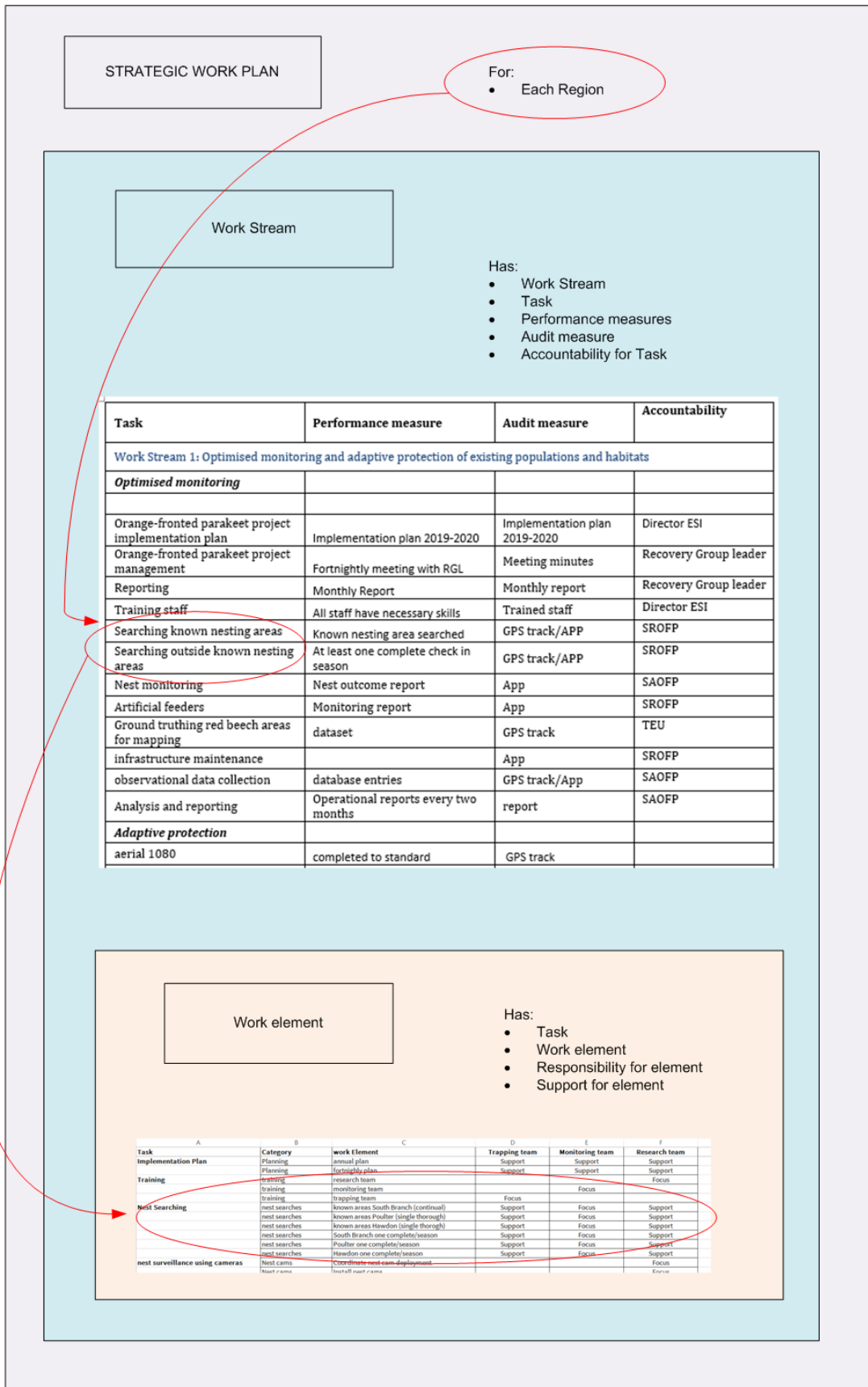
Specific task elements are provided in Appendix 1 as a guide to completing a comprehensive implementation plan. This Task list highlights which team has primary responsibility for these tasks and teams which support the task.

The operations team are required to set in place an implementation plan to ensure these tasks are undertaken and reported on.

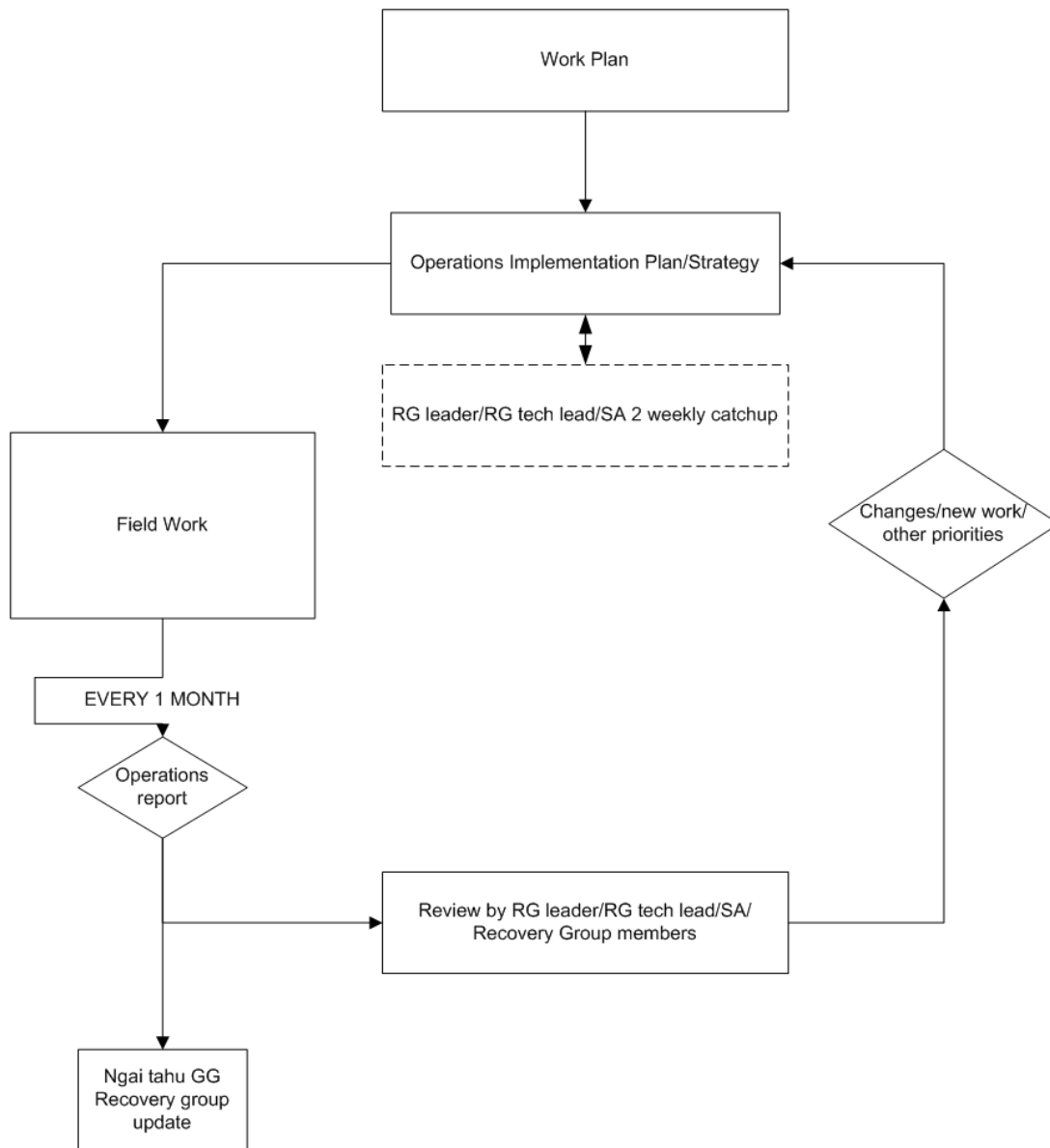
<b>Priority Work 2021</b>	Optimised monitoring	Adaptive protection	Collect wild eggs for captive breeding	Additional aviary space	Translocations
<b>Priorities within priority work</b>	A South Branch Hurunui	South Branch Hurunui Rat/cats/mustelid/possum	Poulter Valley	Orana Park	Brook Sanctuary (Isaacs and Orana birds)
	B Poulter	Poulter Reduced effort	Blumine Island	Isaacs	Maungatautari (Auckland Zoo and Mt Bruce birds)
	C Blumine	Blumine Biosecurity covered by NSI	South Branch Hurunui	Auckland Zoo	South Branch Hurunui
	D Hawdon	Hawdon	Hawdon Valley	Mt Bruce	
	E			Rainbow	

\*New sites exploration – Hope Kiwi, Cox

# Structure of this Strategic Work Plan



An ongoing update and review process between the Recovery Group and operations teams will be put in place to track work progress and change work directions as needed – this whole process will look like this:



## A summary of the strategic work plan

### Work Plan 2020 – 2021

Northern South Island Region will need to reallocate existing biodiversity funds to:

- Manage the monitoring of Brook Sanctuary translocation
- Increase biosecurity work on Blumine Island

- Undertake a research and monitoring programme on Blumine Island

Eastern South Island Region will use its currently allocated funds to:

- Run predator control in South Branch Hurunui, Poulter and Hawdon
- Undertake Kākāriki Karaka monitoring in all mainland sites
- Manage and coordinate partnership relationships necessary for the programme

Terrestrial Science Unit will use its currently allocated funds to:

- Complete science project and advice work as per Key Accountabilities document (DOCCM-6053874)



## 2020-2021 Work Plan Tasks

Released under the Official Information Act



## 2020-2021 Work Plan

The required work tasks are:

### Tasks Required for each Work stream – Eastern South Island Business Plan

Task	Performance measure	Audit measure	Accountability
<b>Work Stream 1: Optimised monitoring and adaptive protection of existing populations and habitats</b>			
<b>Optimised monitoring</b>			
Orange-fronted parakeet project implementation plan	Implementation plan 2019-2020	Implementation plan 2019-2020	Operation Manager Rangiora
Orange-fronted parakeet project management	Fortnightly meeting with RGL	Fortnightly Meeting minutes	Recovery Group leader
Reporting	Monthly Report	Monthly report	Recovery Group leader
Training staff	All staff have necessary skills	Trained staff	Director ESI
Nest Searching	All areas well searched	GPS track/APP	SROFP
Nest monitoring	Nest outcome report	App	SAOFP
Artificial feeders	Monitoring report	App	SROFP
Data management	Data collection and storage meets OFP Datamap requirements	App/Databases	SAOFP
Monitoring	Data collection and storage meets OFP Datamap requirements	App/ translocation reports/databases	SROFP
infrastructure maintenance		App	SROFP
<b>Adaptive protection</b>			
Aerial 1080 planning	completed to SOP standard	Signed consent	SROFP
Aerial 1080 operations	completed to SOP standard	GPS track/Pestlink report	SROFP
Trapping	Data collection and storage meets OFP Datamap requirements	WTL	SROFP
Poison bait station consent	completed to SOP standard	Signed consent	SROFP
Poison bait station operations	Run as required by best practice	Pestlink report	SROFP
Tracking tunnels	quarterly Feb, May, Aug, Nov and mustelids Nov,Jan	Database	SROFP
Nest protection	nest tree protected	App /WTL	SROFP
Beech seedfall	quarterly Feb, May, Aug, Nov	Database	SROFP
Pest detection dogs	Areas searched	GPS tracking/search report	SROFP
<b>Work stream 2: Collect wild eggs for captive breeding</b>			
Collect eggs for captive breeding	eggs successfully harvested and delivered	App	SROFP
Support TICWT	Birds raised for release	Translocation report	SROFP
<b>Work Stream 3: Additional Aviary Space</b>			
Formal arrangement made with The Isaac Conservation and Wildlife Trust to secure aviary tenure and increase aviary capacity	agreement signed	agreement	DESI
Aviary construction	aviaries in place		SROFP

Task	Performance measure	Audit measure	Accountability
<b>Work Stream 4: Population Viability Analysis</b>			
Tammy Steeves to coordinate		Completed report	
<b>Work Stream 5: Translocations</b>			
Project management	Translocation form 11a signed off	Translocation form 11a	SROFP/RGL
Translocation	successful translocation	translocation report/APP/database	SROFP/RGL

### Tasks Required for each Work stream – Northern South Island Business Plan

Task	Performance measure	Audit measure	Accountability
<b>Work Stream 1: Optimised monitoring and adaptive protection of existing populations and habitats</b>			
<b>Optimised monitoring</b>			
Orange-fronted parakeet project implementation plan	Implementation plan 2020-21	Implementation plan 2020-21	Operations Manager Picton
Orange-fronted parakeet project management	Fortnightly meeting with RGL	Fortnightly meeting minutes	
Training staff	All staff have necessary skills	Trained staff	
Reporting	Monthly Report	Monthly report	Recovery Group leader
Nest Searching	All areas well searched	GPS track/APP	
Nest monitoring	Nest outcome report	App	
Artificial feeders	Monitoring report	App	
Data management	Data collection and storage meets OFP Datamap requirements	App/Databases	
Monitoring	Data collection and storage meets OFP Datamap requirements	App/ translocation reports/databases	
infrastructure maintenance	Bivvy installation		
	Surveillance infrastructure		
<b>Adaptive protection</b>			
Trap maintenance	every trap set off and checked once a year	WTL	
Biosecurity checks	checked every month	WTL	
Island biosecurity plan	Island biosecurity plan completed	Plan	
Island fire plan	Island fire plan completed	Plan	
YCP surveillance	no YCP	GPS track	
<b>Work stream 2: Collect wild eggs for captive breeding</b>			

<b>Task</b>	<b>Performance measure</b>	<b>Audit measure</b>	<b>Accountability</b>
nest searching	nest located	App	
collect clutch	eggs successfully harvested	App	
transport to Isaacs	eggs successfully delivered	App	
<b>Work Steam 5: Translocations</b>			
Orange-fronted parakeet project management	2 monthly meeting RGL	2 monthly report	
Translocation	successful translocation	translocation report/APP/database	SROFP/RGL

## Appendix 1 Specific Task elements and work team responsibility

		Team Responsibility			
Task category	work Element	Trapping	Monitoring	Research	NSI Operations
<b>Implementation Plan</b>					
Planning	annual plan		Support	Support	
Planning	fortnightly plan	Support	Support	Support	
<b>Training</b>					
research team				Focus	
monitoring team			Focus		
trapping team		Focus			
Blumine Island					Focus
Volunteer programme	Shortlist applicants		Focus		
Volunteer programme	Communicate with volunteers		Focus		
Volunteer programme	Complete paperwork		Focus		
Volunteer programme	Induction (H & S)		Focus		
Volunteer programme	Prepare field gear		Focus		
Volunteer programme	Assist with groceries		Focus		
Volunteer programme	Field training		Focus		
Volunteer programme	Log hours		Focus		
Research students	Shortlist applicants			Focus	
Research students	Communicate with students			Focus	
Research students	Complete paperwork			Focus	
Research students	Induction (H & S)			Focus	
Research students	Prepare field gear			Focus	
Research students	Assist with groceries			Focus	
Research students	Field training			Focus	
Research students	Log hours			Focus	
<b>Nest Searching</b>					
nest searches	known areas South Branch (continual)	Support	Focus	Support	
nest searches	known areas Poulter (single thorough)	Support	Focus	Support	
nest searches	known areas Hawdon (single thorough)	Support	Focus	Support	
nest searches	South Branch one complete/season	Support	Focus	Support	
nest searches	Poulter one complete/season	Support	Focus	Support	
nest searches	Hawdon one complete/season	Support	Focus	Support	
<b>Nest Monitoring</b>					
Nest cams	Coordinate nest cam deployment			Focus	
Nest cams	Install nest cams			Focus	

		Team Responsibility			
Task category	work Element	Trapping	Monitoring	Research	NSI Operations
Nest cams	Modify nest cams			Focus	
Nest cams	Change SDcards		Support	Focus	
Nest cams	Change batteries		Support	Focus	
Nests	Search for nests		Focus	Support	
Nests	Observe nests from the ground		Focus		
Nests	Protect nests		Focus		
Nests	Radio-track fledglings		Focus	Support	
Nests	Inspect nest cavities		Focus	Support	
Nests	Harvest eggs/chicks		Focus	Support	
Nests	Band fledglings		Support	Focus	
Nests	Install transmitters on fledglings		Support	Focus	
<b>Artificial feeders</b>					
Feeder cams	Coordinate feeder cam deployment			Focus	
Feeder cams	Install feeder cams			Focus	
Feeder cams	Modify feeder cams			Focus	
Feeder cams	Change SDcards		Support	Focus	
Feeder cams	Change batteries		Support	Focus	
Feeders	Coordinate feeder deployment			Focus	
Feeders	Install feeders			Focus	
Feeders	Modify feeders			Focus	
Feeders	Check feeders		Focus	Support	
Feeders	Refill feeders		Focus	Support	
Feeders	Change feeder batteries		Support	Focus	
<b>Data management</b>					
Data management	Develop protocols for recording parakeet data			Focus	
Data management	Data entry	Focus	Focus		
Data management	Data analysis			Focus	
Data management	Develop protocols for recording GPS data			Focus	
Data management	Sync GPS data	Focus	Focus	Support	
Data management	Generate maps		Support	Focus	
Data management	Store photos and videos			Focus	
Data management	Distribute photos and videos			Focus	
Data management	Review feeder cam photos		Focus		
Data management	Review nest cam videos		Focus		
Data management	Review trunk cam videos			Focus	
Data management	Analyse feeder cam data			Focus	
Data management	Analyse nest cam data			Focus	

		Team Responsibility			
Task category	work Element	Trapping	Monitoring	Research	NSI Operations
Data management	Analyse trunk cam data			Focus	
<b>Monitoring</b>					
Radio tracking	Radio track released birds		Focus	Support	
General observations	Recording observations	Support	Focus	Support	
Surveys	Coordinate population surveys		Support	Focus	
Surveys	Conduct population surveys		Focus	Support	
Surveys	Assess habitat suitability		Support	Focus	
Census	Complete island census at least once a year		Support	Support	Focus
Monitoring parakeets	Search for parakeets	Support	Focus	Support	
Monitoring parakeets	Conduct playback		Focus	Support	
Monitoring parakeets	Record tracklogs	Support	Focus	Support	
Monitoring parakeets	Record parakeet waypoints	Support	Focus	Support	
Monitoring parakeets	Collect dead parakeets		Focus	Support	
Monitoring parakeets	Send dead parakeets for autopsy		Support	Focus	
<b>Aerial 1080 operations</b>					
1080	Managing drop				
1080	Clear tracks of pellets	Focus	Support		
1080	Install bait and carcass stations	Focus			
1080	Monitor bait and carcass stations	Focus			
1080	Repair fences	Focus	Support		
1080	Check signs	Focus	Support		
<b>Trapping</b>					
mustelids and rats	Maintain trap lines	Focus	Support		
mustelids and rats	Audit traps	Focus			
mustelids and rats	Trap upgrades	Focus			
mustelids and rats	Trap checks - Hawdon	Focus	Support		
mustelids and rats	Trap checks - Poulter	Focus	Support		
mustelids and rats	Trap checks - South Branch	Focus	Support		
cats	Maintain trap lines	Focus	Support	Support	
cats	Maintain traps	Focus	Support	Support	
cats	Trap upgrades	Focus	Support	Support	
cats	Trap checks - Hawdon	Focus	Support	Support	
cats	Trap checks - Poulter	Focus	Support	Support	
cats	Trap checks - South Branch	Focus	Support	Support	
Traps	Install traps near nests		Focus		
Traps	Check traps near nests	Support	Focus		
Traps	Install traps near feeders		Focus		

		Team Responsibility			
Task category	work Element	Trapping	Monitoring	Research	NSI Operations
Traps	Check traps near feeders	Support	Focus		
Trunk cams	Coordinate trunk cam deployment			Focus	
Trunk cams	Install trunk cams			Focus	
Trunk cams	Modify trunk cams			Focus	
Trunk cams	Change SDcards			Focus	
Trunk cams	Change batteries			Focus	
Reporting	trapping and TT indices				
<b>Tracking tunnels</b>					
Quarterly TT	TT 4-day checks	Focus	Support	Support	
Mustelid TT	TT 7-day check	Focus	Support	Support	
analyse TT cards	analyse TT cards	Focus			
<b>Poison bait stations</b>					
Rodents	bait station maintenance	Focus	Focus		
Rodents	bait replenishment	Focus	Focus		
Possums	bait station maintenance	Focus	Focus		
Possums	bait replenishment	Focus	Focus		
<b>Nest protection</b>					
protect nest tree	tinning	Focus	Support	Support	
protect nest tree	nest tree local trap setup	Focus	Support	Support	
protect nest tree	nest tree trap checks	Focus	Support	Support	
<b>Beech seed fall</b>					
Beech seed fall	Monitor beech status	Focus	Support	Support	
Beech seed fall	Collect seed from seed fall traps	Focus	Support	Support	
<b>Collect eggs for captive breeding</b>					
Harvest wild nests	collect clutches				
Harvest wild nests	transport clutches				
<b>Support TICWT</b>					
ICWT	Deliver foliage	Support	Focus		
ICWT	Monitor captive pairs/flocks		Support		
ICWT	Check feeders		Support		
ICWT	Check nest boxes		Support		
<b>Translocations</b>					
Preparation	Site inspections		Focus	Support	
Translocation	Monitoring released birds		Focus	Support	
Translocation	Artificial feeding stations		Focus	Support	
Translocation	Banding birds for release		Support	Support	
Translocation	Attaching transmitters for release		Focus	Support	
Translocation	Managing birds on site pre release		Focus	Support	
Translocations	Assemble aviaries	Support	Focus		
Translocations	Fill aviaries	Support	Focus		
Translocations	Capture parakeets for release		Support	Support	

		Team Responsibility			
Task category	work Element	Trapping	Monitoring	Research	NSI Operations
Translocations	Prepare band combinations			Focus	
Translocations	Transfer parakeets for release		Focus	Support	
Translocations	Radio-track released parakeets		Focus	Support	
<b>Biosecurity</b>					
Biosecurity checks	kill trapping				Focus
Biosecurity checks	chew sticks				Focus
Biosecurity checks	tracking tunnels				Focus
Biosecurity checks	pest camera checks				
Biosecurity checks	rodent and mustelid dog check				
Biosecurity checks	Yellow-crowned parakeet surveillance				
Biosecurity checks	visitor education monitoring				Focus
<b>Other</b>					
Infrastructure	Cut and stack firewood	Support	Support	Support	
Infrastructure	Repair tracks	Support	Support	Support	
Infrastructure	Clean and maintain huts	Support	Support	Support	
Social media	Write social media updates	Support	Focus	Support	
Social media	Post social media updates		Focus		
Social media	Capture photos	Support	Support	Support	