

NOTES

1. Confirm set out of all dimensions on site prior to commencing work.
2. Do not scale off drawings.
3. Traffic Engineer to review and confirm carpark dimensions, queuing space and turning circles etc are as required.
4. Civil Engineer to confirm the proposed carpark drainage can be connected into the existing stormwater system.
5. Confirm locations of services on site prior to commencing works.

MATERIALS PALETTE

PLANTING

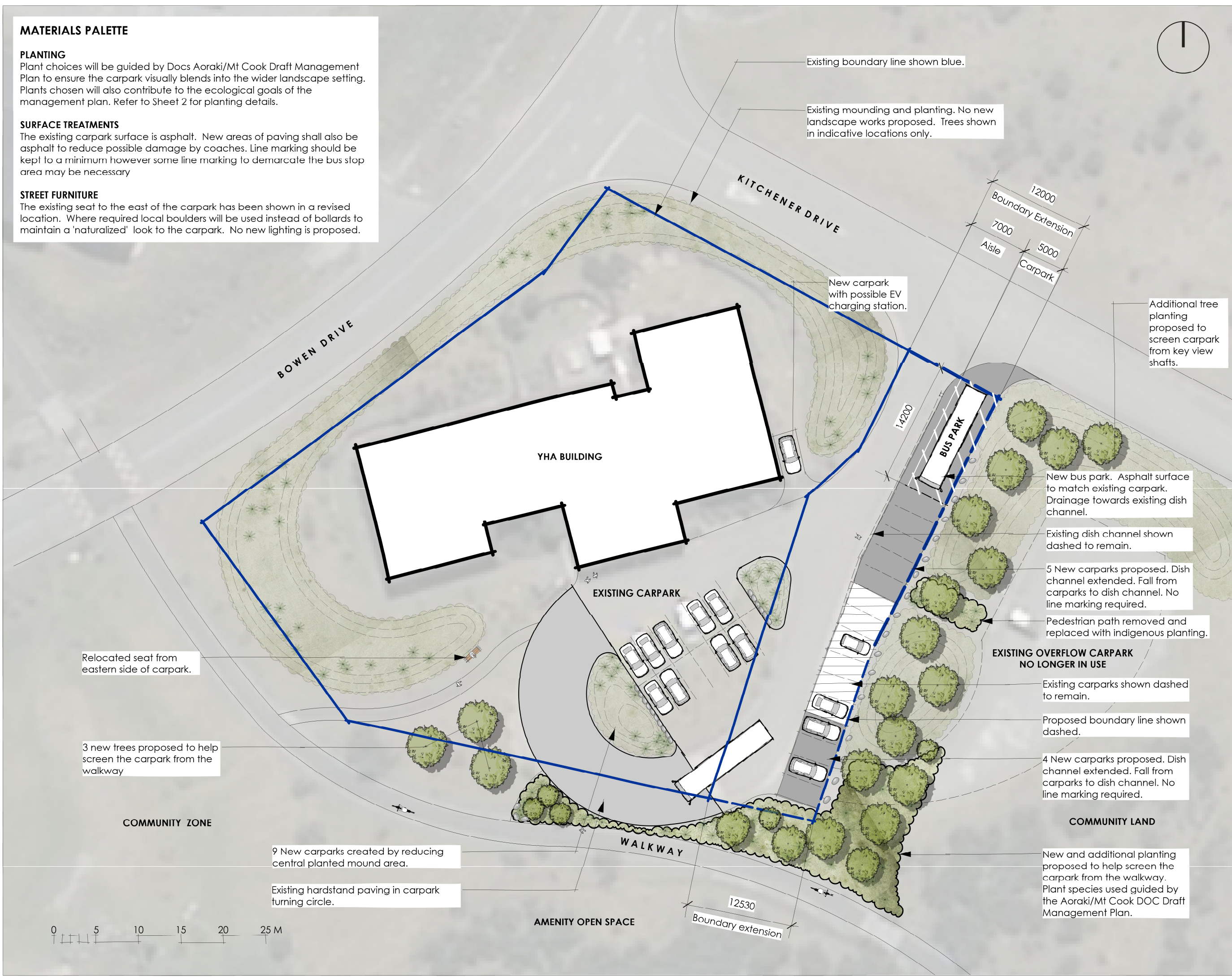
Plant choices will be guided by Docs Aoraki/Mt Cook Draft Management Plan to ensure the carpark visually blends into the wider landscape setting. Plants chosen will also contribute to the ecological goals of the management plan. Refer to Sheet 2 for planting details.

SURFACE TREATMENTS

The existing carpark surface is asphalt. New areas of paving shall also be asphalt to reduce possible damage by coaches. Line marking should be kept to a minimum however some line marking to demarcate the bus stop area may be necessary

STREET FURNITURE

The existing seat to the east of the carpark has been shown in a revised location. Where required local boulders will be used instead of bollards to maintain a 'naturalized' look to the carpark. No new lighting is proposed.



Existing boundary line shown blue.

Existing mounding and planting. No new landscape works proposed. Trees shown in indicative locations only.

New carpark with possible EV charging station.

Additional tree planting proposed to screen carpark from key view shafts.

New bus park. Asphalt surface to match existing carpark. Drainage towards existing dish channel.

Existing dish channel shown dashed to remain.

5 New carparks proposed. Dish channel extended. Fall from carparks to dish channel. No line marking required.

Pedestrian path removed and replaced with indigenous planting.

EXISTING OVERFLOW CARPARK NO LONGER IN USE

Existing carparks shown dashed to remain.

Proposed boundary line shown dashed.

4 New carparks proposed. Dish channel extended. Fall from carparks to dish channel. No line marking required.

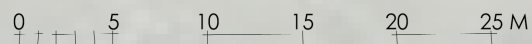
New and additional planting proposed to help screen the carpark from the walkway. Plant species used guided by the Aoraki/Mt Cook DOC Draft Management Plan.

Relocated seat from eastern side of carpark.

3 new trees proposed to help screen the carpark from the walkway

9 New carparks created by reducing central planted mound area.

Existing hardstand paving in carpark turning circle.



COMMUNITY ZONE

AMENITY OPEN SPACE

COMMUNITY LAND

Plant Schedule - Road Reserve

ID	Qty	Latin Name	Common Name	Scheduled Size	Remarks
Au.r.	36	Austroderia richardii	South Island Toe Toe	300/1L	
Ch.ri.	229	Chionochloa rigida	Snow tussock	300/RT	Plant at 800 crs
Di.t.	74	Discaria toumatou	Matagouri	350/1L	Plant at 2000 crs
Fu c	6	Fuscospora cliffortioides	Mountain Beech	2000/45L	
Ho.l.	3	Hoheria lyallii	Mountain Ribbonwood	2000/45L	
Ph.a.	3	Phyllocladus alpinus	Mountain Toatoa	2000/45L	
Ph.c.	47	Phormium cookianum	Mountain Flax / Wharariki	350/1l	Plant at 1500 crs
Po.h.	4	Podocarpus hallii	Halls Totara	2000/45L	
Ps.c.	9	Pseudopanax crassifolius	Lancewood	700-1000/8L	
So.m.	7	Sophora microphylla	Kowhai	2000	
	0				



Pseudopanax crassifolius Phormium cookianum



Chionochloa rigida/Snow tussock



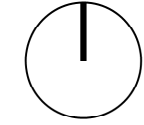
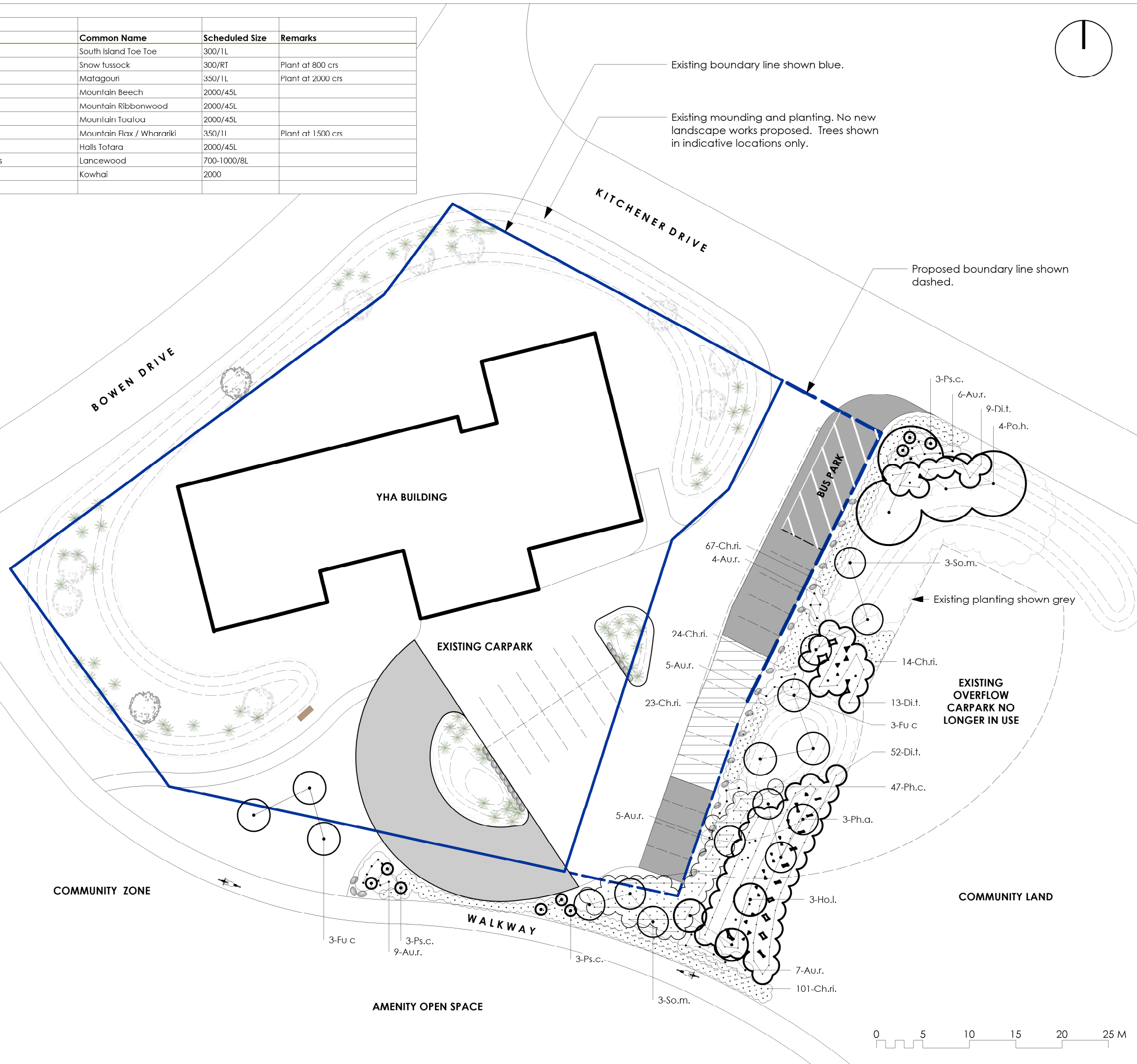
Fuscospora cliffortioides / Mountain beech



Discaria toumatou / Matagouri



Austroderia richardii / Toe Toe Phyllocladus alpinus



AORAKI/MT COOK YHA

Aoraki/Mt Cook National Park

CLIENT
YHA

PLANTING PLAN

FOR DISCUSSION

NOTES

1. Confirm set out of all dimensions on site prior to commencing work.
2. Do not scale off drawings.
3. Traffic Engineer to review and confirm carpark dimensions, queuing space and turning circles etc as required.
4. Civil Engineer to confirm the proposed carpark drainage can be connected into the existing stormwater system.
5. Confirm locations of services on site prior to commencing works.



Level 4, Te Uruti Building, 48 Hereford St
PO Box 2833, Christchurch 8140, New Zealand

T. 03 366 8181
E. admin@kamomارش.co.nz

www.kamomارش.co.nz

Design TS Date : 04.02.19
Drawn TS Scale: 1:400@A3
Check --

REF. NO. 4892 PAGE 2
ISSUE B
REVISION 0

