

Lease Application – Appendix I					
Brief Description of Treble Cone Infrastructure					
Figure #	Infrastructure / Building Name	Actual Footprint	Larger area required for use	Construction	Approx. Coordinates from Google Earth
1	View of top of access road, Home Basin and Easy Rider trail zig zagging up mountain				
2	Treble Cone Trail Map				
3 & 4	Bus shelter – at the base of the mountain	2 x 4 m = 8m ²	12 m ²		44°38'33.69"S: 168°55'46.35" E
5 & 6	Access Road Bridge	Length 20 metres Width 7 metres			44°.38' 07 S: 168°.55'05 E
7	Gravel Hooper – halfway up access road	Approx. 35m ²	50m ²	Steel	44°38'06.09"S: 168°54'43.67" E
8	Location of Gravel Hooper				44°38'06.09"S: 168°54'43.67" E
9	Culverts under the access road & culverts under various 4WD service tracks across the mountain.				
10	Aerial view of Saddle Basin to Home Basin				
11	Aerial view of Home Basin Express Lift path				
12	Aerial view Home Basin				
13	Aerial View of base building and surrounding infrastructure				

Lease Application – Appendix I

Brief Description of Treble Cone Infrastructure

Figure #	Infrastructure / Building Name	Actual Footprint	Larger area required for use	Construction	Approx. Coordinates from Google Earth
14	Aerial view of base building relative to snow groomer shed				
15	Upper Car Park				
16	Base Car Parks & top of access road				
17, 18	Overview of Treble Cone Home Basin infrastructure				
19, 20, 21	Snow Groomer Building/workshop	25.05 x 16 metres	500m ²	Colour steel roof & wall cladding; concrete foundations	44° 38'06.36" S: 168° 53'48.37" E
22	Workshop Storage Container SE	40ft container 12.05 x 2.35 m	30m ²	Steel with concrete foundations	44° 38'07.15" S: 168° 53'48.86" E
23	Bulk Fuel Storage – Petrol 5,000 litres	5m ²	7 m ²	Steel	44°38'05.88" S:168°53'47.25" E
24	Bulk Fuel Storage – Diesel	3x3x20m	5 m ²	Inground 30,000L steel tank adjacent to groomer workshop.	44°38'05.57" S: 168°53'48.03" E
25	Back Up Generator	2 x 2 x 5 m	20 m ²	Cast steel and Alloy	44°38'06.41" S: 168°53'48.46" E
26	Explosives Magazine	2 x 3 x 4 m	10 m ²	Steel & concrete	44°37'34.82" S: 168°53'06.91" E
27, 28, 29	Main base building	Approx. 90 x 12 metres	Approx. 2,000 m ²	Wood (Cedar Battens) & corrugated iron cladding; concrete foundations	44° 37'59.62" S: 168° 53'45.51" E

Lease Application – Appendix I

Brief Description of Treble Cone Infrastructure

Figure #	Infrastructure / Building Name	Actual Footprint	Larger area required for use	Construction	Approx. Coordinates from Google Earth
30	1260 café & Locker containers	Approx. 65 m ²	120m ²	Adapted 20 ft Steel containers Board & cedar batten cladding; concrete foundations	44° 37'58.51" S: 168° 53'44.22" E
31	Wastewater Treatment Plant incl pump shed	450m ²	Approx. 2,000 m ²	AdvanTex Wastewater Treatment Plant	44°37'58.8"S: 168°53'48.8"E
31	Wastewater plant – pump shed	4m ²	6m ²	Timber Frame & corrugated steel cladding	44°37'59.3"S: 168°53'48.5"E
32	Schematic Wastewater Treatment Plant				
33, 34	Snow making reservoir (bottom)	400m ²	400m ²	Dam with Poly lining; surrounded by Deer Fencing	44°37'58.7"S: 168°53'48.1"E
35	Pump House (Main)	6.4 x 4.4 m	32m ²	Adapted 20 ft Steel containers	44°37'58.5"S: 168°53'47.6"E
35, 36	Snow making reservoir (main)	Approx. 2,000 m ²	Approx. 2000m ²	Dam with Poly lining; surrounded by Deer Fencing	44°37'53.11" S: 168°53'42.02" E
37	Magic Carpet / 'learners' conveyor lift	Length 20 m (10m ²)		galvanized steel frame, rubber	44' 37' 58.04" S: 168 '53'47.01" E
38, 39	Platter Lift base	3m ²	3m ²	Steel and alloy; concrete foundations	44°37'56.91" S: 168°53'47.65" E
40, 41	Platter Lift top	3m ²	3m ²	Steel and alloy; concrete foundations	44°37'47.91" S: 168°53'51.36" E

Lease Application – Appendix I					
Brief Description of Treble Cone Infrastructure					
Figure #	Infrastructure / Building Name	Actual Footprint	Larger area required for use	Construction	Approx. Coordinates from Google Earth
38, 39, 40, 41	Platter Lift	Length Approx. 350 metres	N/A	Steel tower and cable Pylons have concrete foundations	44°37'56.91" S: 168°53'47.65" E to 44°37'47.91" S: 168°53'51.36" E
42	Lift Machinery shed @ Express lift base (Return)	200m ²	300m ²	Roof – corrugated iron Exterior – corrugated iron; Foundations- concrete	44° 37'57.62" S: 168° 53'45.71" E
42	Base of Six-seater Express lift - operator hut	24m ²	30m ²	Roof – corrugated iron Exterior –board & cedar batten cladding Foundations- concrete	44°37'57.25" S: 168°53'45.41" E
42	Access Control systems 2 x in Home Basin 1x at Base of Saddle Basin Lift	3x 5m ²		Alloy; Perspex	
43	Home Basin Express Lift	Length Approx. 1,130 metres	N/A	Steel tower and cable Pylons have concrete foundations	44°37'57.25" S: 168°53'45.41" E to 44°37'44.65" S: 168°52'58.91" E
44	Top of Six-seater Express lift - Drive station	176m ²	176m ²	Steel and alloy; Perspex, concrete foundations	44°37'44.65" S: 168°52'58.91" E
44	Top of six-seater express Operator hut	5.7 x 2.7 metres	24m ²	Roof – corrugated iron Exterior – board & cedar batten cladding Foundations- concrete	44°37'44.56" S: 168°52'58.29" E
44	Ski Patrol Cabin @ Express lift top	5.0 x 7.5 metres	54m ²	Roof – corrugated iron Exterior – board &	44°37'43.67" S: 168°52'58.54" E

Lease Application – Appendix I

Brief Description of Treble Cone Infrastructure

Figure #	Infrastructure / Building Name	Actual Footprint	Larger area required for use	Construction	Approx. Coordinates from Google Earth
				cedar batten cladding Foundations- concrete	
45, 46, 47, 48	Old Day Lodge / Ski Patrol classroom	93.75 m ²	110m ²	Roof – corrugated iron Exterior – wooden cladding Foundations- concrete	44°37'52.46" S: 168°53'13.68" E
50, 51, 52	Altitude Cafe	6.058 x 5.626 metres	60m ²	2x converted steel 20 ft container with board & cedar batten cladding; concrete foundations	44°37'42.27" S: 168°52'59.86" E
53, 54, 55	Old lift tow shed (Saddle) – recently converted into a toilet block	48m ²	50m ²	Roof – corrugated iron Exterior –board and cedar batten cladding Foundations- concrete	44°38'06.94" S: 168°53'03.90" E
56	Race / events container storage (Matukituki)	2x 20ft containers 2x 5.89 x 2.35m	50m ²	2x Steel 20 ft container concrete foundations	44°37'45.23" S: 168°53'23.20" E
57	Mid mountain booster pumps station	48m ²	50m ²	Roof – corrugated iron Exterior – insulated sandwich panel with colour steel exterior Foundations - concrete	44°37'45.0"S: 168°53'23.1"E
58, 59	Base of Quad lift operator hut	40m ²	45m ²	Roof – corrugated iron Exterior –board and cedar batten cladding Foundations- concrete	44°38'23.93" S: 168°53'03.04" E

Lease Application – Appendix I

Brief Description of Treble Cone Infrastructure

Figure #	Infrastructure / Building Name	Actual Footprint	Larger area required for use	Construction	Approx. Coordinates from Google Earth
60	Lift Machinery shed @ Quad base (drive)	5.0 x 3.9 m	50m ²	Steel, Perspex, and alloy; concrete foundations	44°38'23.7"S: 168°53'03.0"E
61	Quad Lift	Length Approx. 950 metres	N/A	Steel towers and cable Pylons have concrete foundations	44°38'23.93" S: 168°53'03.04" E to 44°38'11.33" S: 168°52'24.34" E
62, 63	Top of Quad lift operator/patrol hut	72m ²	80m ²	Roof – corrugated iron Exterior – board & cedar cladding Foundations- concrete	44°38'11.33" S: 168°52'24.34" E
64	Small 'A' frame Patrol Equipment Shed	2 m x 4 m	10 m ²	Steel and Timber	44°38'12.06" S: 168°52'23.44" E
65	Radio Aerial	1m ²	2m ²	Steel and alloy; concrete foundations	44°38'21.3"S: 168°53'17.4"E

Figure 1 View of top of access road, Home Basin and Easy Rider trail zig zagging up mountain



Figure 2 Treble Cone Trail Map

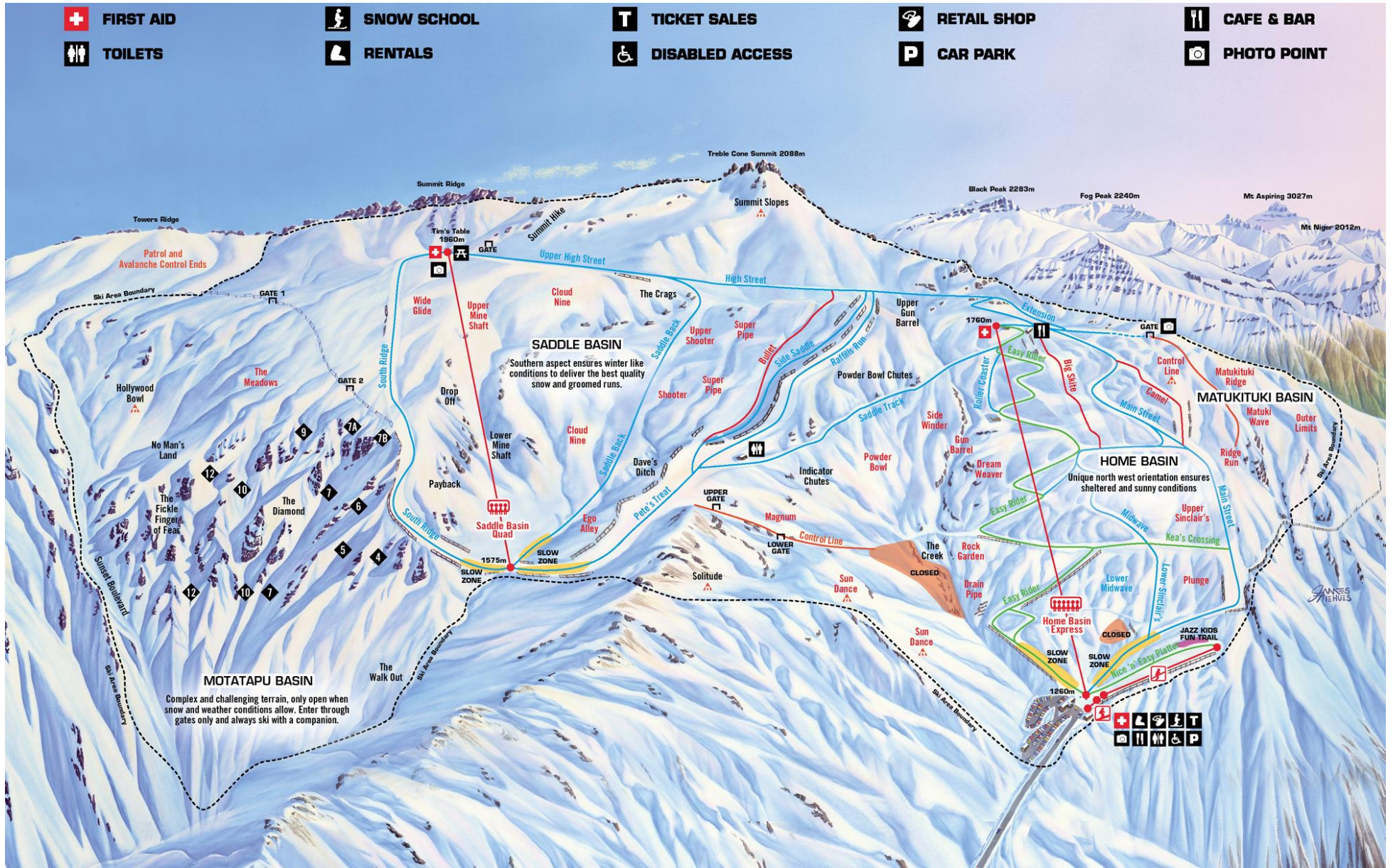


Figure 3 & 4 Bus Shelter



Figure 5 & 6 Access Road Bridge



Figure 7 Gravel Hooper



Figure 8 Site of Gravel Hooper



Figure 9 – Example of Culvert



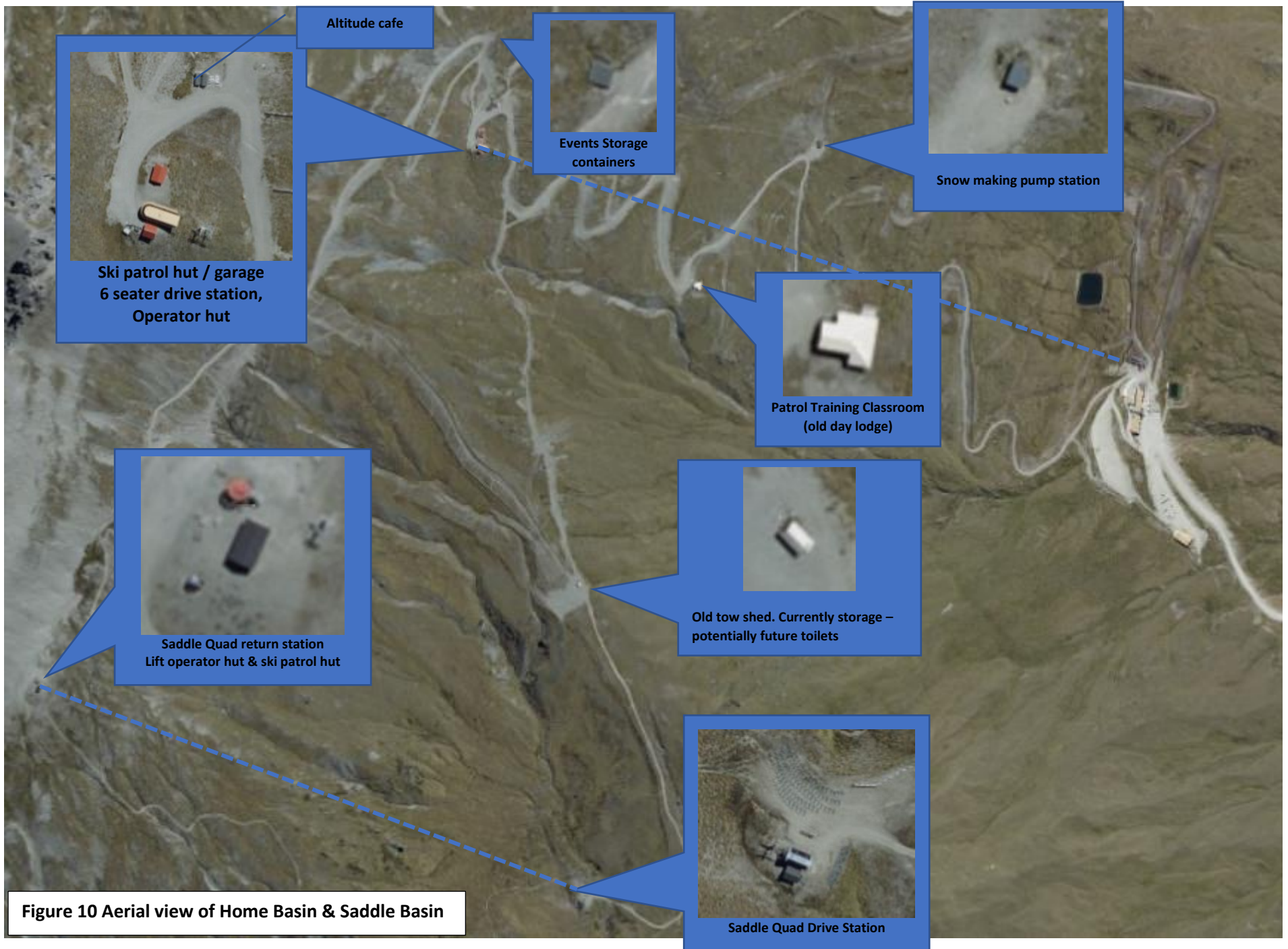


Figure 10 Aerial view of Home Basin & Saddle Basin



Figure 11 Aerial View of Home Basin Express Lift

Figure 12 Aerial View of Home Basin





Figure 13 Aerial View of Base Building and surrounding infrastructure



Figure 14 **Aerial View of Base Building relative to Snow Groomer & workshop building**

Figure 15 Upper Car Park



Figure 16 Base car parks and the top of Access road.



Figure 17 Overview of Treble Cone Home Basin infrastructure – incl car parks



Figure 18 Overview of Treble Cone Home Basin infrastructure



Figure 19 Snow Groomer / Workshop Building relative to Base Building



Figure 20 Snow Groomer / Workshop Building



Figure 21 Plan of Snow Groomer / Workshop Building

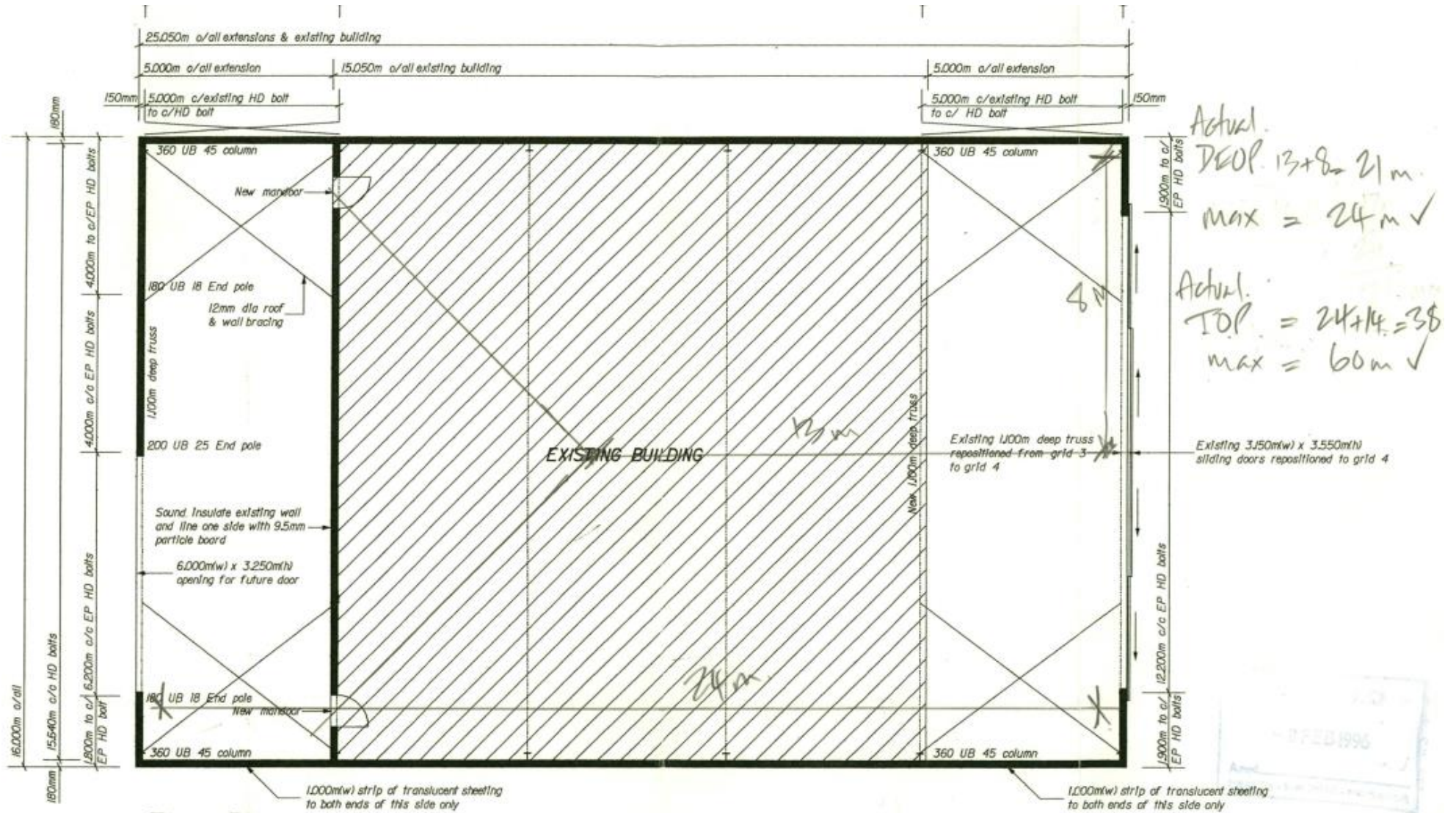


Figure 22 Workshop Storage Container SE



Figure 23 Bulk Fuel Storage – Petrol



Figure 24 Bulk Fuel Storage - Diesel (in ground tank)



Figure 25 Backup generator (in Snow Groomer Shed)



Figure 26 Explosives Magazine - Home Basin



Figure 27 Base Building

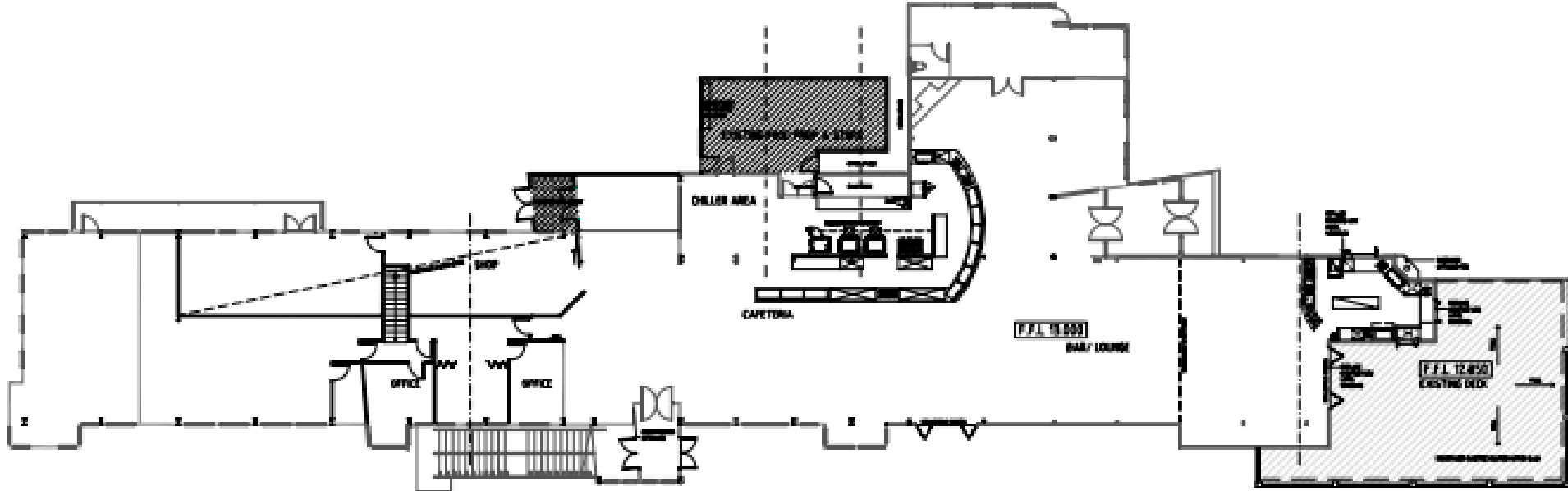


Figure 28 Base Building

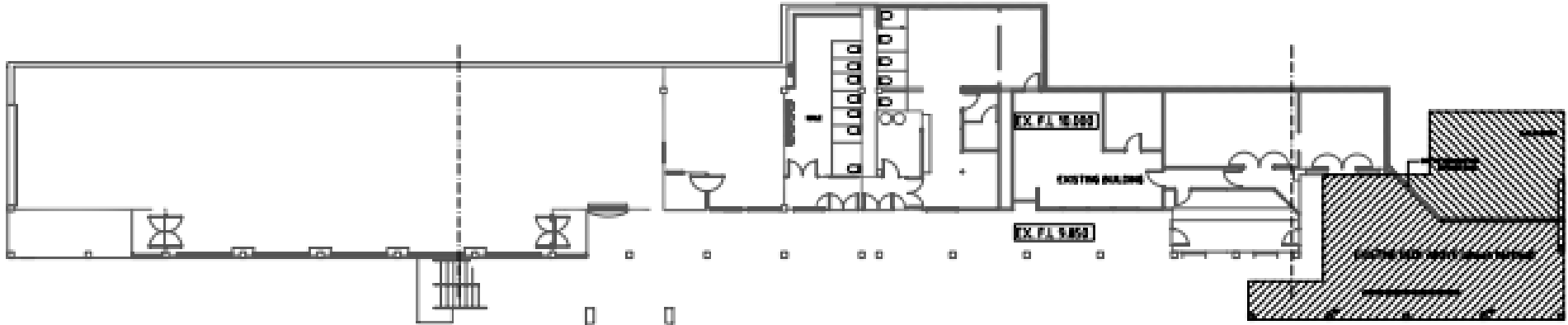


LPG Bottle storage

Figure 29 Base Building Plans



EXISTING UPPER FLOOR PLAN



EXISTING LOWER FLOOR PLAN

Figure 30 1260 café & Locker containers



Figure 31 Wastewater Treatment Plant incl pump shed



Figure 32 Schematic of Wastewater Treatment Plant

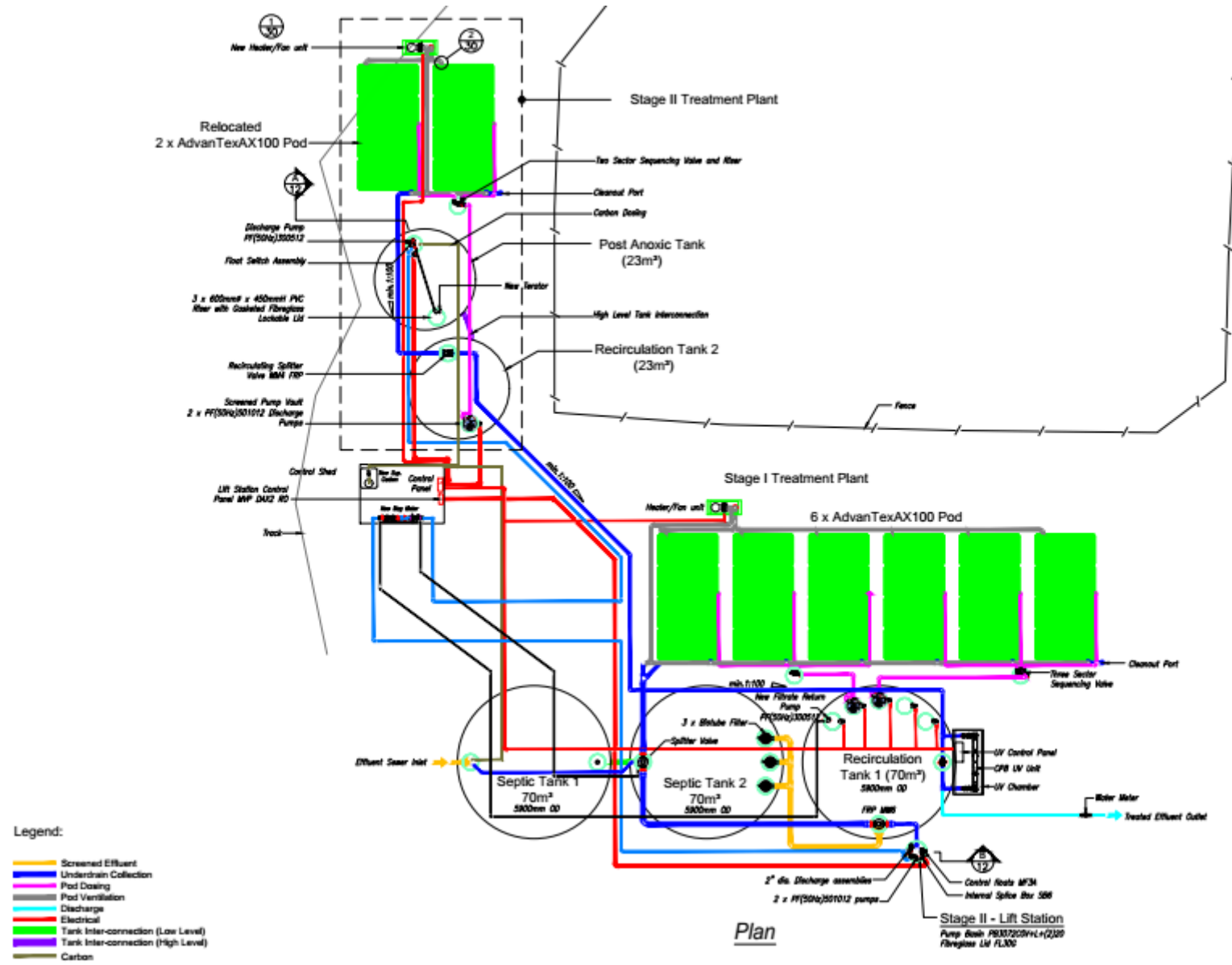


Figure 33 Snow making reservoir (bottom)



Figure 34 Snow Making Reservoir (bottom) and Pump House (Main)



Figure 35 Snow making reservoir (main)



Figure 36 Snow making reservoir (main)



Figure 37 Learners Conveyor / Magic Carpet



Figure 38 Base of Platter Lift



Figure 39 Base of Platter Lift



Figure 40 Platter Lift



Figure 41 Platter Lift



Figure 42 Express Lift – base incl operator shed plus 2x access control systems



Figure 43 Express Lift – pylons



Figure 44 Top of six-seater Express lift – Drive Station, Operator Hut, Ski Patrol Cabin and Altitude Cafe

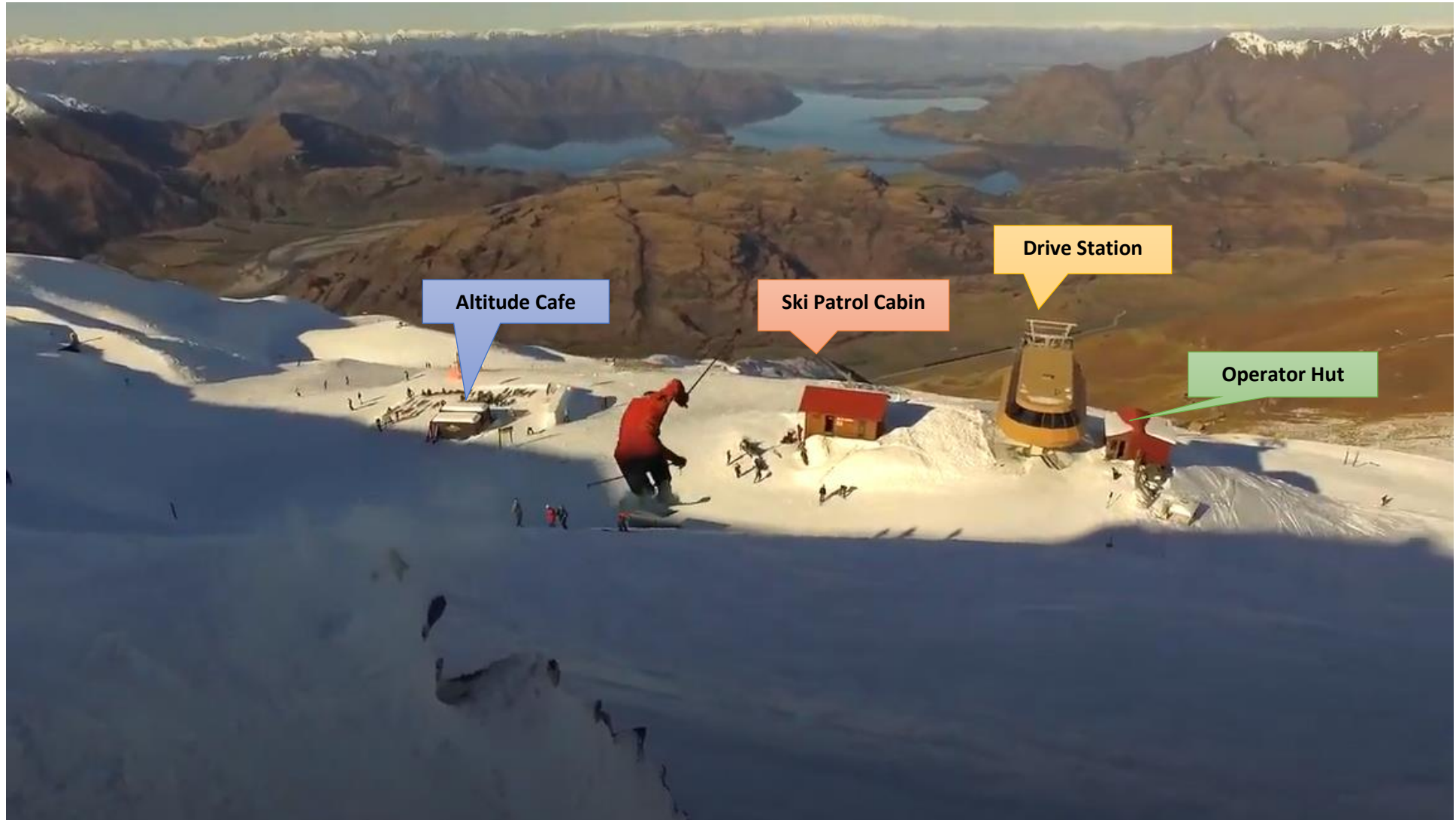


Figure 45 Floor plan of Ski Patrol Cabin

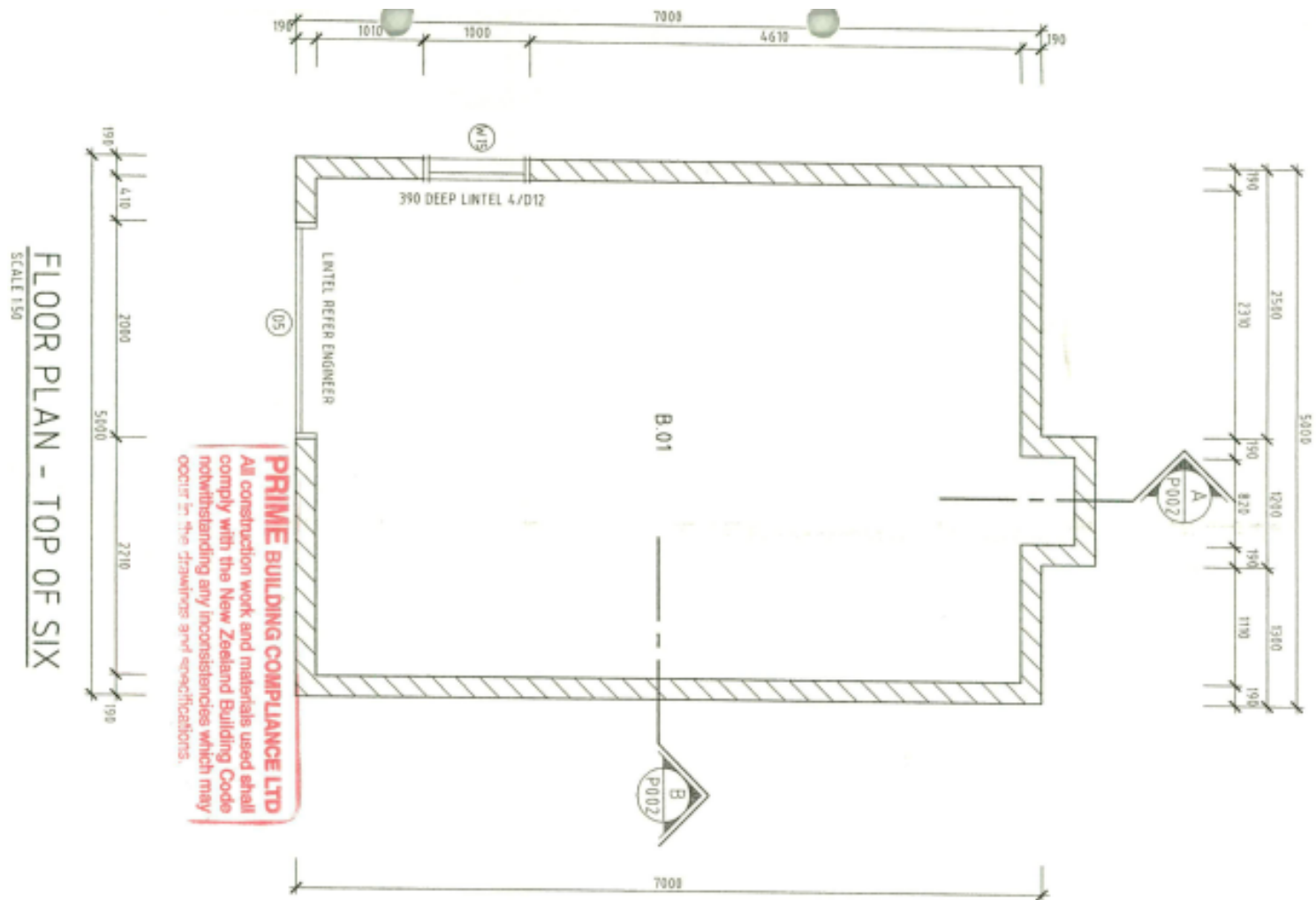


Figure 46 Old Day Lodge / Ski Patrol Classroom

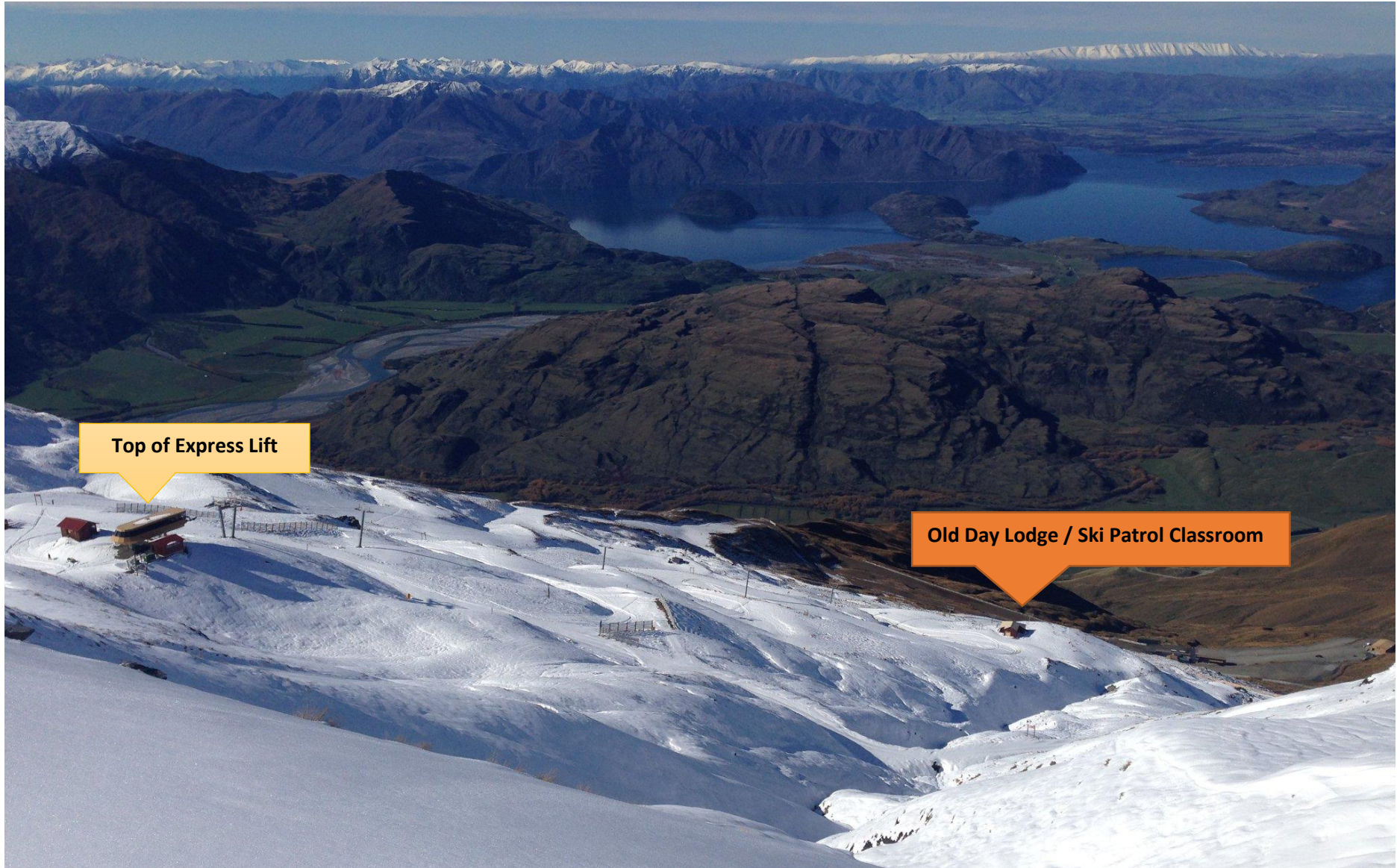


Figure 47 Old Day Lodge

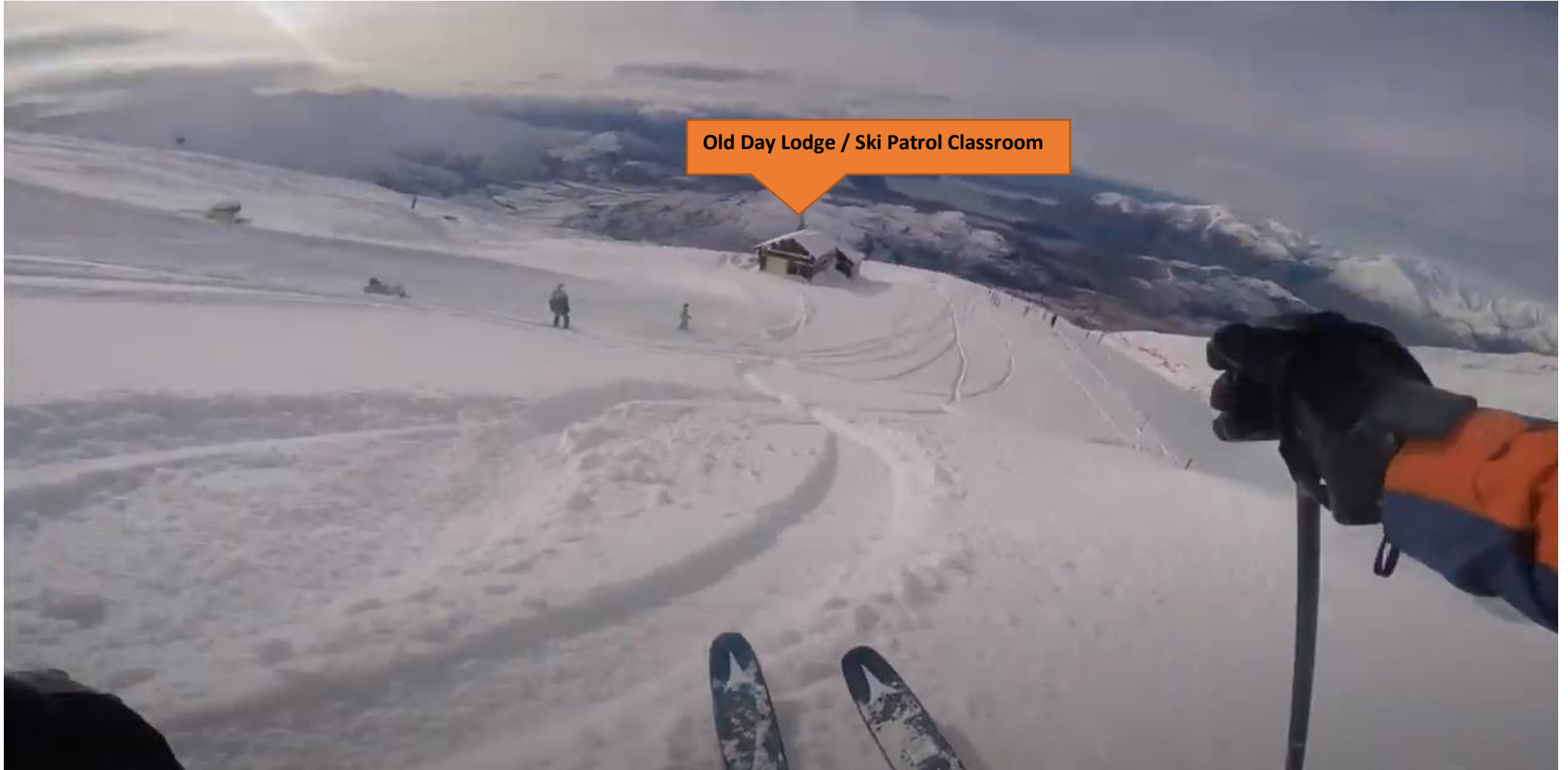


Figure 48 Old Day Lodge / Ski Patrol Classroom



Figure 49 Old Day Lodge / Ski Patrol Classroom - plan

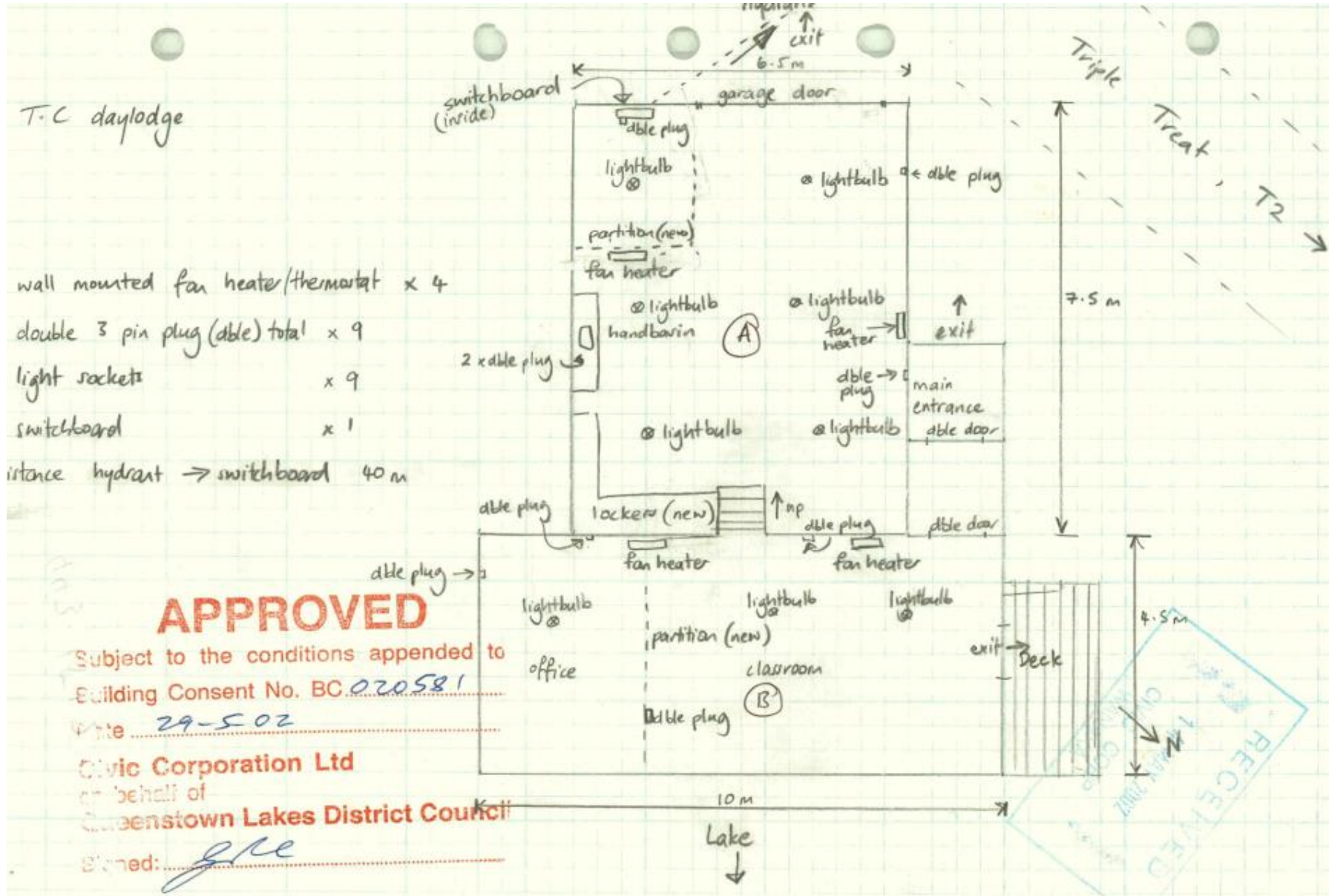


Figure 50 Location of Altitude Cafe



Figure 51 Altitude Cafe with top of six-seater Express lift in the background



Figure 52 Altitude Café Schematic

AREA

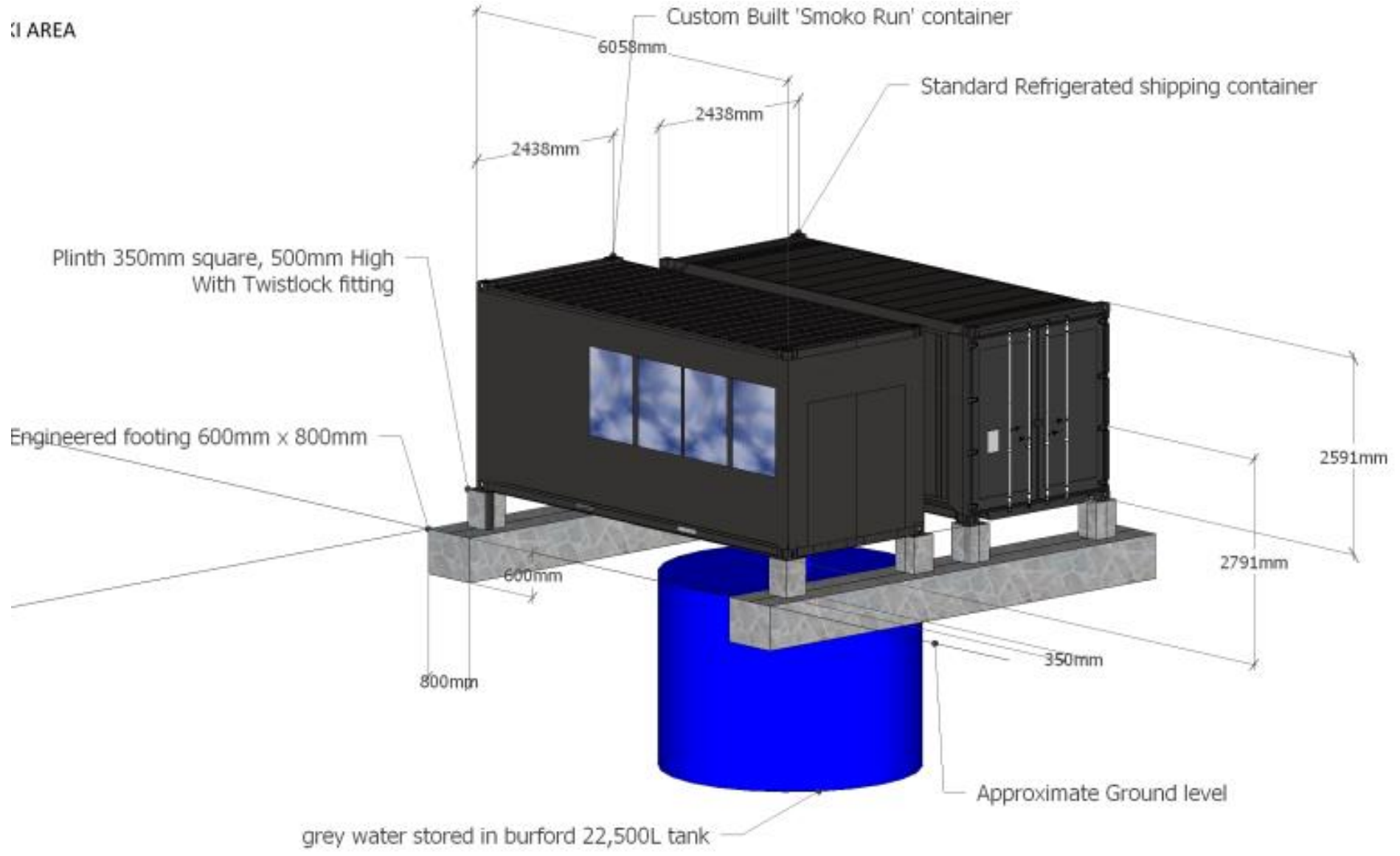


Figure 53 Old Lift Tow Shed relative to Base of Quad Lift



Figure 54 **Old lift tow shed (Saddle) – (converted into a toilet block)**



Figure 55 Old lift tow shed (converted into toilet block with portaloos removed)



Figure 56 Race Events Container Storage (Matukituki)



Figure 57 Mid Mountain Booster pump station



Figure 58 Base of Quad lift incl access control system

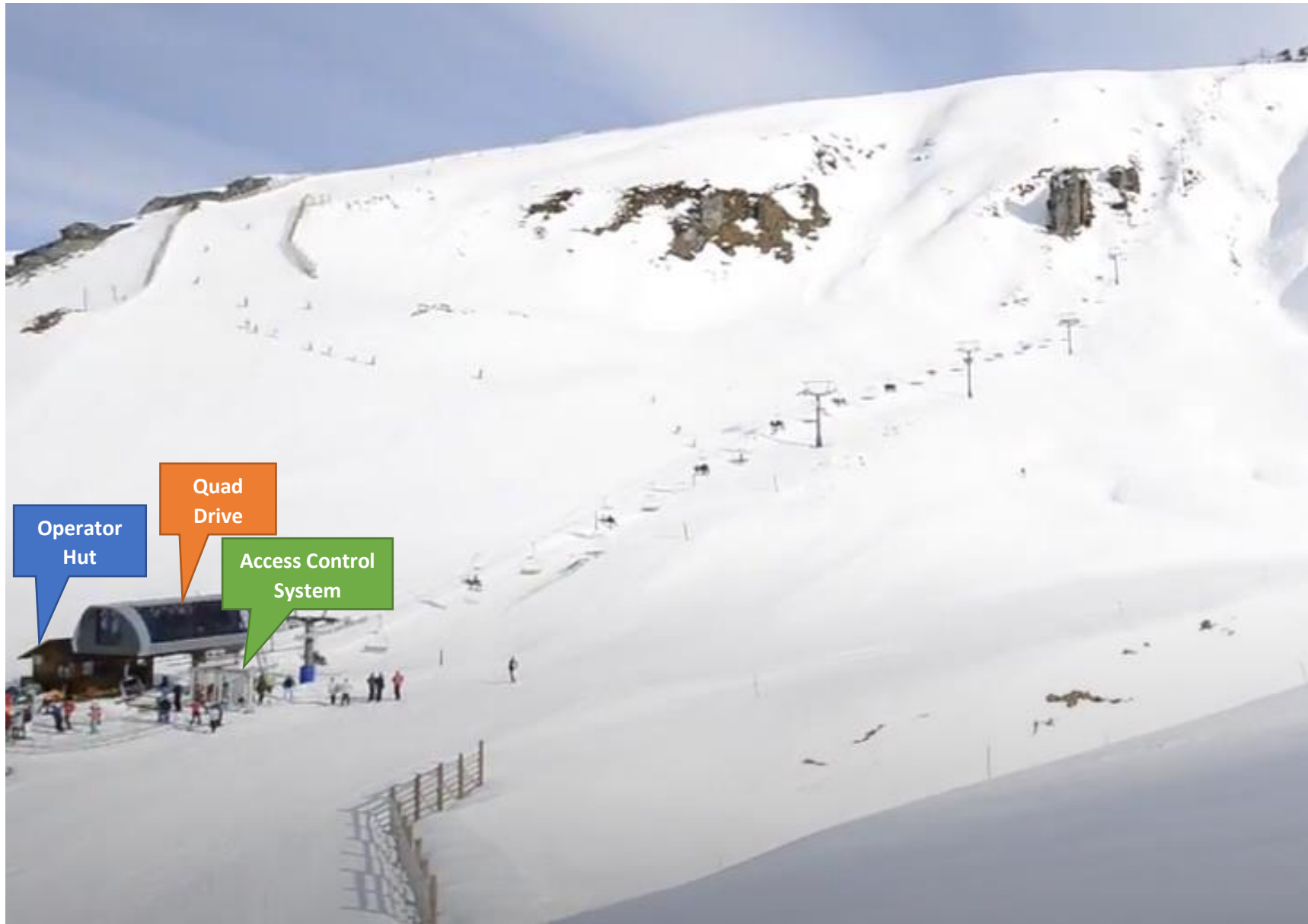


Figure 59 Base Quad lift operator hut



Figure 60 Lift Machinery Shed at Quad Base (drive)



Figure 61 Quad Chair Lift – including pylons



Figure 62 Top of Quad lift – return station; operator / patrol hut and small 'A' Frame Patrol Equipment Shed



Figure 63 Top of Quad lift – return station and operator / patrol hut



Figure 64 Small 'A' frame Patrol Equipment shed



Figure 65 Radio Aerial

