

## Easement Application – Appendix II

### Brief Description of Treble Cone Infrastructure

Figure #	Infrastructure / Building Name	Actual Footprint	Larger area required for use	Construction	Approx. Coordinates from Google Earth
1,2,3,	Carpark at base of Mountain	Approx. 7500 m <sup>2</sup>	N/A	Gravel	44°38'33.35" S: 168°55'45.53" E to 44°38'35.01" S: 168°56'00.41" E
4,5,	Treble Cone Ski Field Access Road	Length approx. 7000 m from Wanaka Mount Aspiring Road to boundary of Motatapu Conservation Area	N/A	Gravel	44°38'33.09" S: 168°56'03.38" E to 44°38'33.39" S: 168°54'32.36" E
6	Access Road within Motatapu Conservation Area	Length approx. 2000 m from boundary	N/A	Gravel	44°38'01.27" S: 168°53'46.84" E to 44°38'33.39" S: 168°54'32.36" E
7	Access Road Bridge	Length 20 metres Width 7 metres			44°.38' 07 S: 168°.55'05 E
8	Gravel Hooper – halfway up access road	Approx. 35m <sup>2</sup>	50m <sup>2</sup>	Steel	44°38'06.09"S: 168°54'43'67" E
9	Location of Gravel Hooper				44°38'06.09"S: 168°54'43'67" E
10	Culverts under the access road & culverts under various 4WD service tracks across the mountain.				
11	Various 4WD service tracks across the mountain	15-20 km			
12	View of top of access road, Home Basin and Easy Rider trail zig zagging up mountain				
13	Treble Cone Trail Map				

## Easement Application – Appendix II

### Brief Description of Treble Cone Infrastructure

Figure #	Infrastructure / Building Name	Actual Footprint	Larger area required for use	Construction	Approx. Coordinates from Google Earth
14	Southern Home Basin Carpark	Approx. 6,250 m <sup>2</sup>	N/A	Gravel	44°38'01.95" S: 168°53'45.91" E to 44°38'05.87" S: 168°53'47.49" E
15	Top end (Northern End) of Car Park and Access Road	Approx. 1400 m <sup>2</sup>	N/A	Gravel	44°37'59.95" S: 168°53'46.57" E to 44°38'06.00" S: 168°53'51.41" E
16	Upper Home Basin Carpark	Approx. 5,100 m <sup>2</sup>	N/A	Gravel	44°37'59.38" S: 168°53'43.17" E to 44°38'04.43" S: 168°53'44.74" E
17	Base car parks & top of access road				
18, 19	Overview of Treble Cone Home Basin infrastructure				
20	Snow Groomer Building/workshop	25.05 x 16 metres	500m <sup>2</sup>	Colour steel roof & wall cladding; concrete foundations	44° 38'06.36" S: 168° 53'48.37" E
21	Plan of Snow Groomer Building/workshop	25.05 x 16 metres	500m <sup>2</sup>	Colour steel roof & wall cladding; concrete foundations	44° 38'06.36" S: 168° 53'48.37" E
22	Workshop Storage Container SE	40ft container 12.05 x 2.35 m	30m <sup>2</sup>	Steel with concrete foundations	44° 38'07.15" S: 168° 53'48.86" E
23	Bulk Fuel Storage – Petrol 5,000 litres	5m <sup>2</sup>	7 m <sup>2</sup>	Steel	44°38'05.88" S:168°53'47.25" E
24	Bulk Fuel Storage - Diesel	3x3x20m	5 m <sup>2</sup>	Inground 30,000L steel tank adjacent to groomer workshop.	44°38'05.57" S: 168°53'48.03" E
25	Back-up generator	2 x 2 x 5 m	20 m <sup>2</sup>	Cast steel and Alloy	44°38'06.41" S: 168°53'48.46" E
26	Explosives Magazine	2 x 3 x 4 m	10 m <sup>2</sup>	Steel & concrete	44°37'34.82" S: 168°53'06.91" E

## Easement Application – Appendix II

### Brief Description of Treble Cone Infrastructure

Figure #	Infrastructure / Building Name	Actual Footprint	Larger area required for use	Construction	Approx. Coordinates from Google Earth
27, 28, 29	Main base building	Approx. 20 x 12 metres	Approx. 2,000m <sup>2</sup>	Wood (Cedar Battens) & corrugated iron cladding; concrete foundations	44° 37'59.62" S: 168° 53'45.51" E
30, 31	Picnic Tables / outdoor patio	Approx. 120m <sup>2</sup>		Paved with wooden tables	44°37'58.62" S: 168°53'44.89"
32	Ski & snow board racks	Approx. 60m <sup>2</sup>		galvanized steel frames,	44°37'58.33" S: 168°53'45.13"
33	1260 café & Locker containers	Approx. 65 m <sup>2</sup>	120m <sup>2</sup>	Adapted 20 ft Steel containers Board & cedar batten cladding; and concrete foundations	44° 37'58.51" S: 168° 53'44.22" E
33	Wastewater Treatment Plant	450m <sup>2</sup>	Approx. 2,000 m <sup>2</sup>	AdvanTex Wastewater Treatment Plant	44°37'58.8"S 168°53'48.8"E
34	Wastewater plant – pump shed	4m <sup>2</sup>	6m <sup>2</sup>	Timber Frame & corrugated steel cladding	44°37'59.3"S 168°53'48.5"E
35	Schematic Wastewater Treatment Plant				
36, 37	Snow making reservoir (bottom)	400m <sup>2</sup>	400m <sup>2</sup>	Dam with Poly lining; surrounded by Deer Fencing	44°37'58.7"S 168°53'48.1"E
37	Pump House (Main)	6.4 x 4.4 m	32m <sup>2</sup>	Adapted 20 ft Steel containers	44°37'58.5"S 168°53'47.6"E
38, 39	Snow making reservoir (main)	Approx. 2,000 m <sup>2</sup>	Approx. 2000m <sup>2</sup>	Dam with Poly lining; surrounded by Deer Fencing	44°37'53.11" S: 168°53'42.02" E
40	Learners Conveyor / Magic Carpet	Length 20 m (10m <sup>2</sup> )		galvanized steel frame, rubber	44' 37' 58.04" S: 168 '53'47.01" E
41, 42	Platter Lift base	3m <sup>2</sup>	3m <sup>2</sup>	Steel and alloy; concrete foundations	44°37'56.91" S: 168°53'47.65" E
41, 42	Platter Lift top	3m <sup>2</sup>	3m <sup>2</sup>	Steel and alloy; concrete foundations	44°37'47.91" S: 168°53'51.36" E

## Easement Application – Appendix II

### Brief Description of Treble Cone Infrastructure

Figure #	Infrastructure / Building Name	Actual Footprint	Larger area required for use	Construction	Approx. Coordinates from Google Earth
41, 42	Platter Lift	Length Approx. 350 metres	N/A	Steel tower and cable	44°37'56.91" S: 168°53'47.65" E to 44°37'47.91" S: 168°53'51.36" E
43	Lift Machinery shed @ Express lift base (Return)	200m <sup>2</sup>	300m <sup>2</sup>	Roof – corrugated iron Exterior – corrugated iron Foundations- concrete	44° 37'57.62" S: 168° 53'45.71" E
43	Base of Six-seater Express lift - operator hut	24m <sup>2</sup>	30m <sup>2</sup>	Roof – corrugated iron Exterior –board & cedar batten cladding Foundations- concrete	44°37'57.25" S: 168°53'45.41" E
43	Access Control systems 2 x in Home Basin 1x at Base of Saddle Basin Lift	3x 5m <sup>2</sup>		Alloy; Perspex	
44	Home Basin Express Lift	Length Approx. 1,130 metres	N/A	Steel tower and cable	44°37'57.25" S: 168°53'45.41" E to 44°37'44.65" S: 168°52'58.91" E
45	Top of Six-seater Express lift - Drive station	176m <sup>2</sup>	176m <sup>2</sup>	Steel and alloy; Perspex, concrete foundations	44°37'44.65" S: 168°52'58.91" E
45	Top of six-seater express Operator hut	5.7 x 2.7 metres	24m <sup>2</sup>	Roof – corrugated iron Exterior – board & cedar batten cladding Foundations- concrete	44°37'44.56" S: 168°52'58.29" E
46	Plan of Ski Patrol Cabin @ Express lift top	5.0 x 7.5 metres	54m <sup>2</sup>	Roof – corrugated iron Exterior – board & cedar batten cladding Foundations- concrete	44°37'43.67" S: 168°52'58.54" E

## Easement Application – Appendix II

### Brief Description of Treble Cone Infrastructure

Figure #	Infrastructure / Building Name	Actual Footprint	Larger area required for use	Construction	Approx. Coordinates from Google Earth
47, 48, 49	Old Day Lodge / Ski Patrol classroom	93.75 m <sup>2</sup>	110m <sup>2</sup>	Roof – corrugated iron Exterior – wooden cladding Foundations- concrete	44°37'52.46" S: 168°53'13.68" E
50, 51, 52	Altitude Cafe	6.058 x 5.626 metres	60m <sup>2</sup>	2x converted steel 20 ft container with board & cedar batten cladding; concrete foundations	44°37'42.27" S: 168°52'59.86" E
53	Old lift tow shed (Saddle) – recently developed upgraded to a toilet block	48m <sup>2</sup>	50m <sup>2</sup>	Roof – corrugated iron Exterior –board and cedar batten cladding Foundations- concrete	44°38'06.94" S 168°53'03.90" E
54	Race / events container storage (Matukituki)	2x 20ft containers	50m <sup>2</sup>	Steel 20 ft container concrete foundations	44°37'45.23" S: 168°53'23.20" E
55	Mid mountain Booster pumps station	48m <sup>2</sup>	50m <sup>2</sup>	Roof – corrugated iron Exterior – insulated sandwich panel with colour steel exterior Foundations - concrete	44°37'45.0"S 168°53'23.1"E
56	Base of Quad lift incl operator hut	40m <sup>2</sup>	45m <sup>2</sup>	Roof – corrugated iron Exterior –board and cedar batten cladding Foundations- concrete	44°38'23.93" S: 168°53'03.04" E
57, 58	Lift Machinery shed @ Quad base (drive)	5.0 x 3.9 m	50m <sup>2</sup>	Steel, Perspex, and alloy; concrete foundations	44°38'23.7"S 168°53'03.0"E
59	Quad Lift	Length Approx. 950 metres	N/A	Steel towers and cable	44°38'23.93" S: 168°53'03.04" E to 44°38'11.33" S: 168°52'24.34" E

## Easement Application – Appendix II

### Brief Description of Treble Cone Infrastructure

Figure #	Infrastructure / Building Name	Actual Footprint	Larger area required for use	Construction	Approx. Coordinates from Google Earth
60, 61	Top of Quad lift operator/patrol hut	72m <sup>2</sup>	80m <sup>2</sup>	Roof – corrugated iron Exterior – board & cedar cladding Foundations- concrete	44°38'11.33" S: 168°52'24.34" E
62	Small 'A' frame Patrol Equipment Shed	2 m x 4 m	10 m <sup>2</sup>	Steel and Timber	44°38'12.06" S: 168°52'23.44" E
63	Radio Aerial	1m <sup>2</sup>	2m <sup>2</sup>	Steel and alloy; concrete foundations	44°38'21.3"S 168°53'17.4"E
64, 65	Various ski field tracks and trails	Length 25 to 30km	450ha	N/A	Various locations – refer trail map
66	Snow Fences	In 10 to 20m in length sections, 1.8m high	3000m	Tantalized wooden deer fence posts with 6-7 horizontal planks (150 x 25mm) with gaps between them	Various locations
67	Avalanche Protection Devices (Gazex) Steel guns that launch gas to prestart avalanches <a href="http://www.tas.fr/en/products/18-produits-avalanches/535-gazex-gazflex-en">http://www.tas.fr/en/products/18-produits-avalanches/535-gazex-gazflex-en</a>	Not yet installed			
	Buried power cables	9 km	N/A	Alloy, Copper, Polyethylene	
	Buried water pipes (potable water & snow making)	6 km	N/A	Steel	
	Buried wastewater pipes	1.8km	N/A	PVC & Polyethylene	

Figure 1 Carpark at base of mountain

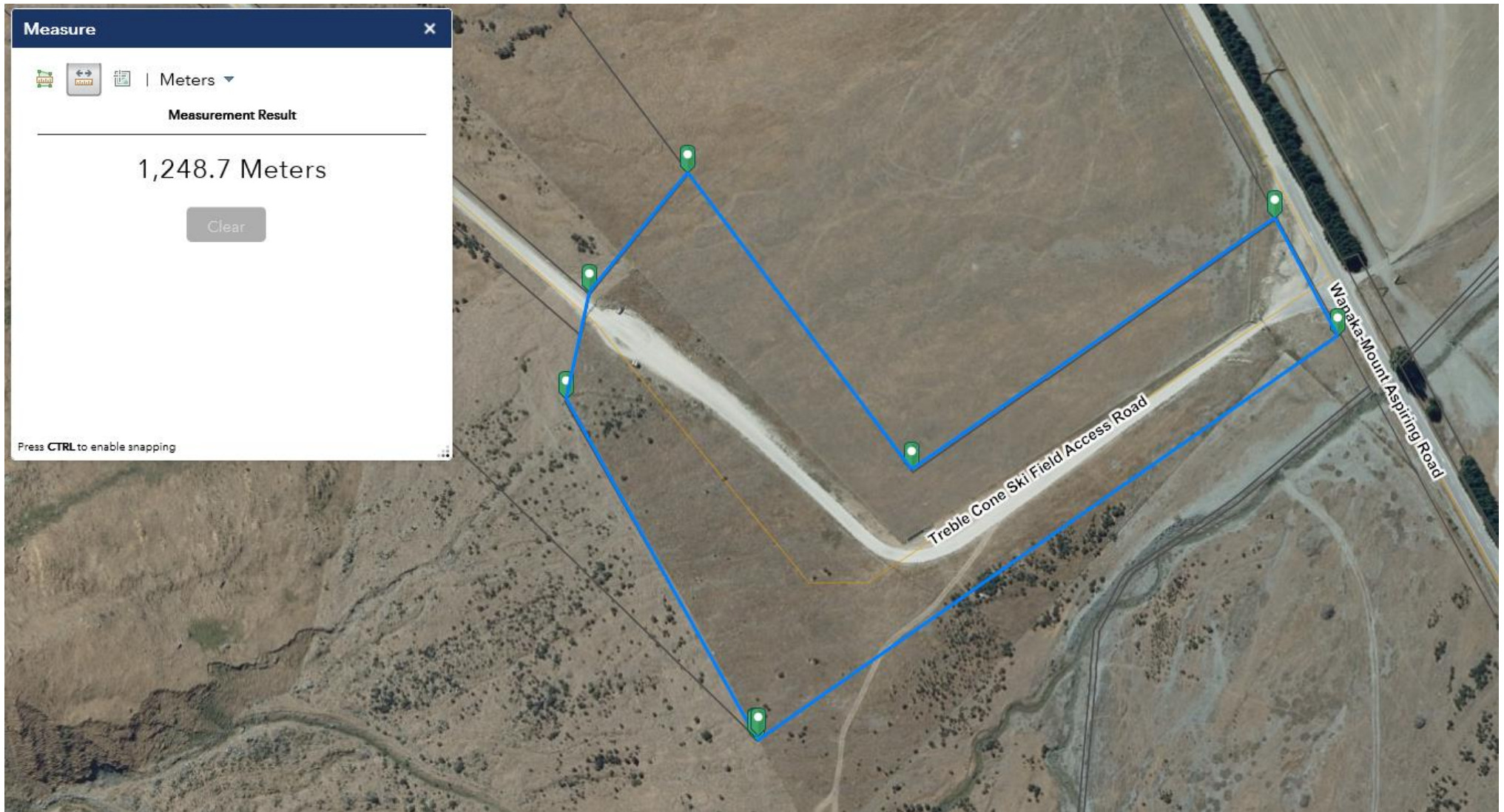


Figure 2 Carpark at base of mountain





Figure 3 Carpark at base of mountain



Figure 4 & 5 Treble Cone Access Road



**Figure 6**      **Treble Cone Access Road**



**Figure 7      Gravel Hooper (incl Access Track)**



Figure 8 Site of Gravel Hooper



Figure 9 Access Road Bridge



**Figure 10 – Example of Culvert**



**Figure 11 – Example of the 4WD service tracks across the mountain**





**Figure 12** View of top of access road, Home Basin and Easy Rider trail zig zagging up mountain



Figure 13 Treble Cone Trail Map

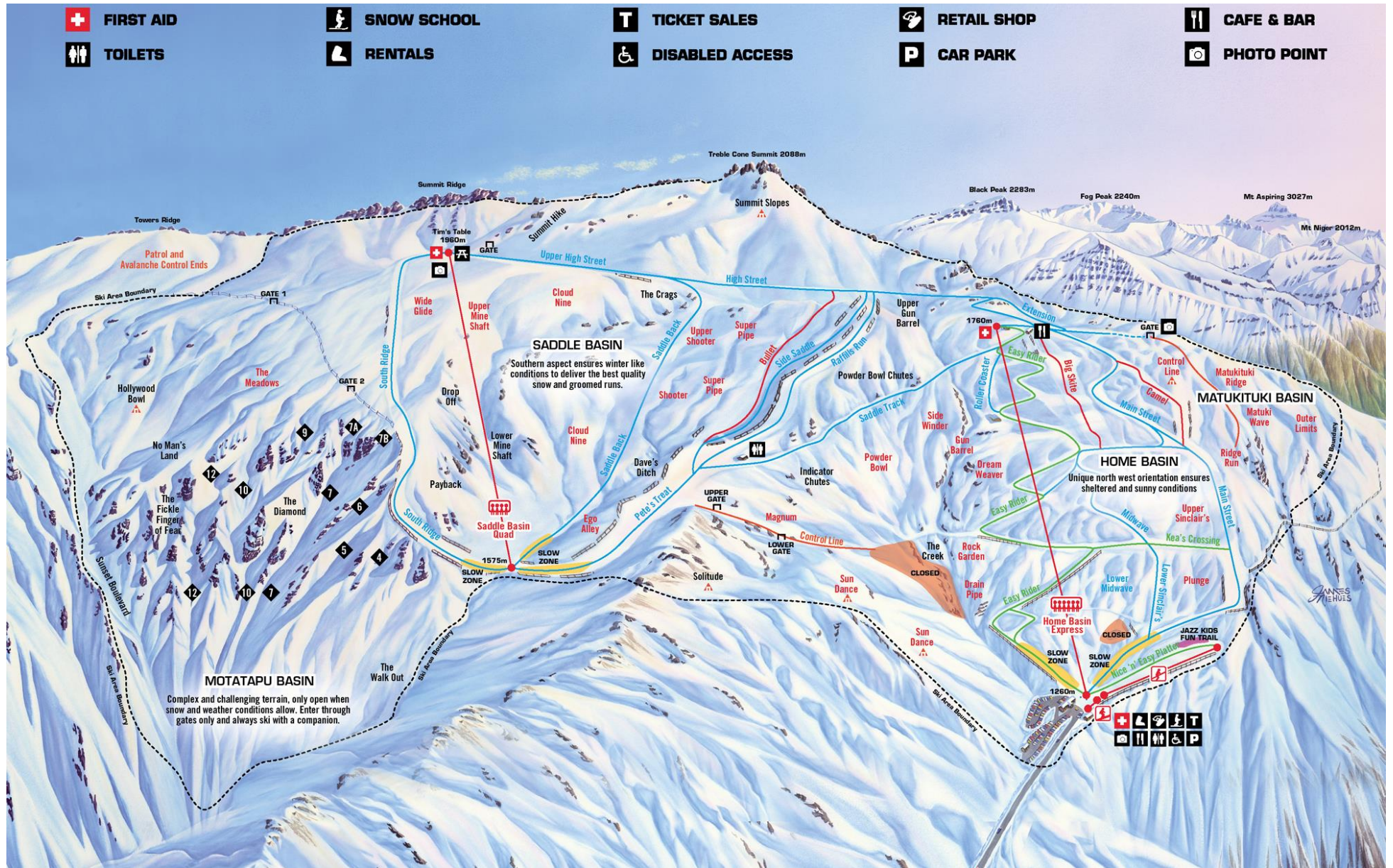


Figure 14 Southern Basin Car Park – with snow groomer shed in the Distance



Figure 15 Top end (Northern End) of carpark with road up to Upper Car park on left



**Figure 16 Upper Carpark**



**Figure 17 Base car parks & top of Access road.**



**Figure 18** Overview of Treble Cone Home Basin infrastructure – incl car parks



Figure 19 Overview of Treble Cone Home Basin infrastructure



Figure 20 Snow Groomer Building incl workshop





Figure 21 Plan of Snow Groomer Building

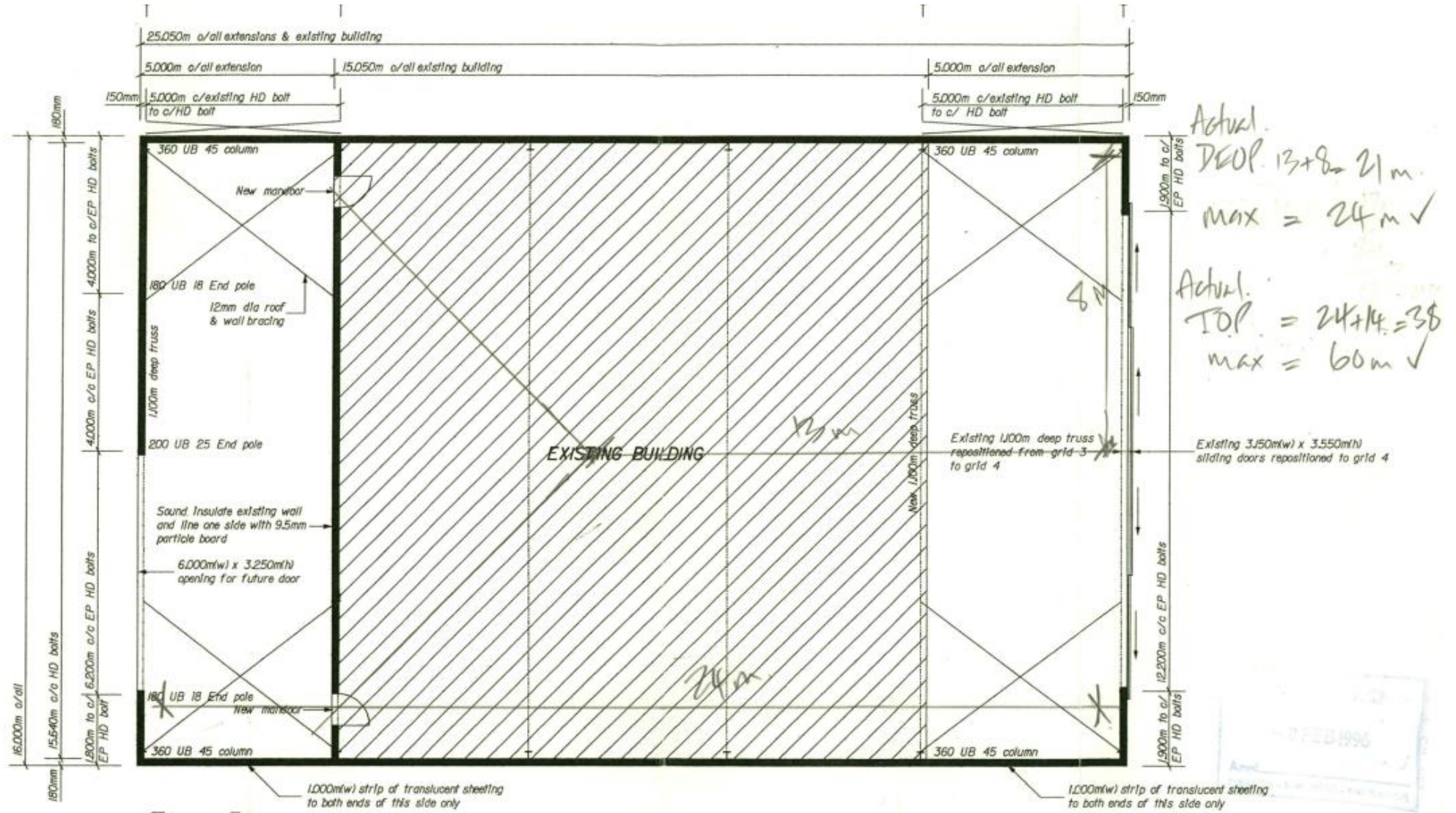


Figure 22 Workshop Storage Container SE



Figure 23 Bulk Fuel Storage – Petrol



Figure 24 Bulk Fuel Storage - Diesel



Figure 25 Backup generator (In Snow Groomer Shed)



**Figure 26** Explosives Magazine. Home Basin



Figure 27 Base Building



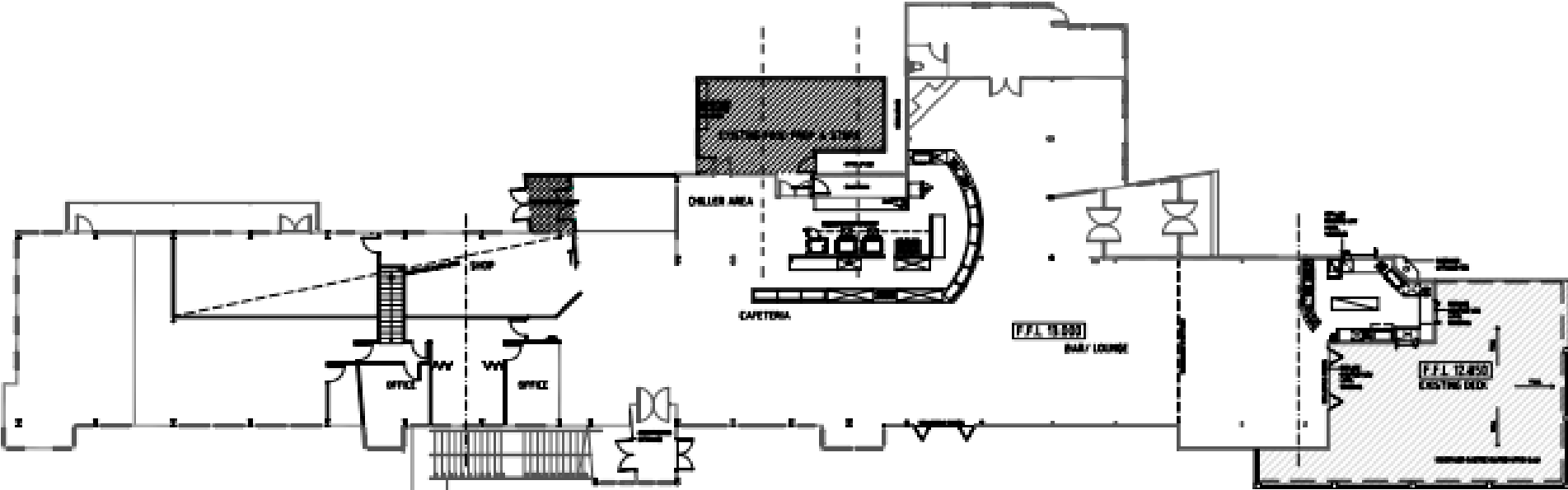
Figure 28 Base Building



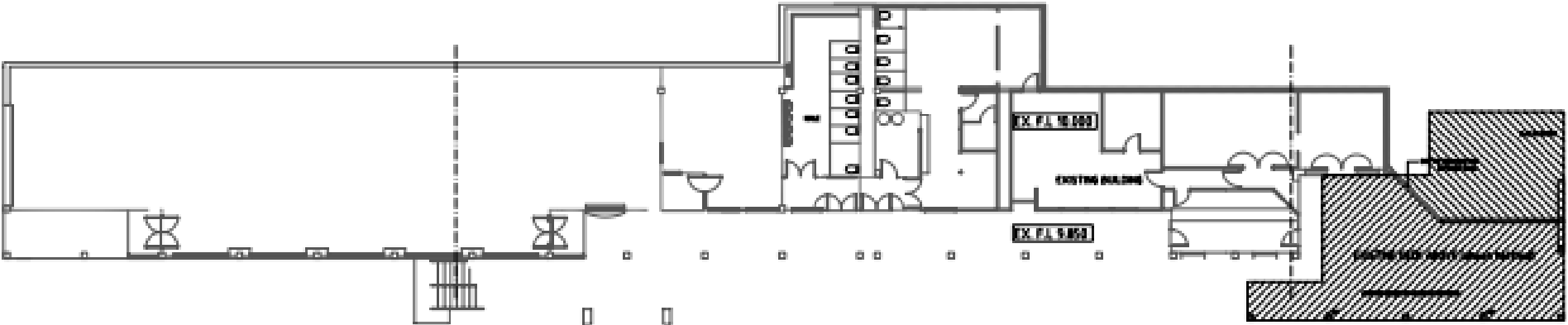
LPG Bottles



Figure 29 Base Building Plans



EXISTING UPPER FLOOR PLAN



EXISTING LOWER FLOOR PLAN

Figure 30 Picnic tables & Outdoor Patio



**Figure 31** Picnic tables & Outdoor Patio



Figure 32 Ski & Snow board racks



Figure 33 1260 Café and Day lockers

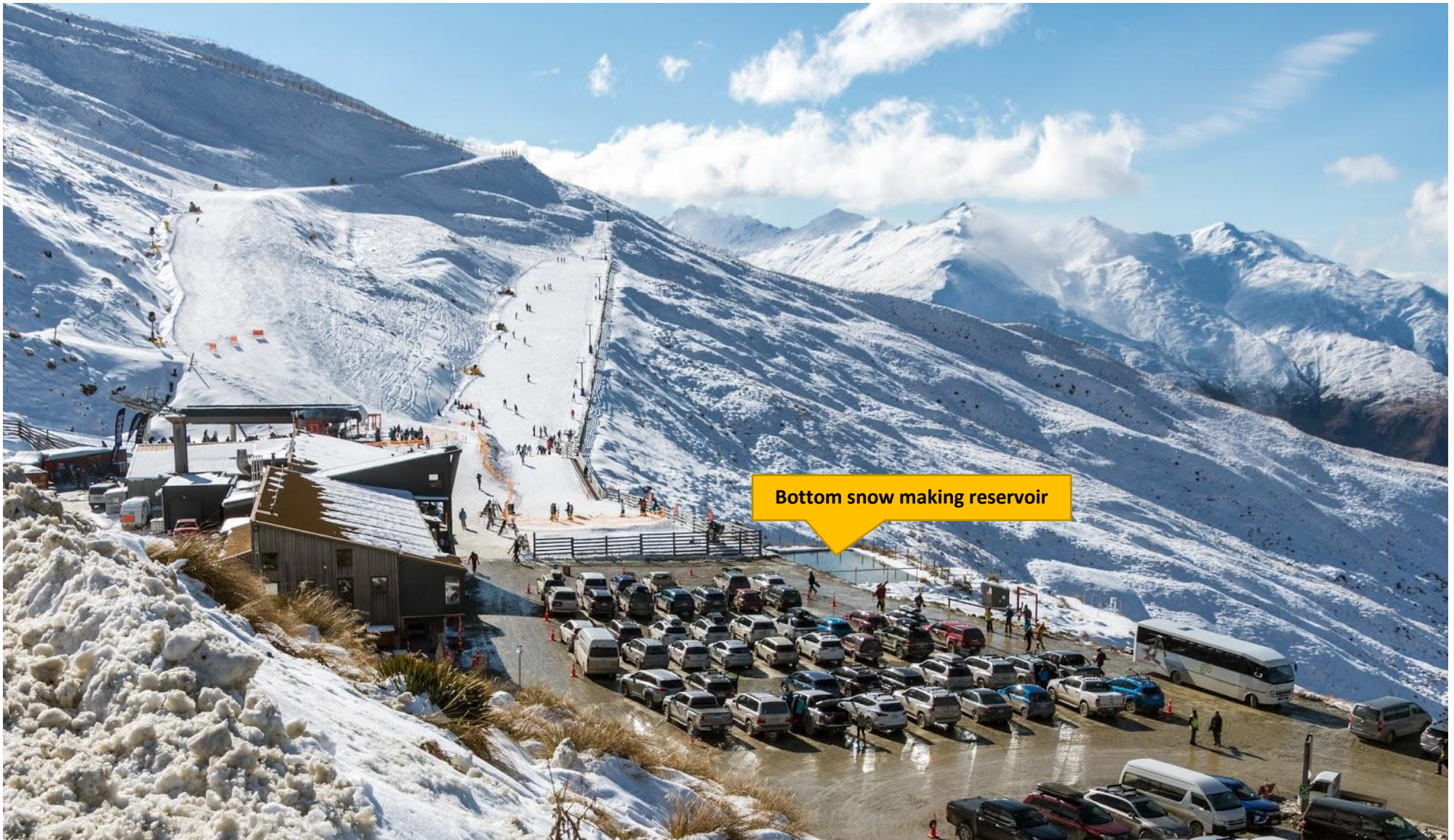


Figure 34 Wastewater Treatment Plant (incl pump shed)





Figure 36 Snow making Reservoir (bottom)





**Figure 37** Snow making Reservoir (bottom) incl Main Pump House



Figure 38 Snow making Reservoir (main)



Figure 39 Snow making reservoir (main)



Figure 40 - Learners Conveyor / Magic Carpet



Figure 41 Base of Platter Lift



Figure 42 Platter Lift



Figure 43 Express Lift – base incl operator shed plus 2x access control systems



Figure 44 Express Lift – pylons

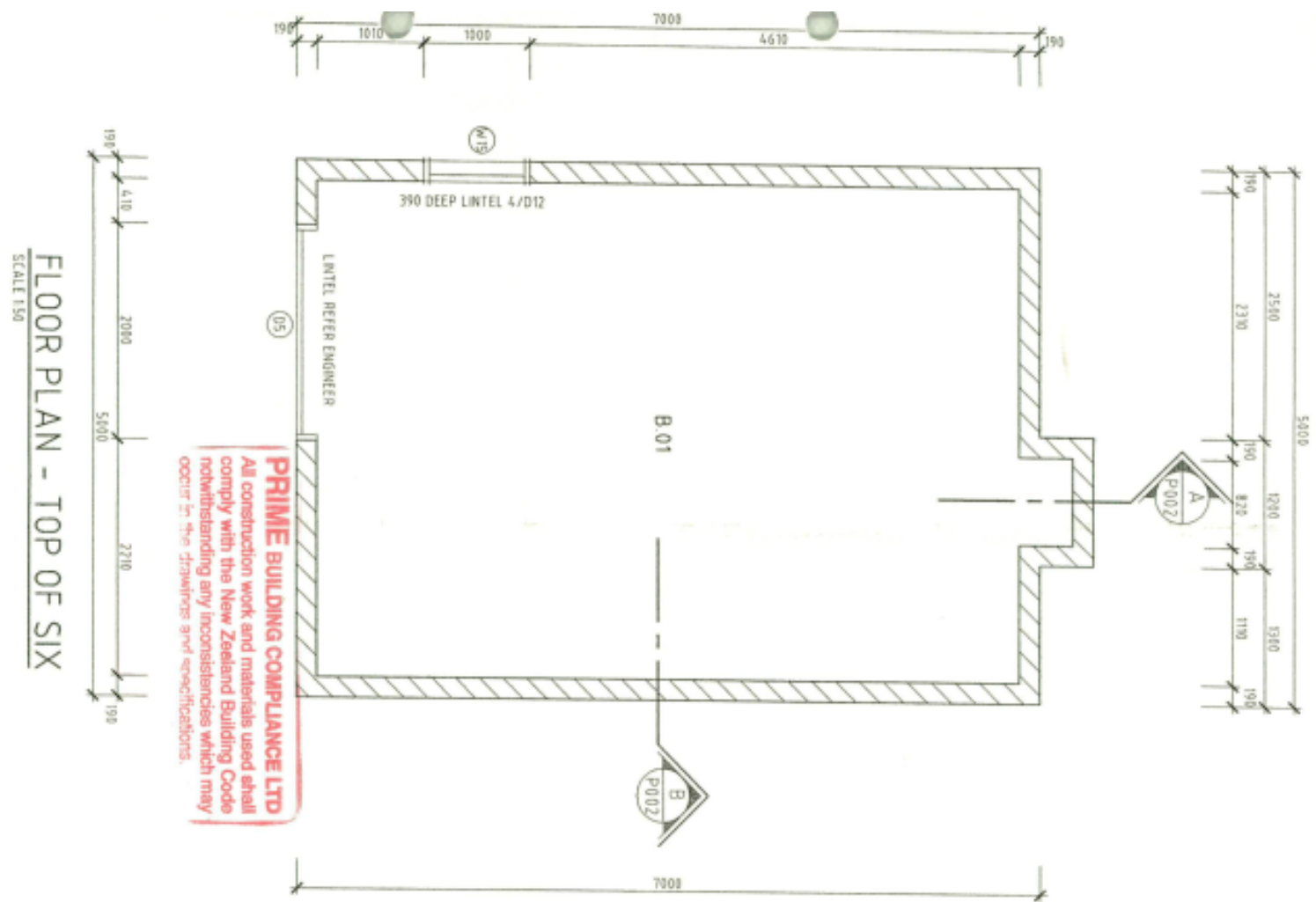




Figure 45 Top of six-seater express lift – Drive Station + Ski Patrol Cabin + Altitude Cafe



Figure 46 Floor plan of Ski Patrol Cabin



**Figure 47**      **Location of Old Day Lodge / Ski Patrol Classroom relative to top of Express Lift**



Figure 48 Old Day Lodge / Ski Patrol Classroom





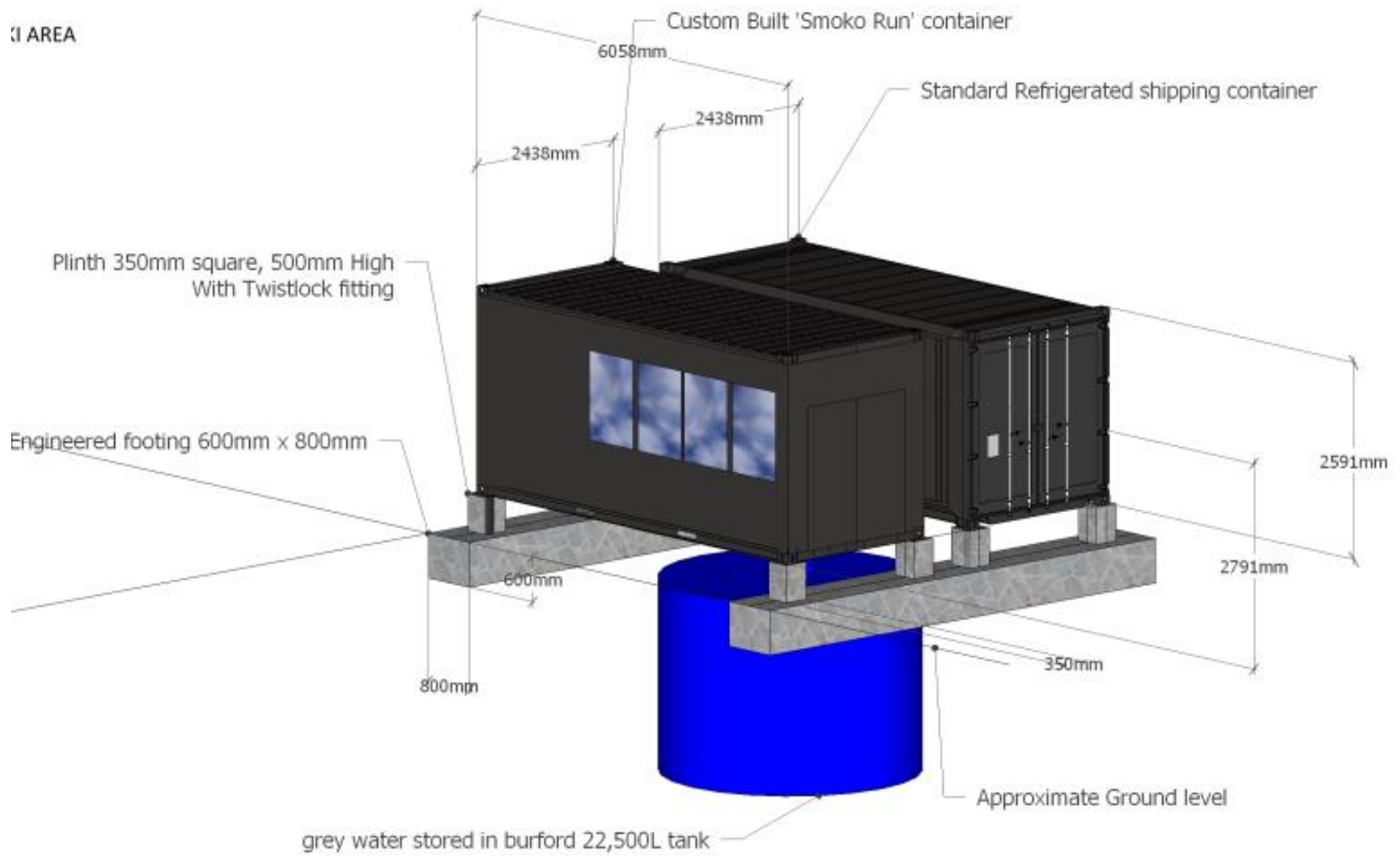
Figure 50 Location of Altitude Cafe



**Figure 51** Altitude Café with top of six -seater Express Lift in background



Figure 52 Altitude Cafe





**Figure 53** Old lift tow shed (Saddle) – (converted to a toilet block)



**Figure 54** Race Events Container Storage (Matukituki)



Figure 55 Mid Mountain Booster pump station



Figure 56 Base of Quad Lift



Figure 57 Base Quad lift operator hut



Figure 58 Lift Machinery Shed at Quad Base (drive)



Figure 59 Quad Chair Lift



Figure 60 Top of Quad lift – Return station, operator / patrol hut and small 'A' Frame Patrol Equipment Shed





Figure 61 Top of Quad lift – return station and operator / patrol hut



Figure 62 Small 'A' frame Patrol Equipment shed



Figure 63 Radio Aerial



Figure 64 Various trails



Figure 65 Aerial view of various trails



Figure 66 Snow Fences



Figure 67 Proposed Avalanche Protection Devices (Gazex)

