

Licence Application – Appendix III

Brief Description of Treble Cone Infrastructure

Figure #	Infrastructure / Building Name	Actual Footprint	Larger area required for use	Construction	Approx. Coordinates from Google Earth
1,2,3,	Carpark at base of Mountain	Approx. 7500 m ²	N/A	Gravel	44°38'33.35" S: 168°55'45.53" E to 44°38'35.01" S: 168°56'00.41" E
4,5,	Treble Cone Ski Field Access Road	Length approx. 7000 m from Wanaka Mount Aspiring Road to boundary of Motatapu Conservation Area	N/A	Gravel	44°38'33.09" S: 168°56'03.38" E to 44°38'33.39" S: 168°54'32.36" E
6	Access Road within Motatapu Conservation Area	Length approx. 2000 m from boundary	N/A	Gravel	44°38'01.27" S: 168°53'46.84" E to 44°38'33.39" S: 168°54'32.36" E
7	Gravel Hooper – halfway up access road	Approx. 35m ²	50m ²	Steel	44°38'06.09" S: 168°54'43'67" E
8	Location of Gravel Hooper				44°38'06.09" S: 168°54'43'67" E
9	View of top of access road, Home Basin and Easy Rider trail zig zagging up mountain				
10	Treble Cone Trail Map				
11	Aerial View of Home Basin & Saddle Basin				
12	Aerial View of Home Basin Express Lift				
13	Aerial View of Home Basin				

Licence Application – Appendix III

Brief Description of Treble Cone Infrastructure

Figure #	Infrastructure / Building Name	Actual Footprint	Larger area required for use	Construction	Approx. Coordinates from Google Earth
14	Southern Home Basin Carpark	Approx. 6,250 m ²	N/A	Gravel	44°38'01.95" S: 168°53'45.91" E to 44°38'05.87" S: 168°53'47.49" E
15	Top end (Northern End) of Car Park and Access Road	Approx. 1400 m ²	N/A	Gravel	44°37'59.95" S: 168°53'46.57" E to 44°38'06.00" S: 168°53'51.41" E
16	Upper Home Basin Carpark	Approx. 5,100 m ²	N/A	Gravel	44°37'59.38" S: 168°53'43.17" E to 44°38'04.43" S: 168°53'44.74" E
17	Base car parks & top of access road				
18, 19	Overview of Treble Cone Home Basin infrastructure				
20,21	Picnic Tables / outdoor patio	Approx. 120m ²		Paved with wooden tables	44°37'58.62" S: 168°53'44.89"
22	Ski & snow board racks	Approx. 60m ²		galvanized steel frames,	44°37'58.33" S: 168°53'45.13"
23	1260 café & Locker containers	Approx. 65 m ²	120m ²	Adapted 20 ft Steel containers Board & cedar batten cladding; and concrete foundations	44° 37'58.51" S: 168° 53'44.22" E
24	Learners Conveyor / Magic Carpet	Length 20 m (10m ²)		galvanized steel frame, rubber	44' 37' 58.04" S: 168 '53'47.01" E
25	Platter Lift base	3m ²	3m ²	Steel and alloy; concrete foundations	44°37'56.91" S: 168°53'47.65" E
26	Platter Lift	Length Approx. 350 metres	N/A	Steel tower and cable	44°37'56.91" S: 168°53'47.65" E to 44°37'47.91" S: 168°53'51.36" E
27	Base of Six-seater Express lift	24m ²	30m ²	Perspex, Alloy, Roof corrugated iron Exterior –board & cedar batten cladding Foundations- concrete	44°37'57.25" S: 168°53'45.41" E

Licence Application – Appendix III

Brief Description of Treble Cone Infrastructure

Figure #	Infrastructure / Building Name	Actual Footprint	Larger area required for use	Construction	Approx. Coordinates from Google Earth
28	Home Basin Express Lift	Length Approx. 1,130 metres	N/A	Steel tower and cable	44°37'57.25" S: 168°53'45.41" E to 44°37'44.65" S: 168°52'58.91" E
29	Top of Six-seater Express lift	176m ²	176m ²	Steel and alloy; Perspex, concrete foundations	44°37'44.65" S: 168°52'58.91" E
30	Old Day Lodge / Ski Patrol classroom	93.75 m ²	110m ²	Roof – corrugated iron Exterior – wooden cladding Foundations- concrete	44°37'52.46" S: 168°53'13.68" E
31,	Altitude Cafe	6.058 x 5.626 metres	60m ²	2x converted steel 20 ft container with board & cedar batten cladding; concrete foundations	44°37'42.27" S: 168°52'59.86" E
32	Altitude Café incl picnic tables		180m ²		
33	Old lift tow shed (Saddle) – currently used as storage (plus Portaloos)	48m ²	50m ²	Roof – corrugated iron Exterior –board and cedar batten cladding Foundations- concrete	44°38'06.94" S 168°53'03.90" E
34	Base of Quad lift	40m ²	45m ²	Roof – corrugated iron Exterior –board and cedar batten cladding Foundations- concrete	44°38'23.93" S: 168°53'03.04" E
35	Quad Lift	Length Approx. 950 metres	N/A	Steel towers and cable	44°38'23.93" S: 168°53'03.04" E to 44°38'11.33" S: 168°52'24.34" E
36	Top of Quad lift operator/patrol hut	72m ²	80m ²	Roof – corrugated iron Exterior – board & cedar	44°38'11.33" S: 168°52'24.34" E

Licence Application – Appendix III

Brief Description of Treble Cone Infrastructure

Figure #	Infrastructure / Building Name	Actual Footprint	Larger area required for use	Construction	Approx. Coordinates from Google Earth
				cladding Foundations- concrete	
37, 38	Various ski field tracks and trails	Length 25 to 30km	450ha	N/A	Various locations – refer trail map
39	Various 4WD service tracks across the mountain	15-20 km			
40	Snow Fences	In 10 to 20m in length sections, 1.8m high	3000m	Tantalized wooden deer fence posts with 6-7 horizontal planks (150 x 25mm) with gaps between them	Various locations
41	Avalanche Protection Devices (Gazex) Steel guns that launch gas to prestart avalanches http://www.tas.fr/en/products/18-produits-avalanches/535-gazex-gazflex-en	Not yet installed			
42, 43,	Snow Making				
44, 45,	Snow Grooming				
46, 47, 48, 49, 50,	Events				
51	Accessing up slopes				
52, 53, 54,	Ski Patrol				

Figure 1 Carpark at base of mountain

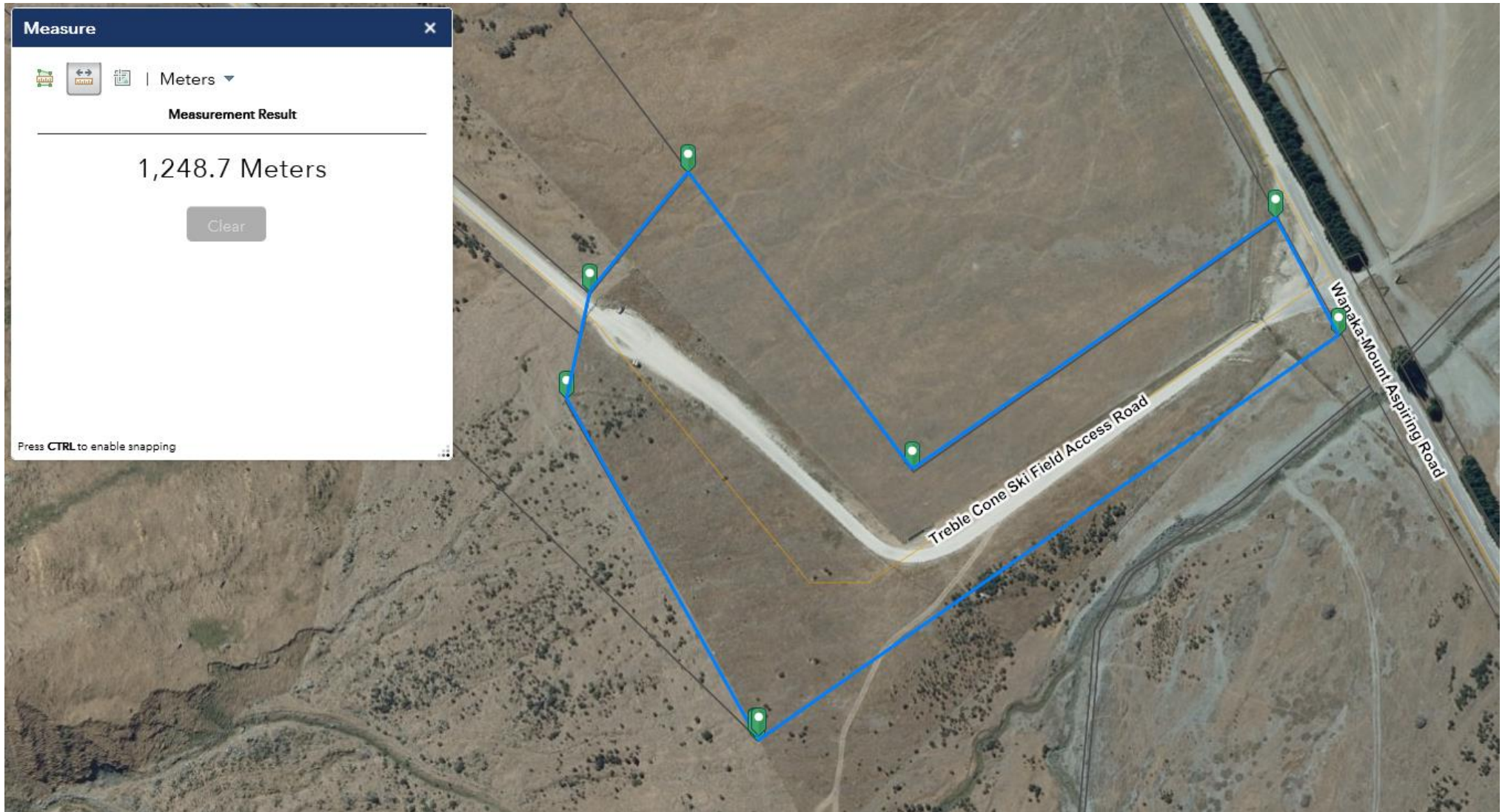


Figure 2 Carpark at base of mountain



Figure 3 Carpark at base of mountain



Figure 4 & 5 Treble Cone Access Road



Figure 6 Treble Cone Access Road within Motatapu Conservation Area



Figure 7 Gravel Hooper (incl Access Track)



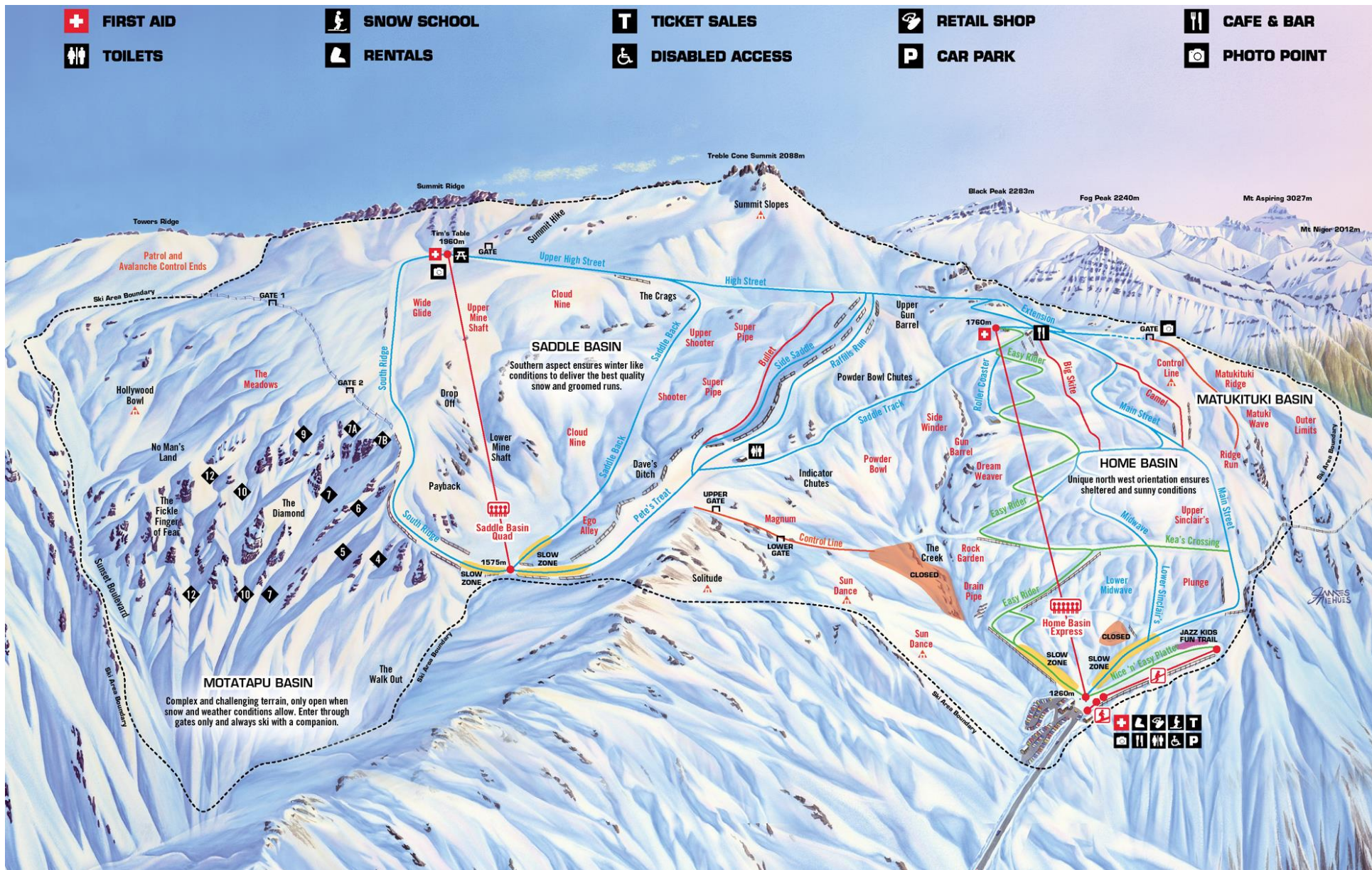
Figure 8 Site of Gravel Hooper



Figure 9 View of top of access road, Home Basin and Easy Rider trail zig zagging up mountain



Figure 10 Treble Cone Trail Map



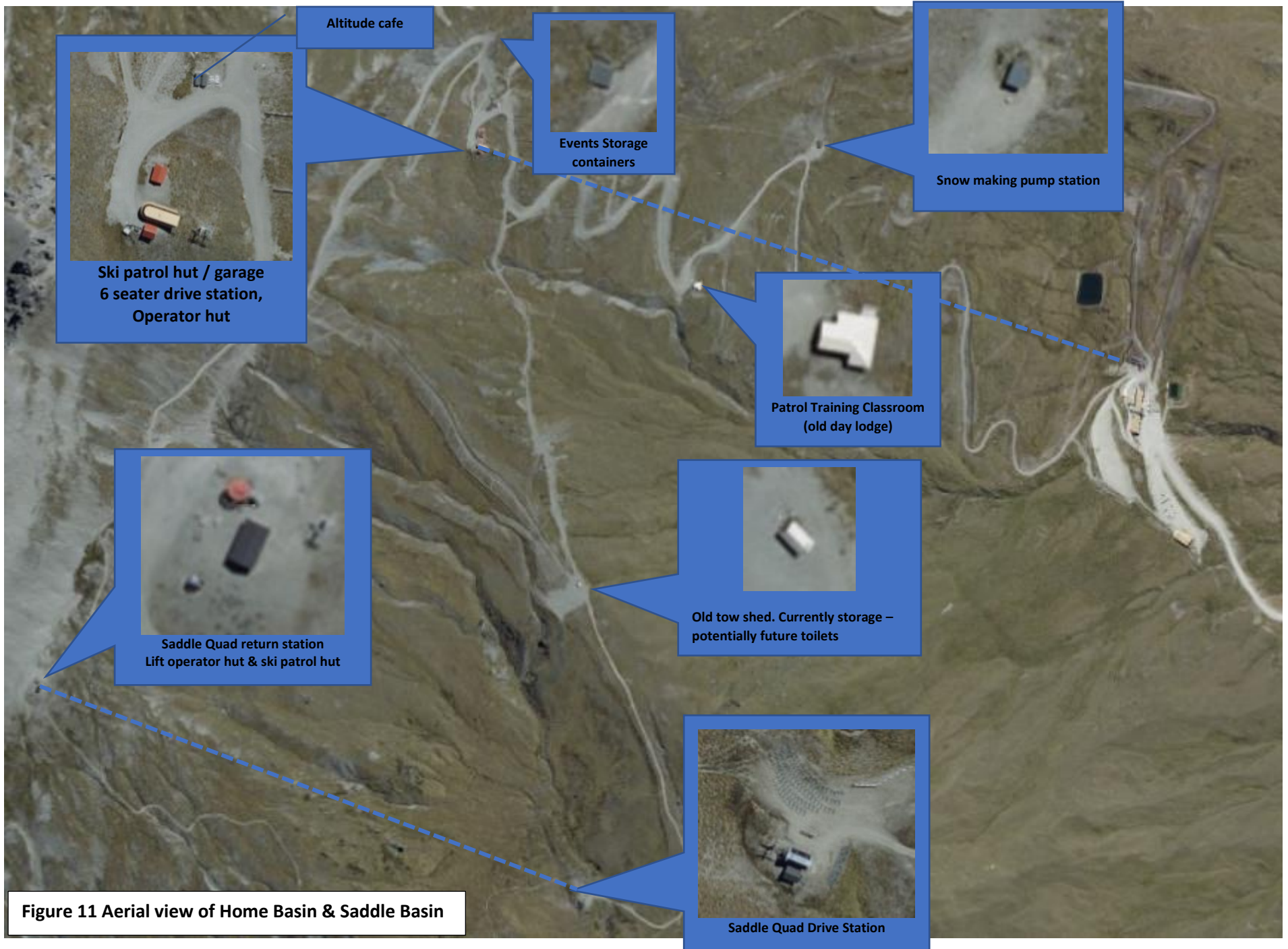


Figure 11 Aerial view of Home Basin & Saddle Basin



Figure 12 Aerial View of Home Basin Express Lift

Figure 13 Aerial View of Home Basin



Figure 14 Southern Basin Car Park – with snow groomer shed in the Distance



Figure 15 Top end (Northern End) of carpark with road up to Upper Car park on left



Figure 16 Upper Carpark



Figure 17 Base car parks & top of Access road.



Figure 18 Overview of Treble Cone Home Basin infrastructure – incl car parks



Figure 19 Overview of Treble Cone Home Basin infrastructure



Figure 20 Picnic tables & Outdoor Patio



Figure 21 Picnic tables & Outdoor Patio



Figure 22 Ski & Snow board racks



Figure 23 1260 Café and Day lockers



Figure 24 Learners Conveyor / Magic Carpet



Figure 25 Base of Platter Lift



Figure 26 Platter Lift



Figure 27 Express Lift – base incl operator shed plus 2x access control systems



Figure 28 Express Lift – pylons



Figure 29 Top of six-seater express lift – Drive Station + Ski Patrol Cabin + Altitude Cafe



Figure 30 **Location of Old Day Lodge / Ski Patrol Classroom relative to top of Express Lift**



Figure 31 Location of Altitude Cafe



Figure 32 Altitude Café including picnic tables with top of six -eater Express Lift in background



Figure 33 Old lift tow shed (Saddle) – (converted to a toilet block)



Figure 34 Base of Quad Lift



Figure 35 Quad Chair Lift



Figure 36 Top of Quad lift – Return station, operator / patrol hut and small 'A' Frame Patrol Equipment Shed



Figure 37 Various trails



Figure 38 Aerial view of various trails



Figure 39 – Example of the 4WD service tracks across the mountain



Figure 40 Snow Fences



Figure 41 Proposed Avalanche Protection Devices (Gazex)



Figure 42 Snow Making



Figure 43 **Snow Making**



Figure 44 Snow Grooming



Figure 45 Snow Grooming



Figure 46 Events



Figure 47 Events



Figure 48 Events



Figure 49 Events



Figure 50 Events



Figure 51 Accessing Upper Slopes



Figure 52 Ski Patrol



Figure 53 Ski Patrol



Figure 54 Ski Patrol

