



SOUTH ISLAND - WEST COAST

CHARLES SOUND TO DAGG SOUND

DEPTHS IN METRES
SCALE 1:60 000 (1:51 151)

MULTI-DAY TOUR ROUTES

Depth: In fathoms, metres, and feet. The depth soundings are given in metres. The depth soundings are given in metres. The depth soundings are given in metres.

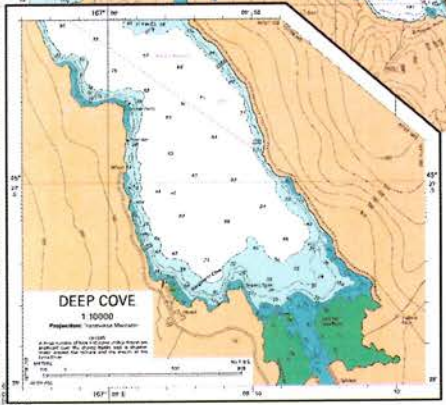
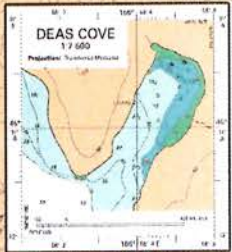
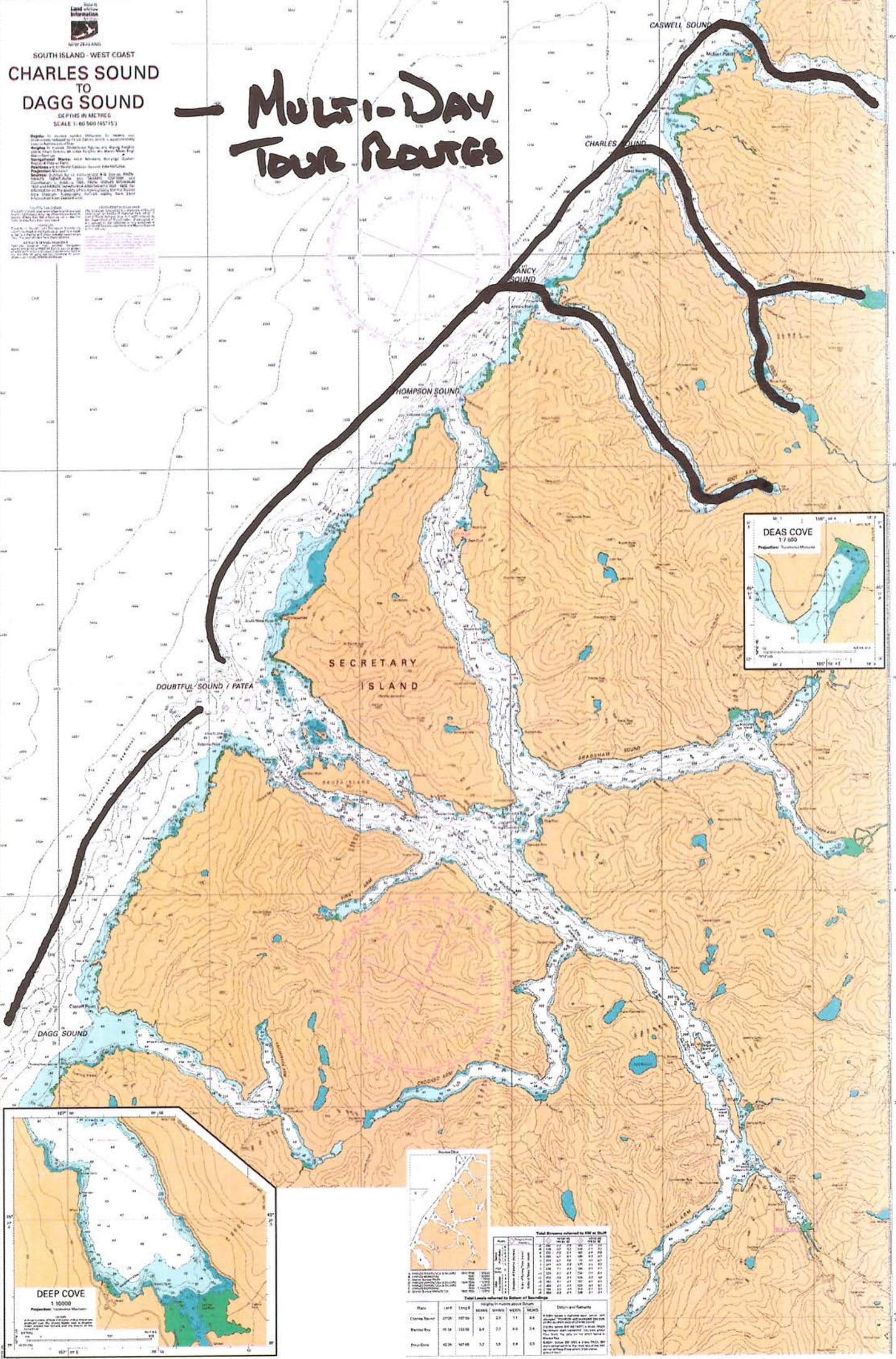
Navigation: The chart is intended for use by recreational and commercial vessels. It is not intended for use by military or government vessels.

Scale: The chart is on a Mercator projection. The scale is 1:60 000 (1:51 151).

Projection: The chart is on a Mercator projection. The scale is 1:60 000 (1:51 151).

Units: The chart uses the metric system. The scale is 1:60 000 (1:51 151).

Notes: The chart is intended for use by recreational and commercial vessels. It is not intended for use by military or government vessels.



Total Depths referred to Mean High Water

Chart Name	Lat	Long	Scale	Year	Notes
Chart 1	43° 50' S	172° 00' E	1:60 000	2010	
Chart 2	43° 50' S	172° 00' E	1:60 000	2010	
Chart 3	43° 50' S	172° 00' E	1:60 000	2010	
Chart 4	43° 50' S	172° 00' E	1:60 000	2010	
Chart 5	43° 50' S	172° 00' E	1:60 000	2010	
Chart 6	43° 50' S	172° 00' E	1:60 000	2010	
Chart 7	43° 50' S	172° 00' E	1:60 000	2010	
Chart 8	43° 50' S	172° 00' E	1:60 000	2010	
Chart 9	43° 50' S	172° 00' E	1:60 000	2010	
Chart 10	43° 50' S	172° 00' E	1:60 000	2010	

Total Depths referred to Mean Low Water

Chart Name	Lat	Long	Scale	Year	Notes
Chart 1	43° 50' S	172° 00' E	1:60 000	2010	
Chart 2	43° 50' S	172° 00' E	1:60 000	2010	
Chart 3	43° 50' S	172° 00' E	1:60 000	2010	
Chart 4	43° 50' S	172° 00' E	1:60 000	2010	
Chart 5	43° 50' S	172° 00' E	1:60 000	2010	
Chart 6	43° 50' S	172° 00' E	1:60 000	2010	
Chart 7	43° 50' S	172° 00' E	1:60 000	2010	
Chart 8	43° 50' S	172° 00' E	1:60 000	2010	
Chart 9	43° 50' S	172° 00' E	1:60 000	2010	
Chart 10	43° 50' S	172° 00' E	1:60 000	2010	

SOUTH ISLAND - WEST COAST
BREAKSEA AND DUSKY SOUNDS

Chart and Sounding Information

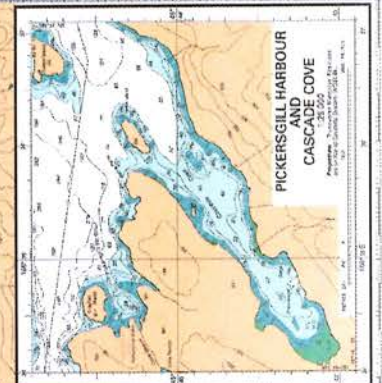
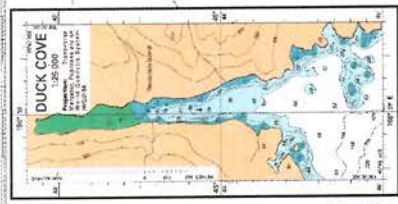
Scale: 1:50,000

Projection: Transverse Mercator

Datum: WGS 84

Units: Metres

Symbol	Meaning
(Solid black line)	Tour Routes
(Blue line)	Depth contours
(Orange area)	Land
(Blue area)	Water
(Green area)	Shoals
(Pink dashed line)	Navigation routes
(Red dots)	Light stations
(Black dots)	Other points of interest



Musi Dan
Tour Routes

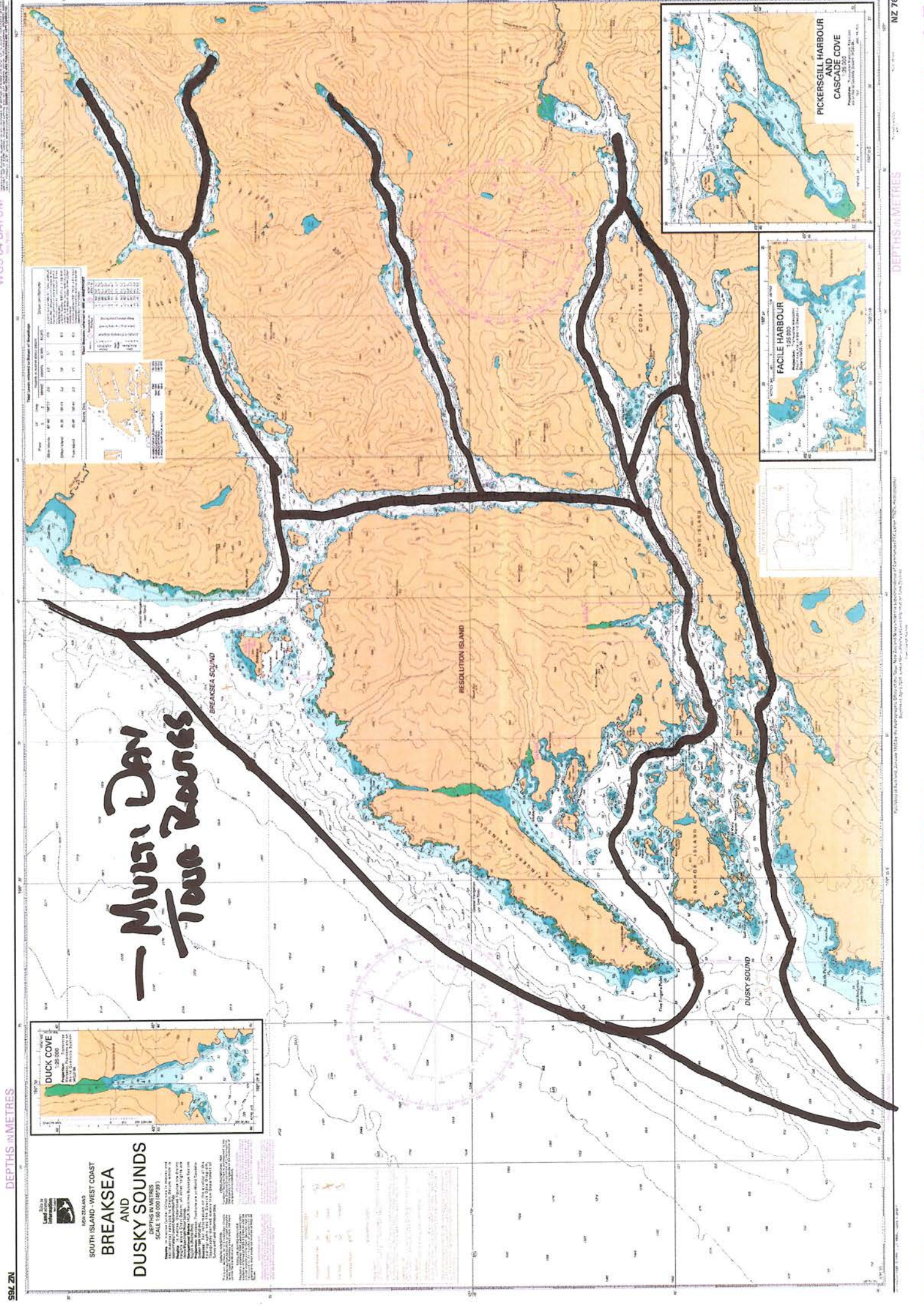


Chart and Sounding Information

Scale: 1:50,000

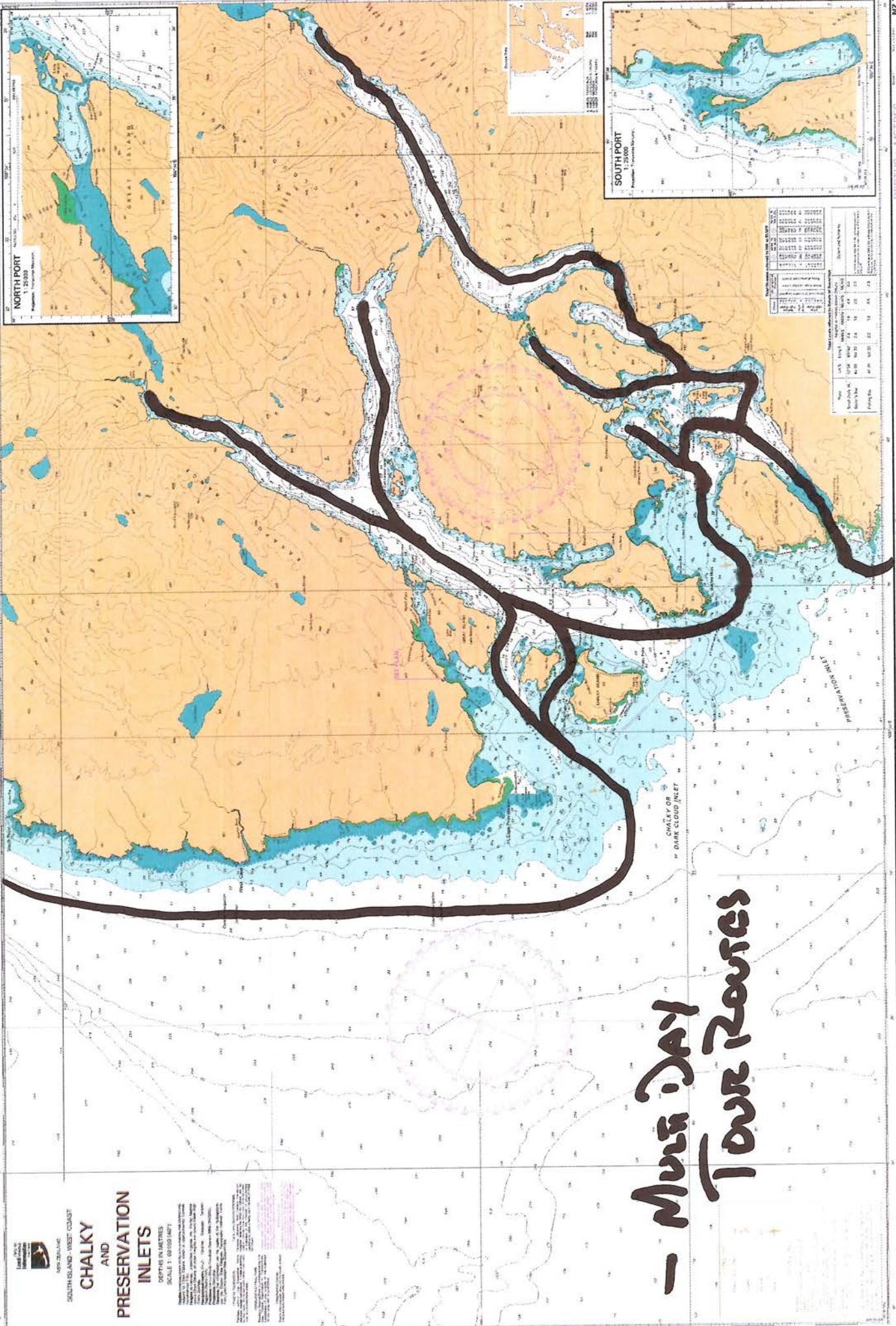
Projection: Transverse Mercator

Datum: WGS 84

Units: Metres

Symbol	Meaning
(Solid black line)	Tour Routes
(Blue line)	Depth contours
(Orange area)	Land
(Blue area)	Water
(Green area)	Shoals
(Pink dashed line)	Navigation routes
(Red dots)	Light stations
(Black dots)	Other points of interest

Copyright © Crown Copyright / NZ Hydrographic Office. All rights reserved. No part of this publication may be reproduced without the prior written permission of the Crown. This publication is subject to the Crown Copyright Act 1962 and the Copyright Act 1994. Printed by the Government Printer, Wellington, New Zealand.



- Multi Day Tour Routes

NEW ZEALAND
SOUTH ISLAND - WEST COAST
**CHALKY
AND
PRESERVATION
INLETS**
DEPTHS IN METRES
SCALE 1:50000 (MPT)

Copyright © Crown Copyright 2008, New Zealand Hydrographic Department. This chart is published under the authority of the Survey Act 1976. It is a reproduction of the original chart, which is the property of the Crown. All rights reserved. No part of this chart may be reproduced, stored in a retrieval system, or transmitted in any form or by any means, electronic, mechanical, photocopying, recording, or by any information storage and retrieval system, without the prior written permission of the Survey Act 1976. This chart is published under the authority of the Survey Act 1976. It is a reproduction of the original chart, which is the property of the Crown. All rights reserved. No part of this chart may be reproduced, stored in a retrieval system, or transmitted in any form or by any means, electronic, mechanical, photocopying, recording, or by any information storage and retrieval system, without the prior written permission of the Survey Act 1976.

PUBLISHED BY THE HYDROGRAPHIC DEPARTMENT, NEW ZEALAND, IN COMPLIANCE WITH THE SURVEY ACT 1976.