



CSD Plan - SO 432920

Survey Number SO 432920
Surveyor Reference unwin
Surveyor Patrick Ray Sole
Survey Firm Pat Sole Surveyors Ltd
Surveyor Declaration I Patrick Ray Sole, being a licensed cadastral surveyor, certify that:
 (a) this dataset provided by me and its related survey are accurate, correct and in accordance with the Cadastral Survey Act 2002 and the Rules for Cadastral Survey 2010, and
 (b) the survey was undertaken by me or under my personal direction.
 Declared on 18 May 2011 10:41 AM

Survey Details

Dataset Description AREAS 1 AND 2 OVER PART RESERVE 2652
Purpose Statutory Easement/Right
Status Approved as to Survey **Type** Survey
Land District Canterbury **Survey Class** Class B
Coordinate System Timaru 2000

Survey Dates

Surveyed Date 03/03/2010 **Certified Date** 18/05/2011
Submitted Date 18/05/2011 10:41:23 **Survey Approval Date** 26/05/2011
Deposit Date

Referenced Surveys

| Survey Number | Land District | Bearing Correction |
|---------------|---------------|--------------------|
| SO 14327 | Canterbury | 0°00'00" |
| SO 407066 | Canterbury | 0°00'00" |
| SO 9776 | Canterbury | 0°00'30" |
| SO 6752 | Canterbury | 0°00'00" |
| SO 9441 | Canterbury | 0°00'00" |
| SO 11357 | Canterbury | 0°00'00" |

Territorial Authorities

Mackenzie District

Created Parcels

| Parcels | Parcel Intent | Area | CT Reference |
|----------------------------------|----------------|------------------|--------------|
| Area 1 Survey Office Plan 432920 | Licence/Permit | 0.7236 Ha | |
| Area 2 Survey Office Plan 432920 | Licence/Permit | 0.5315 Ha | |
| Total Area | | 1.2551 Ha | |



Mark and Vector

Survey Number SO 432920
Coordinate System Timaru 2000

| From | To | Code | Bearing | Adpt Surv | Distance | Adpt Surv |
|-------------------|-------------------|------|------------|-----------|----------|-----------|
| UNWIN HUT | 8912 | ob0 | 96°23'18" | M | 893.50 | M |
| IT 13 SO 407066 | IT 8 SO 432920 | ob2 | 357°27'00" | M | 1,008.64 | M |
| IT 8 SO 432920 | IT I SO 9776 | ob5 | 346°43'40" | M | 266.63 | M |
| IT I SO 9776 | UNWIN HUT | ob6 | 319°47'40" | M | 312.68 | M |
| IT 13 SO 407066 | IT B SO 9776 | ob3 | 192°37'20" | M | 211.56 | M |
| UNWIN HUT | IT 1 SO 432920 | ob1 | 255°26'30" | M | 83.43 | M |
| IT 1 SO 432920 | IT 2 SO 432920 | ob9 | 332°49'20" | M | 78.65 | M |
| IT 2 SO 432920 | IT 3 SO 432920 | ob13 | 31°06'50" | M | 32.37 | M |
| IT 3 SO 432920 | IT IV SO 6752 | ob16 | 14°49'45" | M | 136.94 | M |
| IT IV SO 6752 | UNWIN HUT | ob19 | 162°45'00" | M | 218.93 | M |
| IT 3 SO 432920 | IT 4 SO 432920 | ob17 | 147°07'00" | M | 22.97 | M |
| IT 4 SO 432920 | IT 5 SO 432920 | ob21 | 112°19'30" | M | 40.27 | M |
| IT 5 SO 432920 | IT 6 SO 432920 | ob22 | 111°07'30" | M | 38.73 | M |
| IT 6 SO 432920 | UNWIN HUT | ob23 | 153°24'00" | M | 31.49 | M |
| IT 2 SO 432920 | IT 7 SO 432920 | ob14 | 135°39'40" | M | 39.72 | M |
| IT 7 SO 432920 | IT 5 SO 432920 | ob28 | 60°54'00" | M | 44.28 | M |
| IT IV SO 6752 | IT I SO 9441 | ob20 | 238°15'10" | M | 51.96 | M |
| IT 1 SO 432920 | IT XVIII SO 11357 | ob10 | 211°59'00" | M | 12.68 | M |
| IT I SO 9441 | PEG SO 9776 | ob30 | 213°41'30" | A SO 9776 | 5.13 | A SO 9776 |
| IT I SO 9776 | PEG SO 9776 | ob7 | 246°07'30" | A SO 9776 | 10.28 | A SO 9776 |
| IT 1 SO 432920 | POST 1B SO 432920 | ob11 | 29°55'30" | M | 31.27 | M |
| IT 1 SO 432920 | POST 1A SO 432920 | ob12 | 288°28'30" | M | 16.66 | M |
| IT 2 SO 432920 | POST 2A SO 432920 | ob15 | 290°59'30" | M | 30.41 | M |
| IT 3 SO 432920 | POST 3A SO 432920 | ob18 | 355°58'00" | M | 25.68 | M |
| IT 6 SO 432920 | POST 6B SO 432920 | ob24 | 269°29'00" | M | 19.88 | M |
| IT 6 SO 432920 | POST 6A SO 432920 | ob25 | 300°00'30" | M | 23.43 | M |
| IT 7 SO 432920 | POST 7A SO 432920 | ob29 | 97°13'30" | M | 40.83 | M |
| PEG SO 9776 | UNMK 6C SO 432920 | ob32 | 144°05'40" | A SO 9776 | 160.70 | C |
| UNMK 6C SO 432920 | UNMK 6D SO 432920 | ob40 | 144°05'40" | A SO 9776 | 19.10 | C |
| UNMK 6D SO 432920 | PEG SO 9776 | ob42 | 144°05'40" | A SO 9776 | 339.23 | C |
| UNMK 6C SO 432920 | POST 6A SO 432920 | ob41 | 246°01'00" | C | 18.27 | C |
| POST 6A SO 432920 | POST 3A SO 432920 | ob38 | 312°49'40" | C | 91.86 | C |
| POST 3A SO 432920 | POST 2A SO 432920 | ob36 | 225°35'10" | C | 60.64 | C |
| POST 2A SO 432920 | UNMK SO 432920 | ob35 | 147°18'10" | C | 16.19 | C |
| UNMK SO 432920 | UNMK SO 432920 | ob43 | 147°18'10" | C | 10.15 | C |
| UNMK SO 432920 | POST 1A SO 432920 | ob45 | 147°18'10" | C | 63.47 | C |
| POST 1A SO 432920 | POST 1B SO 432920 | ob34 | 55°12'10" | C | 38.24 | C |

Mark and Vector

Survey Number SO 432920
Coordinate System Timaru 2000

| From | To | Code | Bearing | Adpt Surv | Distance | Adpt Surv |
|-------------------|-------------------|------|------------|------------|----------|------------|
| POST 1B SO 432920 | POST 7A SO 432920 | ob33 | 60°53'30" | C | 19.16 | C |
| POST 7A SO 432920 | POST 6B SO 432920 | ob39 | 49°02'30" | C | 19.11 | C |
| POST 6B SO 432920 | UNMK 6D SO 432920 | ob37 | 82°01'30" | C | 27.75 | C |
| IT 6 SO 432920 | UNMK 6D SO 432920 | ob26 | 64°13'00" | C | 8.44 | C |
| IT 6 SO 432920 | UNMK 6C SO 432920 | ob27 | 349°21'00" | C | 19.48 | C |
| UNMK SO 432920 | UNMK SO 432920 | ob44 | 247°17'10" | C | 181.53 | C |
| UNMK SO 432920 | UNMK SO 432920 | ob46 | 258°38'30" | C | 54.94 | C |
| UNMK SO 432920 | UNMK SO 432920 | ob47 | 265°22'55" | C | 133.77 | C |
| UNMK SO 432920 | UNMK SO 432920 | ob48 | 317°47'00" | C | 16.63 | C |
| UNMK SO 432920 | UNMK SO 432920 | ob49 | 261°51'00" | C | 29.11 | C |
| UNMK SO 432920 | UNMK SO 432920 | ob50 | 250°17'40" | C | 70.71 | C |
| UNMK SO 432920 | UNMK SO 432920 | ob51 | 232°07'40" | C | 45.41 | C |
| UNMK SO 432920 | UNMK SO 432920 | ob52 | 142°07'40" | C | 10.00 | C |
| UNMK SO 432920 | UNMK SO 432920 | ob53 | 52°07'40" | C | 43.81 | C |
| UNMK SO 432920 | UNMK SO 432920 | ob54 | 70°17'40" | C | 68.10 | C |
| UNMK SO 432920 | UNMK SO 432920 | ob55 | 81°51'00" | C | 22.78 | C |
| UNMK SO 432920 | UNMK SO 432920 | ob56 | 137°47'00" | C | 16.24 | C |
| UNMK SO 432920 | UNMK SO 432920 | ob57 | 85°22'55" | C | 139.28 | C |
| UNMK SO 432920 | UNMK SO 432920 | ob58 | 78°38'30" | C | 56.53 | C |
| UNMK SO 432920 | UNMK SO 432920 | ob59 | 67°17'10" | C | 184.28 | C |
| IT 13 SO 407066 | 8912 | ob4 | 22°24'40" | M | 1,521.44 | M |
| IT XVIII SO 11357 | 8912 | ob31 | 93°58'05" | A SO 14327 | 977.85 | A SO 14327 |
| IT I SO 9776 | IT II SO 9776 | ob8 | 168°08'30" | A SO 9776 | 166.47 | A SO 9776 |
| IT II SO 9776 | IT B SO 9776 | ob60 | 178°52'51" | A SO 9776 | 1,310.75 | A SO 9776 |

| Mark Name | Description |
|-----------------|-------------------|
| 8912 | IT in conc, flush |
| IT 1 SO 432920 | d0.1 |
| IT 13 SO 407066 | Up 0.03 on mound |
| IT 2 SO 432920 | d0.2 |
| IT 3 SO 432920 | d0.1 |
| IT 4 SO 432920 | d0.1 |
| IT 5 SO 432920 | flush |
| IT 6 SO 432920 | flush |
| IT 7 SO 432920 | d0.15 |

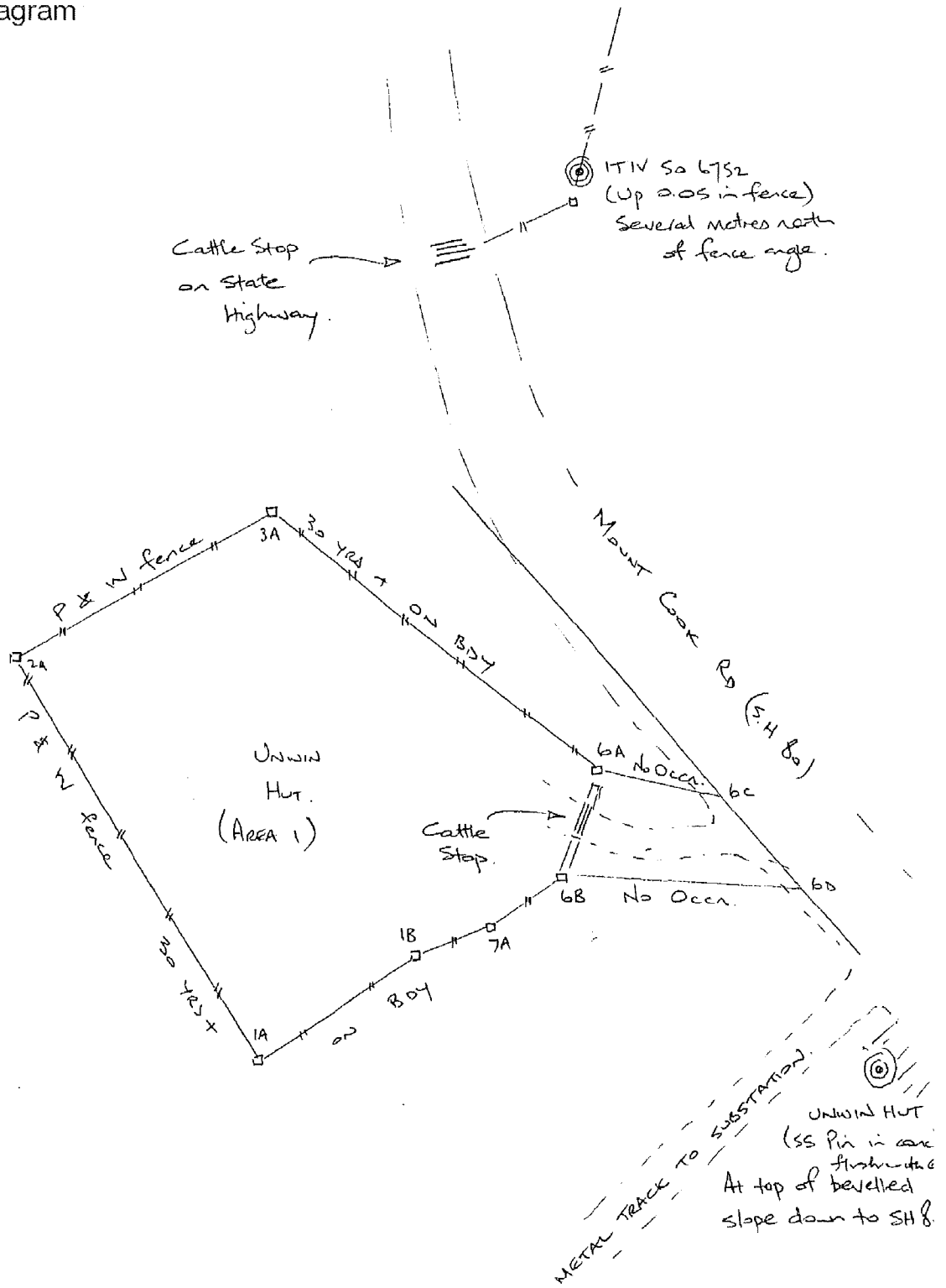
Mark and Vector

Survey Number SO 432920
Coordinate System Timaru 2000

| Mark Name | Description |
|-------------------|------------------|
| IT 8 SO 432920 | flush |
| IT B SO 9776 | IT in conc |
| IT I SO 9441 | d0.2 in metal |
| IT I SO 9776 | d0.1 |
| IT IV SO 6752 | Up 0.05 in fence |
| IT XVIII SO 11357 | In Conc |
| UNWIN HUT | SS Pin in Conc |

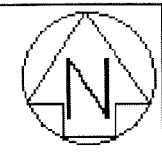
*** End of Report ***

Occupation Diagram



OCCUPATION DIAGRAM

NOT TO SCALE



Diag. A

Diag. AA

Area 1

Area 2

Part RES 2652

RS 39835

Part RES 2652

Diag. AAA

Part RES 2652

RS 39834

Part RES 2652

Area 1

Part RES 2652

Area 2

Part RES 2652

ORIGIN OF LEVELS - IT XVIII SO 11357 as Shown on SO 14327.
HEIGHT DATUM: MSL LYTELTON.

S1/1

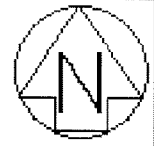
Land District: Canterbury
Digitally Generated Plan
Generated on: 26/05/2011 3:24pm Page 6 of 7

AREAS 1 AND 2 OVER PART RESERVE 2652

Surveyor: Patrick Ray Sole
Firm: Pat Sole Surveyors Ltd
Survey Date: 3/03/2010

CSD Plan
SO 432920
Approved on: 26/05/2011

Non Primary

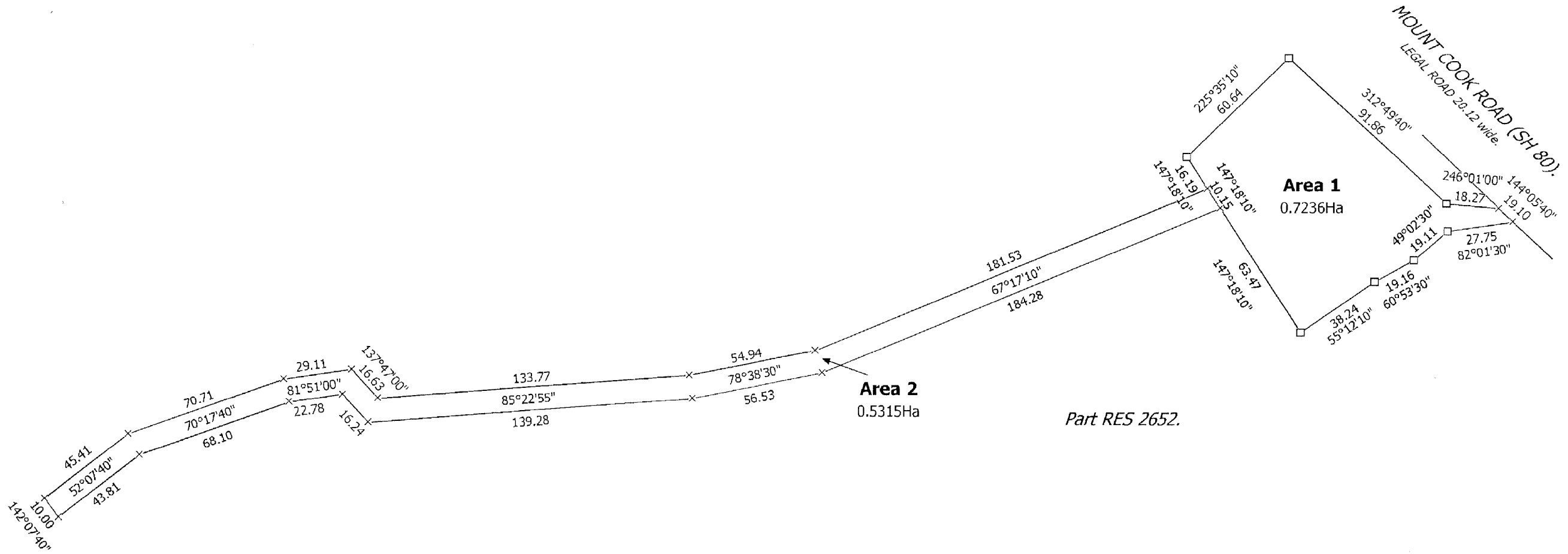


MOUNT COOK ROAD (SH 80)
LEGAL ROAD 20.12 wide

Area 1
0.7236Ha

Area 2
0.5315Ha

Part RES 2652.



T 1/1

| | | | |
|--|---|--|--|
| Land District: Canterbury Digitally Generated Plan Generated on: 26/05/2011 3:24pm Page 7 of 7 | AREAS 1 AND 2 OVER PART RESERVE 2652 | Surveyor: Patrick Ray Sole Firm: Pat Sole Surveyors Ltd Survey Date: 3/03/2010 | CSD Plan SO 432920 Approved on: 26/05/2011 |
|--|---|--|--|